

July/August

ACCESS CONTROL 2015

TRENDS & TECHNOLOGY

Supplement to
*Locksmith Ledger
International, Security
Dealer & Integrator,
Security Technology
Executive*

www.LocksmithLedger.com

www.SecurityInfoWatch.com

CLOUDY with a chance of ACCESS CONTROL



ACCESS
CONTROL
THAT SAVES
YOU TIME



AVIGILON™ See Page 5

ELECTRIFIED LOCKING SOLUTIONS. EVERY DAY, EVERY WAY.



Our inventory of ASSA ABLOY access control and door hardware products is unmatched in the industry. Trying to decide on the right solution? Our technical sales team is highly experienced with access control technology and can offer valuable advice and recommendations.



INFORMED. IN STOCK. IN DEPTH.



seclock.com | 800-847-5625

Request information: www.SecurityInfoWatch.com/10215009

THE NEW FIRE RATED SOLUTION FOR RIM PANIC EXIT DEVICES

WE RE-ENGINEERED OUR 4800 & MADE IT BETTER
TAKE THE GUESS WORK OUT OF PRODUCT SELECTION

A FIRE RATED ELECTRIC STRIKE AT A NON-FIRE RATED PRICE*
FIRE RATED FOR FREE



4800F

A GAME CHANGER

*When compared to the list price of a H.E.S.® 9600

IN STOCK AND READY TO SHIP:



Request information: www.SecurityInfoWatch.com/10215438

ACCESS CONTROL 2015

JULY/AUGUST

TRENDS & TECHNOLOGY

CYGNUS BUSINESS MEDIA
ACCESS CONTROL TRENDS & TECHNOLOGY 2015
 Cygnus Business Media at 3030 W Salt Creek Ln, Arlington Heights, IL 60005. Phone: 847-454-2700, Fax: (847) 454-2759 • (847) 454-2700 and is a supplement to Locksmith Ledger, Security Dealer & Integrator and Security Technology Executive magazines.

PUBLISHER
 Group Publisher.....Nancy Levenson-Brokamp
nancy.brokamp@cygnus.com

EDITORIAL
 Editorial Director..... Steve Lasky
 Editor, *Security Dealer & Integrator*..... Paul Rothman
 Editor, *Locksmith Ledger*..... Gale Johnson
 Editor, *SecurityInfoWatch.com*..... Joel Griffin

ART & PRODUCTION
 Art Director..... Kayla Burger
 Production Manager..... Jane Pothlanski

SALES CONTACTS
 East Coast Sales, SD&I, STE, SIW.com.....Janice Welch
janice.welch@cygnus.com

West Coast Sales, SD&I, STE, SIW.com.....Bobbie Ferraro
bobbie.ferraro@cygnus.com

Midwest Sales, SD&I, STE, SIW.com, Locksmith Ledger, LocksmithLedger.com.....Brian Lowy
brian.lowy@cygnus.com

Display/Classified Sales, SD&I, STE, SIW.com, SD&I, STE, SIW.com, Locksmith Ledger, LocksmithLedger.com.....Kristy Dziukala
kristy.dziukala@cygnus.com

List Rental.....Elizabeth Jackson
ejackson@meritdirect.com

SUBSCRIPTIONS CUSTOMER SERVICE
 Toll-Free (877) 382-9187; Local (847) 559-7598
 Email: Circ.SecDealer@omeda.com

REPRINTS
 To purchase article reprints please contact Brett Petillo at Wright's Media:
 877-652-5295 ext. 118 or bpetillo@wrightsmedia.com

CYGNUS BUSINESS MEDIA
 CEO..... Paul Bonaiuto
 CFO..... Ed Tearman
 President..... Chris Ferrell
 EVP Public Safety & Security..... Scott Bieda
 VP Events, Public Safety & Security..... Ed Nichols
 VP Production Operations..... Curt Pordes
 VP Audience Development..... Sharon Haberkorn
 VP Human Resources..... Ed Wood

ADVERTISER'S INDEX

| Company Name | Page # | Request more info at |
|--------------------------------|--------|--|
| Access Hardware Supply | S24 | www.securityinfowatch.com/10722906 |
| ASSA Abloy | S32 | www.securityinfowatch.com/10212899 |
| Avigilon | S1,S5 | www.securityinfowatch.com/10215735 |
| Continental Access | S11 | www.securityinfowatch.com/10213301 |
| DKS Door King Systems | S15 | www.securityinfowatch.com/10213482 |
| DSX Access Control Systems | S31 | www.securityinfowatch.com/10214208 |
| Farpointe Data | S9 | www.securityinfowatch.com/10215927 |
| JLM Wholesale | S27 | www.securityinfowatch.com/10214128 |
| Keyscan Inc. | S21 | www.securityinfowatch.com/10214172 |
| Marks USA | S23 | www.securityinfowatch.com/10214311 |
| Mercury Security Corp | S13 | www.securityinfowatch.com/10214361 |
| Morse Watchmans | S25 | www.securityinfowatch.com/10214428 |
| NVT/Network Video Technologies | 3 | www.securityinfowatch.com/10214493 |
| Paxton Access | S17 | www.securityinfowatch.com/10215750 |
| SDC-Security Door Controls | S19 | www.securityinfowatch.com/10214991 |
| Secured Cities | S29 | www.securityinfowatch.com/10752984 |
| Security Lock Distributors | S2 | www.securityinfowatch.com/10215009 |
| Southern Lock & Supply Co. | S20 | www.securityinfowatch.com/10215166 |
| Trine Access | S3 | www.securityinfowatch.com/10215438 |

Visit Cygnus Security Media on the Web at www.SecurityInfoWatch.com

COVER STORY

6 How Standards and Technology are Shaping Access Control

By Steve Lasky

Converged responsibilities, network security, authentication set the tone for advancements

FEATURES

16 Managing access control goes "remote"

Remote management is cost-efficient, expands services and adds client convenience1

18 Wireless Access Control has Head End in the Clouds

By Gale Johnson

Salto Systems advances traditional door technology to new heights

22 Luxury Resort Community Goes High Tech

By Fernando Pires

Morse Watchman's' key management system decreases liability

NEW PRODUCTS

27 The Latest Access Control Technologies



Avigilon Access Control Manager helps keep your people, property and assets safe with an easy-to-use system that puts time back on your side.

ACCESS CONTROL THAT SAVES YOU TIME.

AVIGILON™

Learn how to save time at avigilon.com/ACM

Request information: www.SecurityInfoWatch.com/10215735

by Steve Lasky

HOW Standards and Technology are Shaping Access Control



Developments in converged back-of-house technologies are enabling strong authentication and card management capabilities for computer and network logon while also ensuring that physical and logical identities can be managed on a combination of plastic cards, smartphones and other mobile devices.

Image Courtesy of BigStock.com

Converged responsibilities, network security, authentication set the tone for advancements

Security Technology Executive editorial director Steve Lasky recently sat down with several of the industry's top experts to find out what was trending and what issues were shaping the future of access control technology. Here is what they had to say:

STE: Like IP overtaking analog in the video sectors, how will traditional

mechanical access control co-exist with new and emerging electronic and wireless access control advancements?

Jason Ouellette: In today's market, brand new systems are more commonly being specified as full IP systems with the support of an electronic credential. There are a large number of legacy installations presently in use and once they reach the end of their 10-20 year life cycles in the access control industry, fully IP security



Peter Borskin is Director of Electronic Access Control for ASSA ABLOY.



David Ella, Vice President of Product Marketing, AMAG Terchnology

systems will likely replace them with cloud based options and electronic credentials. So while serial communications currently accounts for roughly 60 percent of access control sales, IP will eventually eclipse serial based sales as these legacy systems are replaced and become antiquated."

Julian Lovelock: With the adoption of mobile access control, cards and phones are already converging into centralized identity management systems. The ultimate objective goes beyond supporting both form factors, though. Even more valuable is the ability to use either form factor -- or both -- to secure access to the door, to data, and to cloud applications, while providing a seamless user experience. Developments in converged back-of-house technologies are enabling strong authentication and card management capabilities for computer and network logon while also ensuring that physical and logical identities can be managed on a combination of plastic cards, smartphones and other mobile devices.

Peter Boriskin: Historically, electromechanical devices were simply mechanical devices with solenoids or other basic electronic components incorporated into them. Recently we have seen significant advances in the capabilities of electromechanical devices with products like ASSA ABLOY's EcoFlex electrified mortise locks. Built on the same foundation, they share common aesthetics and security features with our mechanical locks, allowing them to co-exist seamlessly in the same facility. Additionally, improvements in the technology

of electromechanical hardware has allowed us to merge electromechanical hardware with innovations like low power wireless. By combining these ideas, we are able to create much more advanced products without compromising security.

David Ella: For applications with a lower need than 100% online availability such as dorm rooms at universities, we are finding an increased demand in wireless locks. Access control products are integrating with wireless lock products to meet the diverse demands of customers who need both technologies to effectively secure buildings.

Ajay Jain: When 'IP only' video devices emerged, hybrid systems appeared that could handle both analog and IP devices. Initially seen as a transitional stopgap, it looks now that hybrid systems will stick around -- there are even new analog cameras being introduced for some applications. In a similar way, access control technologies and systems that can connect legacy and modern systems will see quick growth. Some applications will transition to emerging technologies, and some will remain a hybrid of old and new for some time. Management systems will need to support both.

John Szczygiel: Electronic and wireless access controls will compliment and extend the traditional metal key but not replace them for quite a while. The newer technologies will enable more openings to become part of the automated access control systems. The exciting trend here is towards ultra-low power wireless devices. The extended battery life of these devices will make



Jason Ouellette is the product line director for the access control brands of Tyco Security Products.

(Photo courtesy Tyco Security Products)



Ajay Jain is president and CEO of Quantum Secure.

(Photo courtesy Quantum Secure)



John Szczygiel, EVP and COO of Brivo.



Mitchell Kane is President of Vanderbilt Industries.

many more applications in physical security very practical.

Mitchell Kane: Delivering the best solutions for our end-users will necessitate embracing new technologies and supporting the expanded functionality/utility that these new technologies offer. To be successful, we must adapt our software to accept the integration of new devices all the while maintaining a logical user interface. From an end user's perspective, this means keeping the programming of disparate devices constant with core products, the only real distinction should be how and when data is updated at the remote devices. The trend of co-existence between traditional mechanical access control and emerging electronic and wireless access control is all about consistency among these technologies across multiple systems, allowing users to streamline installation, service and maintenance, and easily expand their access control network when needed.

STE: Are the increased standards pressures by organizations like PSIA and ONVIF realistically migrating the access control industry to a true open architecture IP-based intelligent controller environment? If so, how is your technology roadmap designed for future adopters?

Jason Ouellette: Our roadmap has always been focused on adopting these standards, where they make sense, to ensure that our products have the ability to talk to readers from multiple solution providers. This quite simply protects the customer's investment which we fully take note of. OSDP is one of the more aggressive

open standards that we see moving into the industry, addressing communication between the reader and controllers and can support both legacy serial based communications as well as the newer IP based solutions. Tyco Security Products has also recently participated in a PSIA demonstration of the PLAI Agent, showing how an Active Directory LDAP based logical identity can drive a physical credential across mul-

The trend of co-existence between traditional mechanical access control and emerging electronic and wireless access control is all about consistency among these technologies across multiple systems...

iple physical access control system (PACS) providers We are well in tune to the need for convergence of logical and physical identity management. It will be difficult to see a fast and widespread adoption in access control though until more legacy systems are replaced with IP based solutions. Until then, there will be certain limits on how much standardization can occur. Reconciling these competing technologies will inevitably change the direction of the access control market and will really spur the further development of access control standards.

Peter Boriskin: We sit on the boards of both PSIA and ONVIF. We take standards very seriously and value being part of these organizations. Standardization is important in the security industry and we design our products to be integrated into a standards-based eco-system. I think there is a level of caution from those in the security industry around these standards, especially how we develop proper testing and ensuring the standards are comprehensive. Addressing these two areas will be critical moving forward.

Scott Lindley: Standards have long played a role in access control and will continue to build momentum. For example, to enable broader compatibility with a broader range of access control panels, many RFID readers and credentials first emulated magnetic stripe data standards developed by the International Organization for Standardization (ISO). These standards defined many of the reader and card attributes, such as data formats, timing and physical size. Today, many access control panel providers comply with the Institute of Electrical and Electronics Engineers (IEEE) standard IEEE 802.3 which defines the backbone of open architecture Ethernet technologies. New standards, such as the Open Supervised Device Protocol (OSDP) specification which offers the promise of widespread functional integration of disparate card readers, access control panels and other security management systems, will allow for new features and even greater interoperability.

Frank Gasztonyi: The notion that there can be an open architecture, IP-based intelligent controller that is based on



Ideal applications include:

- Public housing
- Schools and universities
- Correctional facilities
- Inner-city environments
- Hospitals and healthcare facilities
- Factories and receiving docks

RUGGED READERS FOR ACCESS CONTROL

Even in Extreme Conditions

The quality, durability and reliability of Farpointe's Guardian™ and Gibraltar™ Series vandal- and bullet-resistant readers translate into significant financial advantages. In situations that may damage conventional readers, rugged Guardian and Gibraltar Series readers keep performing. As a result, end users eliminate costly repairs or replacements, while integrators avoid nuisance service calls. The bottom-line results are compelling: lower total cost of ownership (TCO) and greater return on investment (ROI) over the lifespan of access control systems.

Benefits:

- Vandal- and impact-resistant designs;
- Install indoors or out;
- Broad support for the most popular proximity and contactless smartcard technologies;
- Backed by limited lifetime warranties;
- From the global partner of choice.

Call +1-408-731-8700 to speak to a Farpointe representative, or visit www.farpointedata.com to learn more about Farpointe's line of rugged readers.



Scott Lindley,
President, Farpointe
Data, a DORMA
Group Company.



Frank Gasztonyi
is President of
Mercury Systems.



Robert Laughlin,
President, Galaxy
Control Systems.

PSIA, ONVIF, or any other standards body is misguided. This is due to the fact that "intelligent controllers" deliver constantly evolving solutions to diverse problems, which means the blueprint for how manufacturers should meet their customers' needs will never lend itself to be defined by a standards body or committee. At the same time, the industry cannot overlook standards that facilitate the transfer of data, rather than what do with it. As such, utilizing and supporting standards continue to be an important part of Mercury's roadmap. We have implemented and deployed several multi-party solutions based on PSIA, OSDP and other standards accordingly.

Robert Laughlin: These are extremely positive goals, and PSIA and OnVIF are certainly committed to this process. Wrangling dozens of manufacturers is complex; however we do believe that overall the industry recognizes that it is in the best interest of our customers to work towards the goal together.

David Eila: Someone once said that the great thing about standards is that there are so many to choose from, and that's very true of physical security. AMAG is more interested in standards that increase physical and cyber security than opening up access control systems through published protocols. Going forward the end-to-end integrity and security of the system is going to be the most important thing to ward off cyber-attacks. The real openness that most systems need is at the software level and we heavily promote integrations using secure XML web services.

Ajay Jain: No, the standards aren't creating pressures - it's the customers,

because they are no longer willing to use closed systems. More and more, they now insist on open architecture for their security and access control systems to ensure that they can pick best-of-class system elements that will work together. This is true at every level of their solution from card and readers, to management reporting, and to the "things" that are begin-

Open architecture is an often discussed, highly desirable feature for end users who want to feel comfortable not being committed to a single system for a lifetime.

ning to emerge from the Internet of Things. Providers that aren't open to supporting these standards risk being viewed as outdated and unwelcome with many customers.

John Szczygiel: This will be a reality when there is wider adoption of the full standards, assuming that the standards are responsive to the needs of the market. In the near term, most systems will continue to take the walled garden approach, balancing specific customer needs with the potential for interoperability offered by the standards. In the interim we're seeing a positive move away from custom integrations per sub-system to an Application Programming Interface (API) type of approach that is so

common in the IT world. This provides the ability for systems to be modular and extensible and yet full featured.

Mitchell Kane: Open architecture is an often discussed, highly desirable feature for end users who want to feel comfortable not being committed to a single system for a lifetime. Things change and needs evolve; it is nice to be able to upgrade access control software and have it communicate with all existing panels and smart locks without the need for rewiring and replacing hardware - similar to moving from one VMS system to another. Unfortunately, unlike the IT world, this market has been historically protectionistic; camera manufacturers more readily accepted standards such as ONVIF in the video market. We have to remember that this market has always been driven by standards, such as NTSC or PAL. Today, there is a big movement underway toward the responsible decision to not only integrate with proprietary manufactured boards but also with de facto industry open products (such as Mercury Security). Our road map has always been to adapt to standards as they are ratified. In the meantime, with the market influx of smart locks from various companies, this market appears to be in the proprietary protocol mode and will be for many years to come. ■

Steve Lasky is
Editorial Director of
Security Technology
Executive, Security
Dealer & Integrator
magazines and
SecurityInfoWatch.com.



Serious Scale-Ability.



ACCESS CONTROL • VIDEO • ALARMS • LOCKING

At last, a super scalable enterprise security solution guaranteed to grow with you, in one cost-effective, interoperable integrated package, scalable from several doors in one building to thousands across multiple global sites, for securing a modest staff to millions.



Ask about New Retrofit Rebate Program

While helping you secure the buildings, assets and occupants, we'll also protect your bottom line. Stop soaring costs - Don't be left hanging and forced to reinvest and repurchase new packages, modules and add-ons, every time your needs inevitably climb. With a single scalable and budget-stretching enterprise solution; an IT-friendly platform, our own upgradable software and controllers, the longest warranty in the business, proven lowest maintenance costs, 24/7 remote management control, SaaS, unsurpassed FIPS/TWIC/CAC support, threat-level management and one-company integration, ContinentalAccess will always have your back, integrating leading-edge, turbo-charged access control, fire/intrusion alarms, designer architectural locking and a growing list of video partner choices.



Continental Access

800.645.9445 • salesinfo@icaccess.com • www.icaccess.com

Request information: www.SecurityInfoWatch.com/10213301



Managing access control goes “remote”

Remote management is cost-efficient, expands services and adds client convenience

*Above: With cloud based technologies advancing the capabilities of access control, security dealers and manufacturers are looking more to remote management as a cost-efficient and capable mechanism for expanding services and adding convenience.
Image Courtesy of BigStock.com*

Over the last decade, integrating a commercial access control system has meant moving beyond the physical safety and security of a building, to addressing the network security of systems used to monitor and remotely manage different parts of the access control ecosystem, all while adding new subsystems and functionality. The traditional perspective used to be focused on the physical location of the equipment installed in a client’s facility and the equipment was specific to that location. It had to be managed on site and featured “at the edge,” field level integration. Access to the equipment and

features were only available at the physical location and service requests had to be dealt with during a truck roll, costing the client and the installer time and money.

With cloud based technologies advancing the capabilities of access control, security dealers and manufacturers are looking more to remote management as a cost-efficient and capable mechanism for expanding services and adding convenience. Cloud based ecosystems share the burden of storage and data across technologies, bringing down costs and bringing greater value to the customer. The latest innovations include use of the cloud and remote access to offer great functionality and lower costs with the field level integration all within secure pipelines.

TAKE A CONTROLLING INTEREST IN THE ENTERPRISE.

← **IT'S MORE THAN THE DOOR.** →

Security is often mission-critical in today’s challenging environment. Getting a handle on it can be fundamental to managing a successful business. If you are relying on edge-based door control alone, think beyond for total security. Our partners can help you achieve a solid, systemic solution using the Authentic Mercury open platform to manage the entire organization. Because when it comes to taking a controlling interest in your enterprise, Mercury and our partners are 100% vested in securing it.

mercury-security.com/more-than-the-door.html



Give your access control solution wings.



Platinum Elite Partners



Platinum Partners



"Newer API and SDKs for commercial security systems are evolving to include field level and cloud based integration, embedding them together to deliver a better and more robust experience for customers," said John LaFond, vice president, integrated systems, Nortek Security & Control.

From a dealer perspective, installing systems with secure remote management capabilities, especially ones with a holistic ecosystem approach, means added value and peace of mind for customers. A server based appliance embedded on a client's network that can be accessed via the cloud is much more secure than relying on just a web-based app connected to the cloud. Using advanced cloud technologies with equipment at the edge allows dealers to remotely login and control the environment, providing additional RMR opportunities after install and the ability to service without a truck roll, while maintaining a secure pipeline that is much less susceptible to viruses, hacking and disruptive software updates.

The list of potential add-ons in the access control ecosystem has grown significantly as well. Some of the systems that can now be integrated and monitored or managed remotely, include: video analytics, site threat level, after hours management, monitored CCTV, site audio, elevator/floor control, HVAC interface, interactive communication, multi-site administration, site perimeter access, visitor management, parking control, license plate recognition and more.

"Access control used to require more infrastructure and equipment, using time and client resources. Remote monitoring through things like closed circuit TV was easier to sell because customers liked the idea of being able to remotely view their property," said Bob Ricucci, president and CEO of Advanced Security Technologies. "Now with cloud based integration, the barrier to entry is much lower. We can offer customers a broader range of interoperability and level of service at the right price."

Security dealers often encounter customers who not only see remote access as more feasible for their install, but also expect to have these features in their systems. Innovation and price efficiency have contributed to the

adoption of more cloud based technologies in remote monitoring, but another real driver has been widespread acceptance of remote capabilities resulting from the proliferation of smartphones and other mobile devices, and the convenient they provide through greater connectivity.

"We didn't get a lot of traction with remote access when it was a server based solution – people were hesitant to say yes and hand off control to their buildings," remarked Ricucci, "With the changing mindset of clients and general acceptance of remote connectivity, these offerings became more common and profitable."

Changing customer mindsets was one hurdle to overcome in offering remote access solutions, but changing infrastructure requirements for solutions and the lowering of price points and scalability of software to control 2 doors to 200 doors has made this a winning technology trend in security. Today, building automation system maintenance such as backups and service changes, as well as controlling lights, doors, locks and other security features, can all be done remotely with cloud based access systems.

Seeing this evolving trend, security systems manufacturers are looking at ways to bring a competitive advantage in their products by embedding access control solutions into the overall ecosystem and creating the most secure pipeline possible for remote management. Nortek Security & Control's



The use of a remote management application enables easy and secure remote access to the hosted web server, even if the device is located in a private or mobile network behind a router or firewall.
Photo Courtesy of Linear

next generation professional access control system from Linear is one such example. Remote Management Console (RMC) connectivity within the system is based on an extension of the well-known and proven HTTP protocol with key exceptions. In traditional HTTP connections, the client (web browser) is responsible for opening a connection and sending requests to the equipment's web server. With RMC, however, it's the Linear appliance that establishes the HTTP network connection, using its RMC app to open a more secure connection to a dedicated server called the RMC Server. Since the RMC Server simply forwards HTTP requests, without storing any critical data, the RMC service does not introduce any additional data security or privacy risks.

Linear's top-tier access control appliances come pre-loaded with the Remote Management Console and offer an alternative to port forwarding and virtual private networks (VPN). The use of a remote management application enables easy and secure remote

EVOLVING

Since 1948

In the ever changing world of communications, the DKS 1830 Series of Telephone Entry Systems has adapted to allow both voice and data to be sent via simple copper lines or through the air to cell towers. Form and Function that evolves with today's technology.

Telephone Entry Access Control Voice and Remote Programming via:



Cellular Wireless

Easy to install and setup, with instant access. No telephone lines or ethernet cable to install or maintain.



Voice over IP

DKS telephone entry systems now work with most VoIP to provide for reliable two-way voice communication and data transfer using your internet connection.



Wireless 2.4 GHz point to point

Excellent solution when trenching is not an option.



POTS Copper Phone Lines

Easy plug and play with our IM-Server interface.



doorking.com/connect

800-673-3299 info@doorking.com

Parking Control Access Control Telephone Entry Gate Operators

Member: AFA, DASMA, NAA, IDA, NOMMA, NPA, SIA, SSA

AT&T 4G LTE logo and all other AT&T marks contained herein are trademarks of AT&T Intellectual Property and/or AT&T affiliated companies.

Request Information: www.SecurityInfoWatch.com/10213482

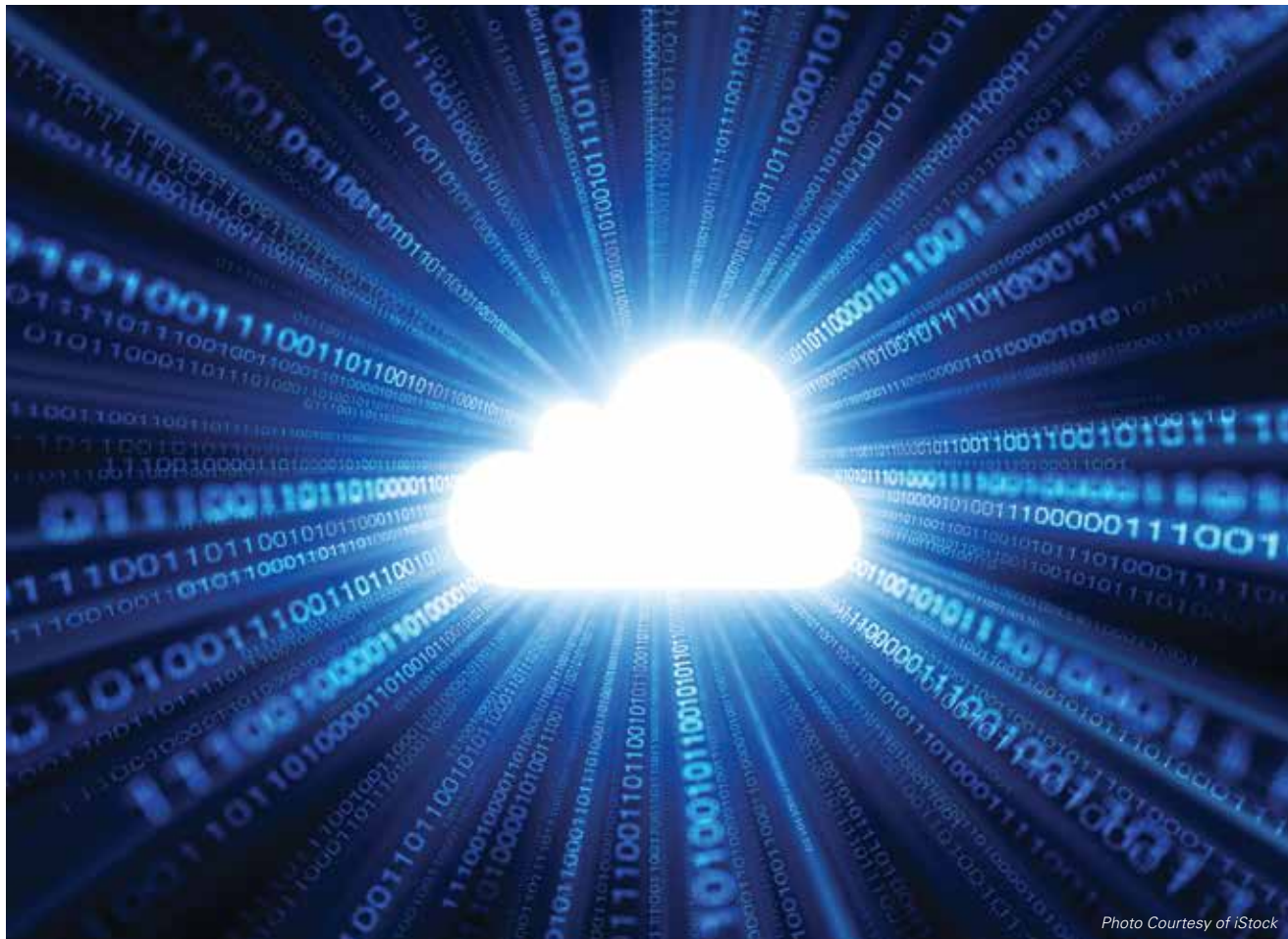


Photo Courtesy of iStock

access to the hosted web server, even if the device is located in a private or mobile network behind a router or firewall. Today's market requires security technologies be protected by a firewall and this type of console ensures secure remote access even when additional cyber security solutions are in place.

The caveat to having great technology is that it becomes a hindrance when it's not working in unison with other critical technologies. Customers want to control more with less and they want to work with as few vendors as possible and do it as efficiently as possible. Access control platforms with an open architecture that allow the integration of outside brands and systems, even older ones, will emerge. The implementation of more advanced asset tracking and automation processes will streamline operations and lower consumption of energy and other resources for businesses.

More and more dealers are seeing the competitive advantage to all-in-one

remote access solutions because they encompass an entire commercial security and access control management ecosystem. Remote access ecosystems open up a variety of revenue streams through enhanced support and RMR services. Features like elevator control, anti-pass back, threat level / lock down, partitioning, custom reports, administrative audit trails and video viewing can be securely managed on or offsite through remote dashboards.

"These are the default solutions we are offering our clients today – it's like buying a Mercedes S class and not putting any gas in. There are wonderful systems available and for a small charge a month, you can amplify value three or four times," added Ricucci.

Even with a small monthly charge, many access control systems are actually lowering the total cost of ownership through technology. This is reflected in a number of ways. Solid-state Linux design lowers TCO by removing many of the license fees, simplifying

installation, lowering hardware costs and providing a flexible and secure embedded appliance at the core. With this type of system, there are no monthly cloud service fees, no client and database license fees, and no need for dedicated PC workstations. Plus, the pre-activated remote management console opens up RMR opportunities and provides feature rich security and access control management.

"The trend in the market is to deliver embedded access control solutions that offer broad compatibility with a wide range of systems and a truly secure pipeline for remote management," said John LaFond, vice president, integrated systems, Nortek Security & Control. "Ultimately, it's about opening up new opportunities for recurring revenue and attachment sales to increase the lifetime value of every customer, while simultaneously lowering their operating costs and meeting their security and access control needs more effectively." ■

TO CELEBRATE 30 YEARS OF INNOVATION, EXCEPTIONAL SUPPORT, AND AN INDUSTRY HIGH 5 YEAR WARRANTY, PAXTON IS OFFERING A PROMOTION ON THEIR NEW PaxLock. SEE PARTICIPATING PAXTON DISTRIBUTORS TO TAKE ADVANTAGE OF BIG SAVINGS NOW THROUGH THE END OF AUGUST!



877.438.7298

Net2 | PaxLock

Net2 PaxLock is a secure wireless battery powered access control unit. PaxLock works seamlessly with Paxton's leading Net2 software, giving you networked access control that is easy to install. Simply remove existing cylindrical lock and replace with Paxlock!

*Promotion valid only for Paxton part #921-130-US, #921-131-US, #921-160-US, and #921-161-US
Promotion expires August 31, 2015.
Cannot be combined with Project Registration Discounts

paxton-access.com

SalesUS@paxton-access.com



Request information: www.SecurityInfoWatch.com/10215750

by Gale Johnson

Wireless Access Control has Head End in the Clouds

Salto advances traditional door technology to new heights

Salto Systems Inc. is well-known for their innovative, keyless access control systems. For most applications the familiar Salto lock cylinder can replace lock cylinders in existing hardware.

A projection at the front of Salto cylinders contains the operating electronics and serves as a turn knob. When the proper credential is presented, the turn knob becomes active and can be used to operate the lock. Salto access control systems have been successfully installed in commercial applications such as government buildings, schools, airports, corporate buildings and healthcare facilities.

Salto has recently introduced a wireless access control system called Clay. The Clay security system uses a sensor which replaces the existing mechanical lock cylinder. A fob, called a Clay-Tag, is used to unlock the lock when the Clay-Tag is held near the sensor. Clay system information is stored in the Cloud and controlled from a central location in Holland. According to Salto, Cloud technology allows storage of large amounts of information while providing the highest security available and also provides instant control of Clay locking systems worldwide. Redundant storing of data on the Cloud assures dependable accessing of information at any given time regardless of whether one of the Cloud sites has a power or server failure.

When a Clay user presents a Clay-Tag near the sensor, information is sent by Cloud to the Holland Salto facility where the specific Clay-Tag is verified as having the correct information to operate the door lock. A signal is then sent back via Cloud to unlock the required door. A recent Salto demonstration of the Clay System at ISC West in Las Vegas showed how quickly data was transferred across the globe to Holland and back allowing subsequent door unlocking in seconds.

CLAYIQ is described as the "heart" of CLAY. Once this unit is plugged into a building power outlet it becomes the controller for the Clay access control system. The CLAYUQ unit connects Clay lock cylinders to the My-Clay cloud. CLAYIQ automatically connects itself to the Clay cloud once it is plugged into a power outlet.

Clay App is available at the My-Clay.com website. A dashboard on the App provides full control for operating



A projection at the front of Salto cylinders contains the operating electronics and serves as a turn knob. When the proper credential is presented, the turn knob becomes active and can be used to operate the lock.
Photo Courtesy of Salto

Clay locks. The App can be used on a laptop or a smart phone and by IOS or Android users. A Clay door lock can be remotely unlocked, notifications are sent when a door is not fully closed, times for Clay-Tag usage can be set and new Clay-Tag users can be enrolled or removed. These features and more are controlled through the Clay App.

The Clay systems provide a fast, economical way to install access control. Clay wireless sensors are battery-operated. According to Salto, batteries will last for approximately 40,000 openings. As example, the batteries can operate a Clay cylinder approximately 55 times a day over a two year period.

"SALTO was established in 2001 and its products are designed to be smart and utilize data card technology and to be a direct hard key replacement in access control with a full line of escutcheons and lock types to meet every application and provide extensive access control features such as operation restriction of use and full audit trail," says Miles Ethridge, the U.S. National Accounts Manager for Clay by SALTO. "From its humble beginnings, SALTO is now one of the world's top 10 documented manufacturers in access control."

Clay by SALTO was introduced in the U.S. in April at the ISC West Show and has quickly become a requested product for multifamily housing, rental properties and medical facilities as well as anywhere access control is required, all without the need for hard wiring. Clay by SALTO can be installed in as little as 15 minutes.

"Clay by SALTO was a vision of ours many years ago for providing a cloud based operated access control system which

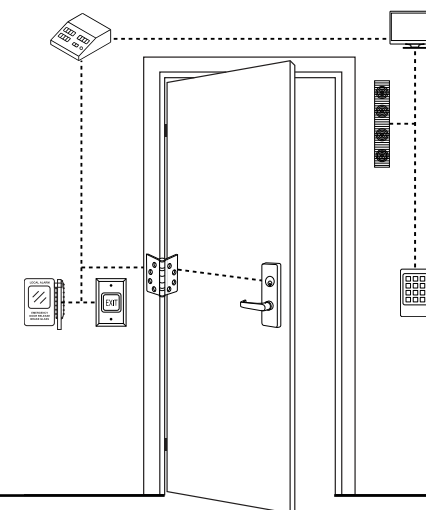


Retrofit Exit Devices for Access Control

SDC's Quiet DUO™ LR100 Series Electric Latch Retraction Kit retrofits most brands* of mechanical exit devices. With higher voltage tolerance - up to 26.5 volts - and stronger pulling force, the LR100 provides quiet, low current ^a durability. When paired with other SDC access control components, compatibility is guaranteed!

For details and specifications: SDCSecurity.com/Solution13

^a 700mA Inrush, 200mA Continuous @ 24VDC



- Cal Royal
- Precision
- Von Duprin
- Best
- Dorma
- IDC
- Marshall Best
- Sargent
- Hager
- Schlage
- Tell
- Dor-O-Matic
- Arrow
- Design Hardware
- Town Steel
- Marks
- Falcon
- K2
- Adams Rite
- Detex

the lock behind the system





Salto has recently introduced a wireless access control system called Clay. The Clay security system uses a sensor which replaces the existing mechanical lock cylinder. A fob, called a Clay-Tag, is used to unlock the lock when the Clay-Tag is held near the sensor.

Photo Courtesy of Salto

requires no internet connection but allows users to use an application to control their doors/locks whether it be unlocking them remotely, giving permission to people to gain access to the locks via remote operation or local with a key fob all with the use of smart devices and no need for hard wiring a door," Etheridge adds.

According to Etheridge, Clay door locks fit

every door/locking application, install in 15 minutes and are fully wireless. The locks come in different finishes and with several handle sets to best match you building design. Clay by SALTO is also available as cabinet locks as well as padlocks.

"We provide such a wide variety of applications that it is difficult to provide exact pricing for a system. That being said, pricing can range from as little as \$450 to \$1000 based on the installation. Locksmiths can purchase the product through distribution or from authorized Clay by SALTO dealers," says Etheridge. "Special training is not needed but is recommended for the first initial installs. We also provide many on-line videos for self-instructions."

The performance of the product is not internet accessed. It uses cellular GSM technology to connect with the cloud, so loss of internet connection is not a factor. If connection to the cloud by some chance is completely lost, yes the persons credential will continue to operate as there is redundancy built into the lock.

"Our wireless locking system is cloud

based. Our product controlled by a smart phone or web based smart device- no software required. The product allows remote locking and unlocking of doors as well as cancellation of a person's access right all in real time and allows for an audit trail of all doors and all users," Etheridge says. "It is cost competitive as compared to a hard wired access control system and just slightly higher in cost when compared to a commercial grade brass key-operated lock. Plus, there is no need to ever re-key again."

For more information on Salto and this cloud-based product, contact Miles Etheridge at m.etheridge@salto-systems.com. ■

About the Author:

Gale Johnson is the editor-in-chief of Locksmith Ledger International magazine and has been a locksmith for more than six decades. He can be contacted at gale.johnson@cygnus.com.



A Member of the Kaba Group



Access Control Management Software



Centrally Managed & Hosted Services



Readers & Credentials



Access Control Hardware



E-Plex Electronic Locks



PowerPlex Self-Powered Locks

Kaba Electronic Access Control (EAC) anchored by Keyscan

Introducing Kaba Electronic Access Control (EAC).

Since Keyscan Inc. became a member of the Kaba Group, our look may be changing but our horizon has broadened significantly.

With product and software integration already underway and access to more product lines and solutions, all of our integrator customers and end-users will stand to benefit.

The innovative network appliance-based Keyscan access control system remains best-in-class. With its multiple integration options it continues to provide unmatched feature-to-price ratio as well as system scalability and flexibility.

Powered by our industry renowned single-platform access control management software, our versatile door and elevator floor access control systems will support any access control deployment, regardless of project size or scope.

KEYSCAN

With Keyscan anchoring a robust and growing product line, Kaba EAC offers you full, end-to-end, electronic access control solutions.

Contact us today and let our innovative solutions solve all of your access control challenges.

End-to-End access control solutions from Kaba EAC

BEYOND SECURITY



Schlage® NDE Wireless Lock

ALLEGION

New Schlage® NDE wireless locks with ENGAGE™ technology from Allegion streamline the transition

From SOUTHERN LOCK EAS Electronic Access Specialists

NO EXCUSES from mechanical keys to electronic credentials.

Easy to Install • Easy to Manage • Easy to Use

ENGAGE technology makes it simpler and more affordable to use electronic locks and credentials in interior commercial office applications.

Using wireless technology, the ENGAGE platform allows users to gain access to interior offices, common areas, and other sensitive places by using mobile credentials on a compatible smart phone or by using the existing building ID card. ENGAGE cloud-based web and mobile apps make it simple to manage electronic credentials and locks in just a few easy steps.

For basic applications, the ENGAGE apps provide the freedom to manage locks, add and delete credentials, and view lock history from anywhere via smartphone or iPad app. NDE Series wireless locks can be updated manually at the lock with the ENGAGE mobile app, automatically daily over Wi-Fi 2, or in real-time when connected to an ENGAGE gateway.



Multiple Finishes Available



Call 1.800.282.2837 For Special Pricing

Our New Catalog is Now Available: www.SouthernLock.com

NDE Series wireless locks with ENGAGE technology are compatible with most proximity and smart cards including aptiQ™ and aptiQmobile™

SLSC-SDI-ALL-0615C

Request information: www.SecurityInfoWatch.com/10215166

Luxury Resort Community Goes HIGH TECH

Morse Watchman's key management system decreases liability

With approximately 300 sunny days per year and an annual average temperature of 72 degrees, the greater Phoenix area attracts visitors from all over the country and the globe. Along with the City of Phoenix, the surrounding communities of Scottsdale, Chandler and Mesa offer an attractive winter alternative to the snow and cold of the northern climates, while the resort communities appeal to a wide range of winter residents.

One of the premier living communities in the area is Gainey Ranch, situated in the heart of Scottsdale. More than 1000 homes are located in the walled and gated resort community, with manned entrance gates leading to the residential neighborhood. Within the community, security personnel are on duty 24/7 and each residence contains an alarm system for protection against intrusion and to alert fire, police or medical services.

Key Control Moves from Manual to Automated

Gainey Ranch is continually renovating facilities and upgrading technology to maintain their reputation as a luxury resort community, and to ensure the ongoing safety and security of its residents. Most recently an automated key control and management system from Morse Watchmans was installed to provide an additional layer of security for the residents as well as an added level of convenience. Now, residents no longer need to leave a spare key with site operations to be stored in a folder and possibly lost. Instead, the homeowner's key is secured to a locking device and held in the KeyWatcher tamper-proof, locked cabinet. The system's automatic tracking of key access activity provides important accountability.



The KeyWatcher system from Morse Watchmans meets all of the community's security and convenience needs and more, according to Jim Funk, Executive Director at Gainey Ranch.
Photo Courtesy of Morse Watchman

Keys in the system may be used if management or emergency services need to enter a resident's premises in the event of fire, medical emergencies or other suspicious activity. Residents also often hire the services of outside contractors and require that, in their absence, a key be provided to a contractor for on-site work.

The KeyWatcher system from Morse Watchmans meets all of the community's security and convenience needs and more, according to Jim Funk, Executive Director at Gainey Ranch.

"The previous system of manually storing keys was a huge liability for Gainey Ranch because of the potential for misplaced or lost keys," says Funk. "We had no reliable way of tracking the keys or even securing them. The KeyWatcher system removes that liability by ensuring that all keys are securely stored in the cabinet and are easily accounted for."

High Tech Solution that's Convenient and Secure

Access to the key cabinet is controlled by Funk's Security department. Security staff or other authorized users can only remove keys through biometric fingerprint recognition. If the criteria entered matches the information stored in the system

by Fernando Pires

Standing Up & Standing Behind You for Life

Marks USA Locks for healthcare, education, multi-dwelling residential, commercial & institutional applications... all value-engineered for life*, protecting your accounts and your business:



- Higher quality, longer lasting, lower maintenance design
- More competitively-priced for exceptional value
- Exceed BHMA ANSI Grade 1 Spec, by as much as 300%
- More models, retrofits, finishes & functions



Built to stand up for you, ask your Marks Distributor or Rep today!



1.800.526.0233 • salesinfo@marksusa.com • www.marksusa.com

Request information: www.SecurityInfoWatch.com/10214311

* Marks products all feature a lifetime mechanical warranty

database, the key cabinet will unlock and the necessary key can be removed or returned. The time, date and identity of the individual accessing the cabinet are all logged, as well as any notes added by the user, and the data is available to Mr. Funk with a few key strokes using key control data management software.

In addition to the improved security and accountability, Funk explains that

An automated key control and management system from Morse Watchmans was installed to provide an additional layer of security for the residents as well as an added level of convenience.

Photo Courtesy of Morse Watchman

the key management system provides significant benefits to the homeowners as well as to Gainey



Ranch operations. As an example, if a resident is not going to be at home when an air conditioning service is scheduled, they can easily make reservations to have the key released to the contractor by simply going to the Gainey Ranch web portal and entering the information (who, when, for how long, etc.) in their account. When the contractor arrives at the gate, security verifies the request from the information submitted by the homeowner. If the request matches the reservation, the guard enters the individual's name and phone number into the notes field for that key and then releases the key to the contractor.

The system is programmed to notify the homeowner by email or text that the key has been released. If it is not returned as scheduled, security follows up with the contractor, and both the homeowner and Funk's department are advised of the situation.

"The feedback from homeowners on the key management system has been extremely positive," adds Funk. "They're all quite tech savvy and they like the convenience of making arrangements through the website for key reservations and how it triggers notifications and follow up control."

He also says that because of the improvement in securing keys with the KeyWatcher system, many more of the residents are willing to participate in the voluntary program. Several of the commercial properties in Gainey Ranch have also indicated an interest in storing emergency keys in the Key-Watcher cabinet.

"Whatever we decide, it's good to know we can configure the system to our exact needs or expand it as more participants sign up," concludes Funk. ■

About the Author:

Fernando Pires is Vice President of Sales and Marketing at Morse Watchman.



Product door not shown in image
Fingerprint reader optional

We've got the touch

Store, manage and control keys, cards and small assets more securely and efficiently with Key-Watcher® Touch. Access is limited to authorized users, and all transactions are recorded with detailed reports available. The system will even automatically email transactional information to any user – at any time. And KeyWatcher's convenient touchscreen makes removing and returning keys easier than ever. With our modular design and full scalability, it's easy to see how we keep making key management better. That's Morse Watchmans' outside the box thinking – right inside the box.

think inside the box.



**MORSE
WATCHMANS**

Request information: www.SecurityInfoWatch.com/10214428

morsewatchmans.com • 1.203.264.4949



SCHLAGE

The NDE Lock

The easiest engagement you'll ever make



ALLEGION

Yes, it's true. The Schlage® NDE Series Wireless Lock with ENGAGE™ Technology is perhaps the easiest and most cost-effective electronic lock on the market to install, connect, manage and use. They're perfect for upgrading interior office doors, common area doors and sensitive storage spaces to electronic credentials.

Let us count the ways:

- NDE locks fit into standard cylindrical door prep – upgrade without replacing the door
- Installs in minutes using only a Phillips screwdriver (for real)
- Lever handing is field-reversible in seconds – no tools required
- Electronic credentials are easily issued on cards or smart phones
- Configure settings, manage users and view audits and alerts with ENGAGE cloud-based web and mobile apps

To learn more, call 855.847.5691 and "engage" with the world-famous hardware gurus at Access Hardware Supply. Like the Schlage NDE Lock, they make it easy for you to get the access control you require.



**ACCESS
HARDWARE
SUPPLY**

www.accesshardware.com

Request information: www.SecurityInfoWatch.com/10722906

Wireless Server Cabinet Lock

The KS100 Server Cabinet Lock from HES, an ASSA ABLOY company, is a wireless access control lock specifically designed to provide improved security in server rooms. It leverages the company's Aperio technology, which enables mechanical locks to be wirelessly linked to a new or existing electronic access control system. It uses a company's existing credentials and ID badges to extend access control from the server room entrance door to individual server cabinets.

For more information, visit www.securityinfowatch.com/11313883.



Outdoor Maglock

The G-Lock from EMX Industries is a magnetic lock for automatic swing and slide doors and gates with a stainless steel housing designed for outdoor use. It features 1,200 lbs. of holding force in a full enclosed housing. Other features include: front or side mounting options; status monitoring relay output; 12 or 24V DC operation; spring loaded plate for quick release; optional Z and L brackets for mounting; anti-tamper cover caps and a two-year warranty.

For more information, visit www.securityinfowatch.com/12086375.



Access Control Software

AMAG Technology has released its Symmetry v8.0.2 access control software, offering end-users a complete unified, end-to-end security solution to manage all security and complementary technologies in one place via an intuitive user interface. The software allows the matching of a full 128 bit number stored on specific card types to comply with FICAM requirements - particularly important for U.S. Government users and other customers moving to PIV-I and CIV credentials.

For more information, visit www.securityinfowatch.com/12059734.

RTE Button Stopper Station

The ADA-compliant, multi-purpose 3-in-1 Stopper Station push button from STI offers three button activation choices. The user can easily select momentary, latching Turn-to-Reset or latching Key-to-Reset. Each button has two Form "C" contacts rated to 100,000 operations. Button housing is offered in six colors with a 3D custom label. Push button inserts include: exit, push to exit, push or blank. Also available with an optional button insert that illuminates red, green or white.

For more information, visit www.securityinfowatch.com/12052425.



Single-Door Controller

The KT-1 Ethernet one-door controller from Kantech, a unit of Tyco Security Products, is a cost-effective, yet feature-rich controller that was designed with installers in mind. Simply provide an IP connection and push a single touch-sensitive button to install. With its on-board Ethernet port for direct network connection, its Power over Ethernet (PoE) capabilities and its single button programming, the controller is automatically detected and enrolled on the EntraPass security management system.

For more information, visit www.securityinfowatch.com/11622124.

Access Control Product Line

Open Options' Fusion Suite includes DNA Fusion Access Control Software, Fusion Mobile, Fusion Web and Fusion ID. DNA Fusion v6.5 is an open-platform access control solution featuring personnel groups, system-wide macros, hardware edit and control, simple scheduling, segmented database, integrated photo ID and more. It can be controlled via mobile app or via web interface. Fusion ID allows users to create, manage and print ID cards and access credentials from a central location.

For more information, visit www.securityinfowatch.com/12053371.



Designer Wireless Access

Alarm Lock's Architech Series Network Locks elegantly blend advanced wireless access control convenience within any decor in a customizable designer locking form factor in choice of trims and finishes. Ideal in standalone, networked or enterprise class applications, durable Grade 1 access locks offer emergency lock-down/unlock option via lock, button, keyfob or server. Future-proof multi-technology access ID credentials replace cumbersome keys. They can control access a door at a time or as an part of an enterprise system.

For more information, visit www.securityinfowatch.com/12053296.

IP-Based Door Controller

SDC's IP Pro IP-based Single Door Access Controller - with embedded software and expandable up to 32 doors - bridges the gap between traditional locking hardware and IT networks. It saves cost and installation time by not having long cable runs and power supplies for every door; instead, it simply taps into the nearest Ethernet connection. The controller works via LAN or internet connected device. It installs easily at the door and only requires a single network cable.

For more information, visit www.securityinfowatch.com/12053249.

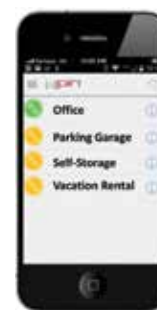


Digital Door Lock

The RITE Touch RT1050D is a digital door lock that provides keyless access control for all-glass openings.

The RITE Touch offers sophisticated styling, convenience, flexible access control, and safety and security for single or double glass doors. Perfect for indoor applications, the easy to install surface-mounted RITE Touch RT1050D combines elegant aesthetics with the latest touch screen technology, to harmonize style and security.

For more information, visit www.securityinfowatch.com/12053205.



Access Control as-a-Service

ECKey has introduced VIZpin LITE, a free single-door version of VIZpin, its cloud-based Access Control as a Service (ACaaS) and visitor management service. Any VIZpin-enabled device can be registered at VIZpin.com,

letting you send secure, encrypted VIZpin keys to that device from anywhere and to anyone with the VIZpin app. It records when those keys are used and the keys can be easily revoked without having to go onsite.

For more information, visit www.securityinfowatch.com/12071659.

Access Control Software

The ISONAS EasyWeb 2015 browser-based software allows users to manage their credentials and monitor access points in real-time across the globe. Business owners can manage their entire access control system from anywhere at anytime and have complete mobile simplicity. The responsive design ensures that the user interface is consistent whether using a computer, mobile device, or tablet to monitor a facility. New features include roster and history reporting to create a simple, one-stop platform for a wide range of users.

For more information, visit www.securityinfowatch.com/12070555.



Manual Sliding Door

DORMA Americas has introduced the MUTO manual sliding door system, which makes installation hassle-free with its compact, modular profile and easy integration of complementary functional elements. It offers a variety of features to provide convenience in everyday use. With aluminum finishes including clear anodized, similar to satin stainless steel anodized, and powder coat options, it can be matched to virtually any architectural interior. The line includes the MUTO Basic and MUTO Comfort systems.

For more information, visit www.securityinfowatch.com/12086264.

Interlock Controllers

The 4700 Series Interlock Controllers from Dortronics incorporate a watchdog circuit that constantly monitors operation and LED indicators for input-output connection status, and system busy or system idle confirmation. It includes suppression protection on all outputs to prevent inductive load locking devices from damaging the circuitry. Additional features include interlock violation alarm relay output; 4 DPDT relays (three powered and one dry contact for signaling); panic release and custom programmable propped door, panic release and door unlock timers.

For more information, visit www.securityinfowatch.com/12064375.



The Nation's Most Trusted Security Door Hardware Wholesaler

JLM Wholesale has been proudly serving customers for nearly 30 years. Our highly trained sales associates, vast inventory, 24 hour access web site and strategic shipping locations ensure we are your best source for security door hardware products. We stock top named products from Allegion, ASSA ABLOY, Stanley Security Solutions and many, many more.



MI 800-522-2940 ♦ NC 800-768-6050 ♦ TX 877-347-5117 ♦ JLMWHOLESALE.COM

Request information: www.SecurityInfoWatch.com/10214128



Gate Lock

The GL1 Electromechanical Gate Lock from Securiton, an ASSA ABLOY Group brand, provides

weather-resistant access control for a variety of gate applications. The unit is ideal for commercial, industrial and high-security applications such as swinging, sliding vehicle, pedestrian, stock, and remote field gates. The 2,000 lbs. holding force electromechanical gate solution now supports a standard mortise cylinder, which enables a key override to be used if necessary. It also includes a self-aligning receiver enabling it to handle 100 lbs. of pre-load.

For more information, visit www.securityinfowatch.com/12070549.

For more information, visit www.securityinfowatch.com/12070549.



Integrated Access Control

Vicon Industries Inc.'s IP-based access control management system, Vicon Access Controlm, is designed for complete integration with its ViconNet video management system, allowing for the automatic linking of video with corresponding access control events. The access solution is fully scalable, from small to enterprise-scale installations. Its interface enables control from any web-enabled PC. Its controller architecture is built with a single board, with embedded Request to Exit Motion sensor, on board communications, back-up battery support and removable terminal blocks.

For more information, visit www.securityinfowatch.com/12060288.



Mobile Access

ASSA ABLOY offers HID Mobile Access support across a range of access control locks from brands Corbin Russwin and SARGENT. This enables the ability to use phones and other mobile devices enabled with Bluetooth Smart and NFC credentials with the IN120 WiFi lock, Access 700 and Passport 1000 PoE and WiFi locks, and the SE LP10 Integrated Wiegand lock. HID Mobile Access powered by Seos enables the issuing, delivering and revoking of digital credentials on mobile devices.

For more information, visit www.securityinfowatch.com/12070107.



Multi-Family and Small Business Solution

The multi-family solution from Yale Locks & Hardware includes the nexTouch access control lock, Yale Real Living digital deadbolts, and user-friendly, cloud-based software specifically designed for managing multi-family properties. The small business solution includes the same locks plus integration with interactive service platforms, such as those from Alarm.com, Honeywell and iControl. The solutions provide security integrators with an opportunity to provide greater value to their customers by solving specific challenges within these markets.

For more information, visit www.securityinfowatch.com/12072419.

For more information, visit www.securityinfowatch.com/12072419.



RemotePoint module for eFusion system

Maxxess has unveiled RemotePoint, an advanced eFusion module that allows remote access control and verification through the company's eFusion security management platform. Seamlessly integrated with ambit, the company's mobile workforce management solution, the integration of the two technologies drives operational efficiency across both facilities management and security operations. Using handheld devices, RemotePoint allows security personnel to perform access control transactions anywhere, verify staff credentials and perform mustering in the event of an emergency.

For more information, visit www.securityinfowatch.com/12086222.



Contactless Card Readers

The Guardian vandal-resistant and Gibraltar bullet-resistant contactless proximity card readers from Farpointe Data, a DORMA Group Company, are ideal for installations where more durability is required than with a standard proximity reader. The electronics are sealed in weather- and tamper-resistant epoxy potting for both indoor and outdoor operations, not only providing an IP67 rating but protecting the electronics from water, steam, detergents, dust, sand, tools and other elements which could be used to impede data collection.

For more information, visit www.securityinfowatch.com/12086255.



Single Door Controller

Mircom's TX3-CX-1 is a single-door PoE controller with a unique design that simplifies access control. It provides all the essentials for a door controller, in addition to extra features. It easily mounts onto a standard

single gang electrical box and features a built-in proximity reader that can be networked using TIA/EIA-485 and/or TCP/IP. The unit is ideal for any door that requires access control where wiring to a traditional metal cabinet is difficult.

For more information, visit www.securityinfowatch.com/12086386.

Fingerprint Door Lock

The ML10 biometric fingerprint door lock from ZKAccess is easy to program and install, with no wiring required. It's a plug-and-play replacement to a lock-and-key door knob. Registering users with their fingerprints is quick and easy, and each ML10 door lock can store and recognize up to 40 users. Users simply touch the fingerprint sensor to open the door. Ideal for residential and small business applications, the product's door handle, latch and strike are reversible for either left or right-handed.

For more information, visit www.securityinfowatch.com/12067993.



Access Control Management Platform

The latest release of Software House's C•CURE 9000 security and event management solution - version 2.40 - includes visitor management functionality, area pass-through and building automation monitoring capabilities along with numerous other product additions and enhancements. The visitor management functions enable users to manage appointments and create temporary credentials, providing a digital replacement for paper-based visitor logbooks. The system also helps bring together standard building management systems through a licensed BACnet interface.

For more information, visit www.securityinfowatch.com/12086199.

Access Control Management

The AC2000 v.7 access control product line from CEM Systems, a unit of Tyco, offers new features that increase the performance, including intercom functionality, online card validation support and enhancements to AC2000 WEB. The system also offers enhanced functionality of the emerald intelligent access terminal, a touch screen reader and controller in one, with built in Voice over IP (VoIP) intercom functionality. It now integrates with Salto offline locks utilizing SHIP (Salto Host Interface Protocol).

For more information, visit www.securityinfowatch.com/12060730.



Mortise Lock Platform

The EcoFlex electrified mortise lock platform from ASSA ABLOY Group brands Corbin Russwin and SARGENT is now available with several high-security monitoring options and deadbolt functionality. The platform is available with internal end-of-line resistors for comprehensive monitoring of the circuit between the access control panel and lock. End-of-line resistors are commonly improperly installed at the access control panel or above the door, leaving the wiring to the lock vulnerable to undetected tampering or damage.

For more information, visit www.securityinfowatch.com/12070088.



REGISTER NOW, [HTTP://SECUREDCITIES.COM/PRICING.PHP](http://SECUREDCITIES.COM/PRICING.PHP)

REAL-WORLD SECURITY SOLUTIONS

This year's event will feature 40+ peer-led sessions providing real-world security and public safety solutions for management operations, funding, grant approvals, strategies for partnering and collaboration, technology selection and systems implementation.

Plus, unique on-site security tours of NASA's Houston Space Center, The Port of Houston, Houston's TranStar Emergency Ops Center, Texas Medical Center and City of Houston's Emergency Operations Center*

*Tours are subject to change.



SECURED CAMPUS | SECURED TRANSIT | SECURED HEALTHCARE

Cutting-Edge Solutions to Protect Your Cities

NOVEMBER 10-12, 2015 / HOUSTON, TX

Brought to you by: SECURITY TECHNOLOGY EXECUTIVE, SD&I Security Dealer & Integrator, Security InfoWatch

LET, OFFICER.com, Law Enforcement product news, MASS TRANSIT

FOR MORE INFORMATION AND TO REGISTER, VISIT SECUREDCITIES.COM

Request information: www.SecurityInfoWatch.com/10752984



Cloud-Based Access Control

Clay is SALTO Systems' wireless, cloud-based access control solution for small and medium enterprises (SMEs). The system combines an easy-to-use web application and mobile app for access management, with high quality and designer hardware that is quick to install, at less than 70 percent of the cost. The system replaces a standard lock and mechanical key with a ClayTag, a SALTO Systems' wireless lock, and a ClayIQ that communicates wirelessly with the lock and the cloud.

For more information, visit www.securityinfowatch.com/12086364.



6121 ProSeries Weather Tough Padlocks

To better help customers with security coding efforts for different work site locations, departments and employee identification, Master Lock has introduced six new vividly brilliant colors for its durable 6121 ProSeries® Weather Tough® padlock.

Offering outstanding security and the same essential features as the original 6121 padlock, this ProSeries line extension includes more customized options by adding Red, Green, Yellow, Blue, Orange and White to the product roster. It's nearly impossible to pick, making it ideal for outdoor commercial and industrial applications. Master Lock Company offers a broad range of innovative security and safety solutions for consumer, commercial, and industrial end-users. For more information, visit www.securityinfowatch.com/12086404.

Biometric Residential Door Lock

KT&C and SRI Intl. have launched KEES, an iris recognition door lock powered by SRI's Iris on the Move (IOM) technology. The residential door lock combines the accuracy of iris biometrics with the ease of a push-pull handle for simple, keyless access at a glance — eliminating the need to fumble for keys, enter a PIN or put down the groceries. Ideal for multi-unit residential properties and apartment buildings, the lock became available for order in April 2015.

For more information, visit www.securityinfowatch.com/12069490.



Elegantly Styled Access Control

Camden Door Controls' CV-900 Designer Series access control devices are compact, elegantly styled and available in a selection of finishes that will enhance any décor. The line includes metal backlit keypads, dual format proximity card readers (HID/AWID) and capacitive biometric fingerprint readers. They are elegantly styled and available in a range of anodized architectural finishes (white and metallic silver, charcoal and red). They are IP65 rated and engineered for indoor and outdoor use.

For more information, visit www.securityinfowatch.com/12071642.



Kevo Home Connect Bridge

Kwikset's Kevo Home Connect Bridge device accessory seamlessly integrates the Bluetooth-enabled Kevo smart lock with home automation and security systems. The bridge translates a ZigBee or Z-Wave radio communication to Bluetooth low energy (BLE), enabling the lock to be integrated into a range of smart home scenarios such as lighting scenes, thermostat settings, security camera settings and more. Additionally, the functionality of the Kevo smart lock and mobile app has been expanded to include remote locking and unlocking.

For more information, visit www.securityinfowatch.com/12086354.



Starter and Expansion Kits

Paxton offers both two-door starter kits and one-door expansion kits for its Net2 Plus to make it simple to design and quote a system to fit any need. The starter kits come with everything you need to get a two door system up and running, including Net2 Plus controllers, P50 readers, a USB enrollment reader, 10 keyfobs and 10 prox cards, and the Pro version of Paxton's Net2 software. The expansion kit includes a Net2 Plus controller and a P50 reader.

For more information, visit www.securityinfowatch.com/12086229.



Cloud-Based Access Management

The RemoteLock ACS from LockState is a cloud-based access management system that integrates external door controllers with internal stand-alone Wi-Fi connected locks for a complete access solution. With an easy to use and intuitive browser-based interface, the system integrates open architecture hardware from best-in-class manufacturers like Mercury and HID. It not only includes traditional physical access management hardware typically used for perimeter access points, but also integrates internal Wi-Fi stand-alone door locks.

For more information, visit www.securityinfowatch.com/12070554.



CREATING THE FUTURE OF SECURITY... TODAY



The Security Professionals' first choice for today's security infrastructure, from one room to multi-location complexes around the world. Our reputation is based on a time-honored tradition of rock-solid quality, premium reliability and the integrity of DSX and our network of factory-trained, authorized dealers and support.

When you are staking your reputation on a solution – choose the most powerful and intelligent access control systems in the world, choose the total security relationship with DSX.



- No "Per Seat" Licensing In System Pricing
- LAN/WAN Compatible
- Smart Card and Biometric Integration
- Unlimited Access Levels Per Cardholder
- Integrated Photo ID Badging
- Backup SQL Server

DSX Access Systems, Inc.



www.dsxinc.com

10731 Rockwall Road | Dallas, TX USA 75238-1219
888.419.8353 | 214.553.6140 | sales@dsxinc.com

- Backwards Compatible Architecture
- Alarm Text Message/ E-Mail Notification
- Hot Swap Redundant Communication Server
- High Level Elevator Control Interface
- Integrated Wireless Locksets

Quality. Reliability. Integrity. The Security Professionals' First Choice.

Request information: www.SecurityInfoWatch.com/10214208



AS100 Sensor



KS100 Server Cabinet Lock



IN100 Commercial Lock



A100 Keyless Entry Control for Aluminum and Glass Doors



Easily secure everything from doors to drawers



R100 Reader for Glass, Stone and Brick Surfaces



M100 eCylinder for Retrofit Applications



K100 Cabinet Lock



PR100 Institutional Lock

Copyright © 2015 ASSA ABLOY Inc. All rights reserved.

Aperio® is the only wireless solution that offers one simple solution for any application.

ASSA ABLOY

Simple to Integrate

Works with your new or existing access control system; Global technology enables standardization worldwide.

Simple to Manage

Real-time communication to the access control system ensures easy management of access rights.

Simple to Expand

Adds access control capability to more openings, including cabinets, drawers, and more.

IntelligentOpenings.com/Aperio



Scan this QR code using your mobile phone to learn more.

Technology Partners:



Available from ASSA ABLOY Group brands:
ADAMS RITE | HES | MEDECO | SARGENT | SECURITRON

Request information: www.SecurityInfoWatch.com/10212899

The global leader in door opening solutions