

# BIGBOOK

**SD&I**  
Security Dealer & Integrator

**SECURITY**  
TECHNOLOGY / EXECUTIVE

**LOCKSMITH LEDGER**  
International

THE SECURITY INDUSTRY'S PRODUCT GUIDE • **SPRING 2018**

## EXO...The Last Crimp Tool You Will Ever Need

Platinum Tools new ezEX-RJ45® Termination System provides a solution for terminating larger diameter twisted-pair cables. The new patented EXO Crimp Frame™ is a RJ45 crimp tool that can terminate multiple sizes of cables and conductors, with conductor sizes up to .048" found in Cat5e/6/6A cables. It currently features two interchangeable dies that work with EZ-RJ45® and ezEX-RJ45® connectors. The EXO™ Crimp Frame and dies pair to ensure a flush cut and reliable termination every time.

The ezEX-RJ45® connector has a hi-lo stagger design to increase performance and accommodate larger conductors while maintaining the EZ® pass through design...saving time and money without sacrificing performance.

The ezEX-RJ45™ Termination System is winner of the Residential Systems "Best of Show" CEDIA award and 2017 BICSI Winter Award. (p/n 100061C).

Request more information:  
[www.SecurityInfoWatch.com/12382366](http://www.SecurityInfoWatch.com/12382366)

[www.platinumtools.com](http://www.platinumtools.com)



## Theia Technologies' Award-Winning 4K Lens Family

Theia Technologies' family of 4K Day/Night lenses provides full 12-megapixel performance for the most demanding high-resolution applications, such as traffic monitoring, ANPR/LPR, stadiums and data analytics. Just two lenses cover a horizontal field of view of 7 to 112 degrees, with the SL/TL410 lens providing a focal range of 4-10mm, while the SL/TL1250 telephoto lens offers a 12-50mm focal range.

Both lenses have excellent IR correction with less than a 5-micron focus shift in Near IR light for superior Day/Night performance. And at f/1.4, the SL/TL410 lens offers excellent light gathering ability in low light conditions. The lenses are designed to cover the larger 1/1.7" 4K image sensors while at the same time resolving the smaller pixels of the 1/2.3" 4K sensors. With both lenses measuring only 52mm long (64.5mm TTL), they are the most compact of comparable 1/1.7" format 4K lenses available on the market to facilitate use in domes and bullets, as well as on box cameras.

Both lenses feature a slip mount that enables the user to position thumb screws for convenient access to focus and focal range adjustments post-installation on the camera.

The lenses are offered in manual, motorized zoom, focus, IR cut filter and motor stops, with DC Auto-iris, P-iris, CS/C and D25 board mount combinations. For full specifications, drawings and CAD files visit the link below. For pricing and availability email us at [info@theiatech.com](mailto:info@theiatech.com).

Request more information:  
[www.SecurityInfoWatch.com/12399892](http://www.SecurityInfoWatch.com/12399892)

[www.TheiaTech.com](http://www.TheiaTech.com)



**Theia**  
TECHNOLOGIES

## Paxton's Net2 Entry Premium Monitor

The Net2 Entry Premium monitor is the latest addition to Paxton's video door entry range, Net2 Entry. The interior monitor comes with a capacitive glass touchscreen and free concierge management, as well as 25 vivid background themes. Enjoy two-way video communication when used with the exterior Net2 Entry Touch panel. The premium monitor is compatible with Paxton's networked access control system, Net2.

**NEW! Personalized Experience.** Add a photo or organization's logo to customize the monitor, and when used with the touch panel it will automatically display the image.

**NEW! Concierge Management.** Free – users can enjoy simple call and site management with broadcast messaging and do not disturb for when users are unavailable.

**NEW! Enhanced Call Administration.** Call snapshot captures an image of missed visitors and an event log helps users keep track of calls received and missed.

**NEW! Versatile Design, Suitable for More Sites.** Simple integration with your customer's doorbell, line-out for users with hearing aids, and high contrast themes available to ensure the screen is easy to read.

**Simple to Install.** A true plug-and-play solution for straightforward installation with a Net2 Entry system. The premium monitor is fully supported by Paxton's industry-leading technical support, 5-year warranty and hassle-free returns policy.

To see the new Net2 Entry Premium monitor in action, visit the Paxton website at the link below.

Request more information:  
[www.SecurityInfoWatch.com/12410500](http://www.SecurityInfoWatch.com/12410500)  
<http://paxton.info/3261>



## Adams Rite EX Series Exit Devices

The newly designed EX Series Exit Devices by Adams Rite is complete with four models offering customers sleek, flexible, installation-friendly solutions.

The new EX Series includes the **EX88 Interlocking Rim Exit Device**, with a robust and unique bolt design that interlocks the door to frame for enhanced strength and durability; the **EX89 Pullman Rim Exit Device**, which is compatible with Adams Rite preload capable 74R1 Electric Strike; the **EX76 CVR Exit Device**, with concealed adjustable rods and latching assemblies designed for easy installation; and the **EX80 Dummy Push Bar**, whose flexible design comes standard with two monitoring switches and is field selectable for active or inactive configuration.

The EX Series features modern, contoured design with matching metal end caps and no visible hardware from the back once installed. Complimentary trim is available to create a beautiful finish. Unique features, including impact bumpers, return control and vertical guides provide smoother operation and sound dampening for a superior user experience.

The adjustable mounting foot and mounting plate as well as provided adhesive templates assist with device mounting and reduce installation time. The EX Series is suitable for high-, mid- and low-traffic openings in aluminum, hollow metal and wood applications.

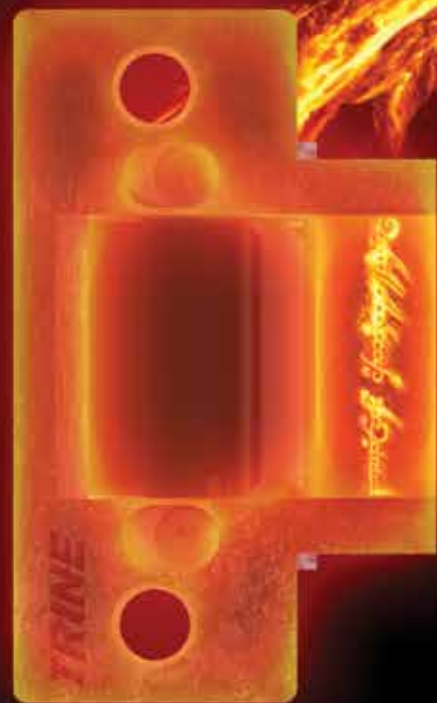
Request more information:  
[www.SecurityInfoWatch.com/12373426](http://www.SecurityInfoWatch.com/12373426)  
[www.adamsrite.com/exits](http://www.adamsrite.com/exits)



**Adams Rite**  
ASSA ABLOY

# THE 323478F-LC KIT

## FIRE RATED CYLINDRICAL LOCK SOLUTION



Redesigned 2-3/4" adjustable ANSI faceplate



234X Configuration



478\*

\*Order the 323478FX-LC when installing on Timely® & Redi® frames.

**ONE STRIKE TO RULE THEM ALL**

**THE SMALLEST FIRE RATED ELECTRIC STRIKE IN THE WORLD**

- 3 Hour Fire Rated
- 1" Total Backset
- 1/8" Horizontal Adjustment
- BHMA Grade 1 - All stainless steel construction
- 12-24 AC & DC - surge & kickback protection



**FORGING NEW SOLUTIONS WITH ELECTRIC STRIKES**

Request Information: [www.SecurityInfoWatch.com/10215438](http://www.SecurityInfoWatch.com/10215438)



# Access Control Solutions

## 1812i and 1802i

Now you can program and operate your Residential 1812i or Commercial 1802i from anywhere, with the DKS mobile app. Both Telephone Entry Systems control up to three entry points, ring multiple phones simultaneously, and connect via VoIP Internet or Cellular. Choose the 1802i for a directory and use of up to two card readers.



1802i Launching Summer 2018



### Virtual Card

Keep access control hassle free with the DKS Virtual Card, turning mobile devices into secure Access Cards. Users simply scan the supplied non-transferable QR code to connect their smartphone to the DKS Card Reader for seamless access when the phone is placed on the device. High security MIFARE compatible cards are also available for those who want a physical card.



### Telephone Entry

Streamline the entry process with the new 1835 and 1837 Telephone Entry Systems, now available with a built-in Card Reader and directory display screen. The integrated Card Reader works just like the original independent Reader, while allowing the Entry System to occupy less real estate.



### Parking Control

The surface mount 1620 Barrier Gate Operator is the ideal formidable barrier in applications where a higher degree of safe vehicle traffic control is desired, but without the expense of digging into the ground for installation.



### DC Gate Operators

For versatility without loss of power, the 9000 series of Commercial DC Gate Operators offers an optional solar power option. Ideal for remote locations where power is not available, the solar panel recharges the battery power with the strength to move even large gates.



Parking Control Access Control Telephone Entry Gate Operators

Member: AFA, DASMA, NAA, IDA, NOMMA, NPA, SIA, SSA, CANASA


for more information [doorking.com](http://doorking.com)

800-673-3299 [info@doorking.com](mailto:info@doorking.com)

Request Information: [www.SecurityInfoWatch.com/10213482](http://www.SecurityInfoWatch.com/10213482)

# BIGBOOK

## THE SECURITY INDUSTRY'S PRODUCT GUIDE ■ SPRING 2018

-  **B6** Access Control & Door Hardware
-  **B18** Video Surveillance
-  **B20** Alarms, Intrusion Detection & Perimeter
-  **B22** Power Supplies
-  **B24** Installation Tools
-  **B25** Keys, Key Control & Automotive
-  **B26** Business Management Software

Advertiser Name	Page	WebSite URL
ADI Global Distribution	B16	www.securityinfowatch.com/10216133
Akron Hardware	B15	www.securityinfowatch.com/12071932
Altronix Corporation	B21	www.securityinfowatch.com/10212790
ASSA ABLOY	B13	www.securityinfowatch.com/10212899
ConnectWise	B23	www.securityinfowatch.com/12305860
D&D Technologies	B19	www.securityinfowatch.com/10929523
Detex Corporation	B4	www.securityinfowatch.com/10213445
DKS DoorKing Systems	B3	www.securityinfowatch.com/10213482
DynaLock Corporation	B11	www.securityinfowatch.com/10213515
Geutebrück	B17	www.securityinfowatch.com/10215722
Johnson Controls Security Products	B26	www.securityinfowatch.com/10547368
Monitoring America Alarm Co-op	B20	www.securityinfowatch.com/10490593
Platinum Tools	B14	www.securityinfowatch.com/10216200
SDC-Security Door Controls	B27	www.securityinfowatch.com/10214991
Security Lock Distributors	B5, B28	www.securityinfowatch.com/10215009
Select Products	B22	www.securityinfowatch.com/10215943
STRATTEC Security Corp.	B25	www.securityinfowatch.com/10215947
Top Notch	B7	www.securityinfowatch.com/12129499
Trine Access	B2	www.securityinfowatch.com/10215438
Yale Commercial	B9	www.securityinfowatch.com/10215674

This index is supplied as a service to our readers. The publisher assumes no liability for omissions or errors.

**PUBLISHED BY**  
SOUTHCOMM  
BUSINESS MEDIA, INC.  
PO Box 803  
1233 Janesville Ave  
Fort Atkinson WI 53538  
920-563-6388; 800-547-7377



**THE BIG BOOK**  
is a supplement to *Locksmith Ledger*,  
*Security Dealer & Integrator* and  
*Security Technology Executive* magazines.

**EDITORIAL**

**Editor, The Big Book** | Paul Rothman  
PO Box 366  
1595 Peachtree Parkway, Suite 204  
Cumming, GA 30041  
800-547-7377, ext. 2226  
prothman@SouthComm.com

**Editorial director** | Steve Lasky  
800-547-7377, ext. 2221  
slasky@SouthComm.com

**Editor, Locksmith Ledger** | Gale Johnson

**Editor, Security Dealer & Integrator** | Paul Rothman

**Editor, Security Technology Executive** | Steve Lasky

**Editor, SecurityInfoWatch.com** | Joel Griffin

**SALES**

**Group publisher** | Nancy Levenson-Brokamp  
800-547-7377 ext. 2702  
nbrokamp@SouthComm.com

**Northeast US & East Canada**  
**SD&I, STE, SecurityInfoWatch** | Janice Welch  
800-547-7377 ext. 6288  
jwelch@SouthComm.com

**Midwest**  
**Locksmith Ledger, SD&I, STE, SecurityInfoWatch** | Brian Lowy  
800-547-7377 ext. 2724  
briowy@SouthComm.com

**Western US & Western Canada**  
**SD&I, STE, SecurityInfoWatch** | Bobbie Ferraro  
310-800-5252  
bferraro@SouthComm.com

**Display/classified** | Kristy Dziukala  
800-547-7377 ext. 1324  
kdziukala@SouthComm.com

**PRODUCTION**

**Production manager** | Jane Pothlanski  
jpothlanski@SouthComm.com

**Art director** | Bruce Zedler  
bzedler@SouthComm.com

**Audience development manager** | Ella Dean  
edean@Southcomm.com

**SOUTHCOMM INC.**

**Chief Executive Officer** | Blair Johnson

**Chief Financial Officer** | Bob Mahoney

**EVP** | Gloria Cosby

**VP/Group Publisher, Public Safety** | Greg Toritto

**VP Events, Public Safety & Security** | Ed Nichols

**VP, Marketing** | Gerry Whitty

**VP, Production Operations** | Curt Pordes

**VP, Technology** | Eric Kammerzelt

**Subscription Customer Service**  
Toll-Free 877-382-9187; Local 847-559-7598  
Circ.SecDealer@omeda.com

**Article Reprints** | Brett Petillo  
Wright's Media 877-652-5295, ext. 118  
bpetillo@wrightsmedia.com

Printed in the USA. Copyright 2018 SouthComm Business Media, LLC. All rights reserved. No part of this publication may be reproduced or transmitted in any form or by any means, electronic or mechanical, including photocopy, recordings or any information storage or retrieval system, without permission from the publisher. SouthComm Business Media, LLC does not assume and hereby disclaims any liability to any person or company for any loss or damage caused by errors or omissions in the material herein, regardless of whether such errors result from negligence, accident or any other cause whatsoever. The views and opinions in the articles herein are not to be taken as official expressions of the publishers, unless so stated. The publishers do not warrant, either expressly or by implication, the factual accuracy of the articles herein, nor do they so warrant any views or opinions offered by the authors of said articles.



**Same-day shipping from our massive, in-stock inventory.**



If you need it, we'll get it there—fast. We'll even drop ship orders with just your branding on the shipping label and packing slip.

Fast shipping, AND the knowledge and expertise to meet your needs, only at Security Lock Distributors.



**WWW.SECLOCK.COM**  
**800-847-5625**



Request information: [www.SecurityInfoWatch.com/10215009](http://www.SecurityInfoWatch.com/10215009)



**Sustainable Access Control:  
EcoFlex and EcoPower from  
ASSA ABLOY**

EcoFlex™ technology, available in electrified mortise locks and exit trim from ASSA ABLOY Group brands Corbin Russwin and SARGENT, represents a significant innovation in door opening technology.

EcoFlex® electrified mortise locks reduce energy consumption up to 96% and EcoFlex™ electrified exit trim up to 95%, as certified by GreenCircle®. The EcoFlex solutions are ideal for electronic access control applications – whether they are used as stand-alone devices or as part of an integrated access control system.

EcoPower, from ASSA ABLOY Electronic Security Hardware, is a highly efficient power supply designed to work with low-power electrified locks. The small, 4-inch cube access control power supply reduces standby power consumption to only 8.5mW (0.0085W), a 99-percent decrease compared to current linear and switching power supplies.

When used together, the EcoFlex and EcoPower solution is GreenCircle Certified to reduce power consumption up to 99 percent in both fail-safe and fail-secure applications, from up to 20W to 0.3W. This energy-efficient solution offers a cost-effective alternative to traditional solutions and confirms ASSA ABLOY's commitment to bringing more sustainable security solutions to the market.

Request more information: [www.SecurityInfoWatch.com/12072782](http://www.SecurityInfoWatch.com/12072782)

[www.intelligentopenings.com/ecoflex](http://www.intelligentopenings.com/ecoflex)



**SDC's Auto EntryControl Low  
Energy Swing Door Operator**

SDC's Auto EntryControl™ Low Energy Swing Door Operator provides hands-free, low-power point of entry door control to help meet all US and Canadian ADA requirements for door installations in retail storefronts, office buildings, campuses and healthcare facilities.

The state-of-the-art microprocessor-based unit is self-tuning and self-learning while offering non-handed operation, full mechanical stops and a variety of interface options for sensors, push-plates, fire alarms and electrified locks.

- Knowing act to activate
- 120v, low energy, Quiet!
- Specify push or pull arm
- Spindle included
- Slotted back-plate for easy mounting
- One button programming...
- Meets ANSI standard for ADA Compliance
- Auto-senses degree of door swing
- Hard stops adjustable (if needed)
- On board 24v output & sequencer for mags/strikes
- Auto IR, presence sensor (not activation)
- Easy add and power for wireless controls
- Order with SDC brand ADA switches & bollards



Find out more at the links below or call 1-800-413-8783.

Request more information: [www.SecurityInfoWatch.com/12303863](http://www.SecurityInfoWatch.com/12303863)

[www.sdcsecurity.com/Auto-EntryControl](http://www.sdcsecurity.com/Auto-EntryControl)

**Paxton's Net2 PaxLock**

Net2 PaxLock is a battery-powered access control unit in a secure door handle, combining secure wireless technology with a stylish proximity reader. Net2 PaxLock comes ready to install with a C Keyway lock or alternatively to fit with an SFIC lock, with two handle designs available; Eclipse and Galaxy. Simple to use and fast to fit with a self-contained power source, this is an ideal solution for internal doors.

Net2 PaxLock communicates with Paxton's user-friendly and intuitive Net2 access control software at a central point via a secure, low-power radio link, and events are reported back to the server in real-time.

Communication between Net2 PaxLock and the Net2 server is done wirelessly through Net2Air and the Net2Air Ethernet bridges, providing all the advantages of a wireless access control system. Each Net2Air bridge can detect Net2 PaxLock units within an average wireless radius range of up to 50ft (15m).

- Secure, simple door handle solution that can be fitted in minutes
- Full battery management system with low battery alerts and easy-change AA batteries
- Compatible with EM and Paxton proximity tokens
- Key override option
- Ideal for retrofit installation
- Contains Genuine HID Technology™

For more information about the Net2 PaxLock, visit the links below.

Request more information:  
[www.SecurityInfoWatch.com/12410495](http://www.SecurityInfoWatch.com/12410495)

<http://paxton.info/3301>



**Cellular Access Control  
from DoorKing**

**Save Money!** DKS Cellular access control provides an alternate to standard POTS (Plain Old Telephone Service) phone lines that are expensive to install and maintain, and are becoming increasingly scarce and unreliable for data transfer via obsolete modem technology.

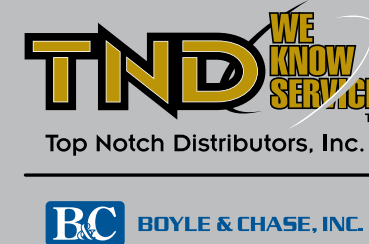
The cellular control box eliminates the need for expensive long wire runs (trenching) that typically provide voice and data communications. DKS Cellular control boxes easily connect to DoorKing 1800, Access Plus and 1830 Series telephone entry systems – replacing old fashion POTS telephone lines and eliminating the need for RS232, RS485, Ethernet and other expensive wiring means.

Typical business phone lines run between \$60 to \$120 per month, PLUS the expense of long distance charges. Using VoIP? You still need a VoIP provider (another monthly expense) plus the cost of trenching to run ethernet cabling to the entry system.

DKS Cellular control boxes eliminate the need for costly trenching and long wire runs, and in many instances the monthly cellular fees are less than that of an old fashion (soon to be obsolete) business land line.

Request more information:  
[www.SecurityInfoWatch.com/12140523](http://www.SecurityInfoWatch.com/12140523)

[www.doorking.com](http://www.doorking.com)



800.233.4210  
[www.topnotchinc.com](http://www.topnotchinc.com)  
24/7 online access

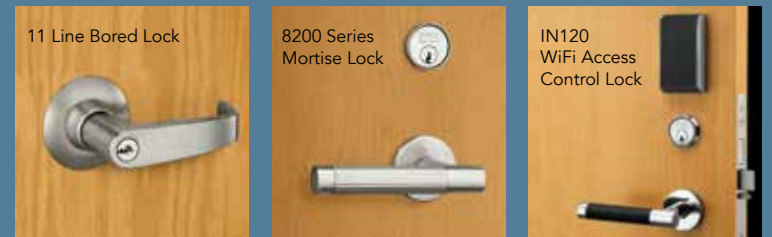
**Master the ins  
and outs of security**

**SARGENT  
ASSA ABLOY**



80 Series Exit Device

**Door hardware that  
takes security as  
seriously as you do**



11 Line Bored Lock

8200 Series Mortise Lock

IN120 WiFi Access Control Lock

Top Notch Distributors/Boyle & Chase, the Industry Standard for Architectural Hardware, offering commercial, residential and electronic access control solutions is your source for SARGENT hardware solutions. Be in control of your facility's hardware, not constrained by it and start every morning knowing you have complete command of your facility's security with SARGENT.



Request information: [www.SecurityInfoWatch.com/12129499](http://www.SecurityInfoWatch.com/12129499)

## DynaLock Series 3101C-G2 Delayed Egress Lock



The redesigned, second-generation DynaLock Series 3101C-G2 Delayed Egress Lock incorporates a new, enlarged LED lock status indicator arrangement. Rather than a single, T-1 3/4 bi-color LED mounted to the stamped aluminum housing cover of the original 3101C, the 3101-G2 utilizes a high-brightness SMT LED status indicator array, which projects through a wide translucent lens in the face of a new injection-molded polymer housing cover.

This new flame-proof polymer cover comes in a standard matte black finish identical to our armature housing and features a recessed US28 satin aluminum finish faceplate. This faceplate may also be finished to match any of our optional special architectural finishes when a lock is ordered as such.

The 3101C-G2 also adds an optional new, redundant delay egress alarm relay output (AAO – Auxiliary Alarm Output Option). It provides an isolated set of SPDT, Form C output contacts, which duplicate the function of the standard Delay Egress Monitor output. All other mechanical, electronic and templating attributes remain unchanged from the original 3101C. Models configured for single and double out-swinging, double egress and single in-swinging doors are offered and backed by our DynaLife® PLUS lifetime warranty.

Request more information:

[www.SecurityInfoWatch.com/12410532](http://www.SecurityInfoWatch.com/12410532)

[www.dynalock.com](http://www.dynalock.com)



## STid Mobile ID Online Portal

Meet the challenge of matching high-security policy with intuitive access control!

STid Mobile ID® Online Portal is the first user card management portal to comply with even the most demanding policy requirements (including GDPR and PIPEDA). Easy to manage, it can both issue and revoke virtual access cards remotely and ensure data privacy and protection using recommended encryption and authentication methods.

Ultimately flexible, it is built to be compliant with the highest security standards of our clients' business and it perfectly interfaces with an existing system. Just let your policy dictate where sensitive data must be stored: on your own internal server or in a secured STid cloud.

Welcome to high-security and flexibility – in a single solution.

Many benefits:

- Dynamic & remote rights management: creation, revocation and update
- Simplified management of occasional visitors and VIPs
- Unlimited reallocation of private ID from revoked cards
- Secure Web portal and secure exchanges - HTTPS & TLS
- Database encryption and fragmentation
- Simplified visitor management with unlimited reuse of revoked badges
- Alignment with our clients' value chain via sub-account management
- Different levels of rights for each account allowing multiple users to work simultaneously on the same account
- Platform hosted on STid server or on your server
- Customizable user cards
- Web services: secure link to your database

Request more information:

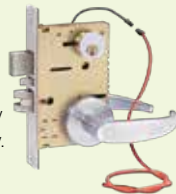
[www.SecurityInfoWatch.com/12410588](http://www.SecurityInfoWatch.com/12410588)

<http://stid-security.com>



## SDC Electrified Z7870/80 Mortise Lockset Hybrid

SDC introduces the Electrified Z7870/80 Mortise Lockset Hybrid with Manual Deadbolt for privacy. Mortise Lockset Hybrids are locked from the outside only and are unlocked by an access control or key from the outside to maintain privacy. Turning the inside lever retracts the deadbolt and latch for uninhibited egress at all times.



These fully featured locksets ensure that the door stays latched even when unlocked, maintaining fire door integrity and comply with all national building and fire life safety code requirements for use on fire-rated doors.

FEATURES

- SDC fully featured lockset with complete application flexibility for new construction or retrofit of major brand mechanical locks
- New or retrofit application, replaces most mechanical locks
- Field-selectable handing
- Order with SDC Trim or Less Trim. Compatible with Schlage Trim
- Key latch retraction
- Field selectable mode (failsafe/failsecure) (7830/7832/7850/7852/7835 only)
- Field selectable function (7830/7832/7850/7852/7835 only)
- Field selectable voltage (7830/7832/7850/7852/7835 only)
- Full monitoring capability (optional):
  - Request-to-Exit, SPDT
  - Door position status, SPDT (7830/7832/7850/7852/7835 only)
  - Latched & locked status, SPDT (7830/7832/7850/7852/7835 only)
  - Deadbolt status (7870/7872/7880/7882 only)
  - Latch status (7870/7872/7880/7882 only)

For more details, visit the links below or call 1-800-413-8783.

Request more information:

[www.SecurityInfoWatch.com/12400308](http://www.SecurityInfoWatch.com/12400308)

[www.sdcsecurity.com/MortiseLockHybrid](http://www.sdcsecurity.com/MortiseLockHybrid)



## ASSA ABLOY Locking Solutions with Mobile Access® Capability



ASSA ABLOY offers HID Mobile Access® support across a broad range of access control locks from brands Corbin Russwin and SARGENT. This enables the ability to use phones and other mobile devices enabled with Bluetooth® Smart and NFC credentials with the IN120 WiFi lock, Access 700® and Passport 1000 PoE and WiFi locks, and the SE LP10 Integrated Wiegand lock.

HID Mobile Access® powered by Seos® provides an easy, intuitive solution for issuing, delivering and revoking digital credentials on iOS and Android mobile phones and tablets with Bluetooth® Smart and/or NFC technology. Offering comprehensive security, it protects identity data

and keeps over-the-air communications between mobile devices and locks private.

According to Peter Boriskin, Director of Product Management, Electronic Access Control, ASSA ABLOY Americas: "Mobile-enabled locks allow customers to extend the convenience and security of mobile access to a wider variety of applications, while maintaining interoperability with their existing credential base."

Mobile-enabled locks from ASSA ABLOY Group brands are fully compatible with HID Global iCLASS SE® and Seos® cards as well as multiCLASS SE® readers configured for HID Mobile Access®.

Request more information: [www.SecurityInfoWatch.com/12070107](http://www.SecurityInfoWatch.com/12070107)

[www.intelligentopenings.com](http://www.intelligentopenings.com)



# Unlock what's next.



nexTouch™

Introducing the all-new Yale nexTouch™ Sectional Mortise Keypad Lock. With even more options for new construction and retrofit opportunities, the nexTouch family of products offers an easy and affordable upgrade to electronic access control in a variety of commercial facilities.

- ▶ **ANSI/BHMA Grade 1** certification ensures strength & reliability
- ▶ Available with choice of **capacitive touchscreen** or **pushbutton keypad** for interior or exterior applications
- ▶ **Easy installation** and **voice-guided programming** make setup simple
- ▶ **Perfect for** retrofitting doors with mortise preparations
- ▶ Start with a stand-alone and upgrade to the **Yale Multi-Family or Small Business solution** as security requirements grow and change

When you need an innovative, worry-free access control solution, Yale Works for You<sup>SM</sup>.

**Learn how you can take the next step in security**

[www.yalelocks.com/nexTouch](http://www.yalelocks.com/nexTouch)

## Adams Rite EX Series Exit Devices

The newly designed EX Series Exit Devices by Adams Rite is complete with four models offering customers sleek, flexible, installation-friendly solutions.

The new EX Series includes the **EX88 Interlocking Rim Exit Device**, with a robust and unique bolt design that interlocks the door to frame for enhanced strength and durability; the

**EX89 Pullman Rim Exit Device**, which is compatible with Adams Rite preload capable 74R1 Electric Strike; the **EX76 CVR Exit Device**, with concealed adjustable rods and latching assemblies designed for easy installation; and the **EX80 Dummy Push Bar**, whose flexible design comes standard with two monitoring switches and is field selectable for active or inactive configuration.

The EX Series features modern, contoured design with matching metal end caps and no visible hardware from the back once installed. Complimentary trim is available to create a beautiful finish. Unique features, including impact bumpers, return control and vertical guides provide smoother operation and sound dampening for a superior user experience.

The adjustable mounting foot and mounting plate as well as provided adhesive templates assist with device mounting and reduce installation time. The EX Series is suitable for high-, mid- and low-traffic openings in aluminum, hollow metal and wood applications.



**ASSA ABLOY**

**Request more information:**  
[www.SecurityInfoWatch.com/12373426](http://www.SecurityInfoWatch.com/12373426)  
[www.adamsrite.com/exits](http://www.adamsrite.com/exits)

## Detex A019 Series of Low Energy Automatic Operators

The Detex A019 Series of Low Energy Automatic Operators are economical, easy to install, heavy-duty products for high use and high abuse applications.

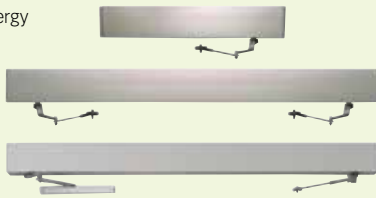
They meet requirements for ANSI/BHMA A156.9 (American National Standard for Power Assist and Low Energy Power Operated Doors) and provide standard features that meet the requirements of the American Disabilities Act.

Operators are available for three different door applications: Single Doors (AO19-1); Double Doors (AO19-2); and Double Egress Doors (AO19-3).

The reliable AO19 offers all the features you expect in an automatic door operator at no extra cost. All operators feature Power Close, adjustable Delayed Activation for sequenced vestibule doors, Reverse On Obstruction, adjustable Closing Speed, Push & Go, 3-way On/Off/Hold switch for ease of service and setup, and Electric Lock Relay including 300ma AC/DC.

The AO19 can be integrated into any existing system, including access control, fire, request to exit, computer signal devices and delayed egress.

Detex is also proud to offer the AO19 in an EasyKit. The Automatically Operated Doors (AOD) EasyKit provides a system that includes the Advantex Latch Retraction exit device and the AO19 Low Energy Automatic Operator with a built-in power supply. The Automatic Operator is pre-wired with the latch retraction power supply, making installation fast and easy. All hardware items, plus riser and wiring diagrams, are provided with one easy-to-order, easy-to-specify part number.



**Request more information:**  
[www.SecurityInfoWatch.com/12410577](http://www.SecurityInfoWatch.com/12410577)  
[www.detex.com](http://www.detex.com)



## IN220 Power over Ethernet Locks from ASSA ABLOY



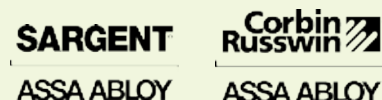
Available from ASSA ABLOY Group brands Corbin Russwin and SARGENT, the IN220 Power-over-Ethernet (PoE) lock combines superior aesthetics with the energy efficiency and streamlined architecture of PoE access control solutions for a cost-effective, sustainable solution that leverages existing network infrastructure for enhanced security and easier installations.

The IN220 uses standard IEEE 802.3af PoE-enabled network infrastructure for both power and data, streamlining the installation process, eliminating proprietary equipment, and enabling real-time communication.

The lock also significantly reduces standby power consumption compared to traditional access control solutions and reduces materials by combining several separate components into a single lock.

Featuring HID® multiCLASS SE® technology, the IN220 supports a wide range of credential types and HID Mobile Access® powered by Seos® for use with mobile devices with Bluetooth® Smart and/or NFC technology. A privacy button enables local lockdown and shelter in place as well as privacy functionality for applications such as restrooms. Built with integrated ANSI/BHMA Grade 1 hardware, all IN220 locks suite with the IN Series of locks and are available in cylindrical lock, mortise lock and exit device configurations as well as a wide range of finishes and decorative levers.

**Request more information:** [www.SecurityInfoWatch.com/12172887](http://www.SecurityInfoWatch.com/12172887)  
[www.intelligentopenings.com/IN220](http://www.intelligentopenings.com/IN220)



## SDC S6000-101 Delayed Egress

SDC's Exit Check® S6000-101 All-In-One delayed egress panic and fire exit device comes with controller and delayed egress logic all integrated into the bar.



Available in rim mount, mortise and vertical rod (surface mount & concealed) configurations, the All-In-One is perfect for retail loss prevention, pedestrian control, wandering patient control and nursery infant protection.

Audible alarm and multi-colored LED provide alert to unauthorized egress when initiated by depressing the push pad. A key switch provides reset and bypass control. In a life safety emergency, the device will immediately unlock upon loss of power or when powered by a fire control supervised power supply.

The All-In-One is designed to provide code compliance at a competitive price

### Benefits:

- Eliminates need for separate delayed egress controller
- Reduces door and frame prep
- Perfect for exit device retrofits and upgrades

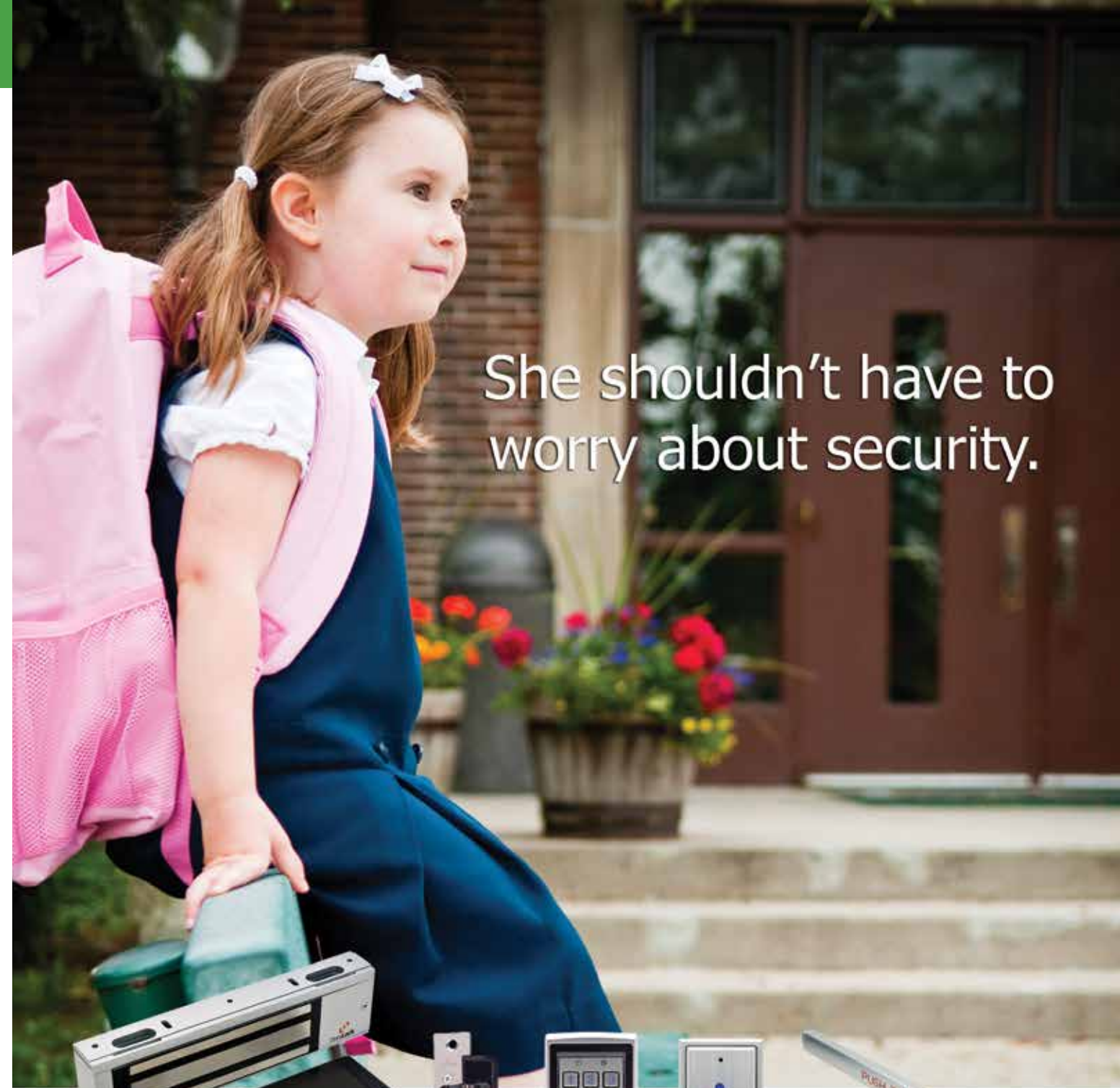
### Series Features:

- 15-second exit delay, 1 or 2 second nuisance delay
- Built-in visual and audible annunciation
- Single or tandem doors
- Key reset, bypass
- Field-selectable 1 to 30 second request-to-exit, anti-tailgate and door prop alarm
- UL Listed

point vs. other delayed egress solutions, perfect for tight budgets. And, the All-In-One is built on an open platform for ultra-compatibility and operates with low power consumption, requiring less than 1 amp from your power supply.

For more details, visit the links below or call 1-800-413-8783.

**Request more information:**  
[www.SecurityInfoWatch.com/12202962](http://www.SecurityInfoWatch.com/12202962)  
[www.sdcsecurity.com/S6000-101](http://www.sdcsecurity.com/S6000-101)



**Choose code-compliant electronic security and access control products from DynaLock Corp. and she won't have to.**

Integrated electromagnetic and electromechanical locking systems, along with ADA-compliant access and egress control products, designed to withstand the rigors of institutional use. Since 1989, whether for perimeter high-security or interior traffic control, DynaLock has provided the solutions and the expertise to deploy them, to meet the most critical life safety and security needs of your facility.



[www.dynalock.com](http://www.dynalock.com)

Request information: [www.SecurityInfoWatch.com/10213515](http://www.SecurityInfoWatch.com/10213515)

**Alarm Controls  
AES-300  
Electric Strike**

Coming soon in 2018, the flexible Alarm Controls AES-300 Electric Strike offers real value and innovation in one compact product.

With 1,000 lbs. static strength and 50 ft-lbs. of dynamic strength, this small but strong strike body design eliminates the need to cut out the dust box during installation, which makes retrofitting a breeze.

Each AES-300 complete kit includes the strike body and three faceplates to accommodate cylindrical locksets with up to 5/8" throw.

With up to 1/4" horizontal adjustability, the AES-300 is ideal for cylindrical locksets with up to 5/8" throw in medium duty applications.

And with nearly unlimited customization options, look to the Alarm Controls Custom Solutions team to help build exactly what's needed to satisfy your access control needs.

Learn more about this and the full line of Alarm Controls electric strikes and additional products at the links below.

**Request more information:**  
[www.SecurityInfoWatch.com/12385031](http://www.SecurityInfoWatch.com/12385031)  
[www.alarmcontrols.com](http://www.alarmcontrols.com)



**ASSA ABLOY Electronic  
Security Hardware**

HES and Securitron have united as ASSA ABLOY Electronic Security Hardware, bringing together the best of both brands: the innovation, strength and service of HES with the durability, quality and no-fault warranty of Securitron.

Founded 40 years ago, HES and Securitron established global reputations by developing innovative electric strikes and electromagnetic locks.

While all the products you know and love remain available, the product portfolio will expand with increased offerings in cabinet locks, power supplies and low power locking solutions.

HES and Securitron are advancing security, innovation and convenience together as ASSA ABLOY Electronic Security Hardware.

**Request more information:** [www.SecurityInfoWatch.com/12381564](http://www.SecurityInfoWatch.com/12381564)  
<http://assaabloyesh.com>



**IN220 Power over Ethernet  
Locks from ASSA ABLOY**



Available from ASSA ABLOY Group brands Corbin Russwin and SARGENT, the IN220 Power-over-Ethernet (PoE) lock combines superior aesthetics with the energy efficiency and streamlined architecture of PoE access control solutions for a cost-effective, sustainable solution that leverages existing network infrastructure for enhanced security and easier installations.

The IN220 uses standard IEEE 802.3af PoE-enabled network infrastructure for both power and data, streamlining the installation process, eliminating proprietary equipment, and enabling real-time communication. The lock also significantly reduces

standby power consumption compared to traditional access control solutions and reduces materials by combining several separate components into a single lock.

Featuring HID® multiCLASS SE® technology, the IN220 supports a wide range of credential types and HID Mobile Access® powered by Seos® for use with mobile devices with Bluetooth® Smart and/or NFC technology. A privacy button enables local lockdown and shelter in place as well as privacy functionality for applications such as restrooms. Built with integrated ANSI/BHMA Grade 1 hardware, all IN220 locks suite with the IN Series of locks and are available in cylindrical lock, mortise lock and exit device configurations as well as a wide range of finishes and decorative levers.

**Request more information:** [www.SecurityInfoWatch.com/12172887](http://www.SecurityInfoWatch.com/12172887)  
[www.intelligentopenings.com/IN220](http://www.intelligentopenings.com/IN220)



**Yale nexTouch Sectional  
Mortise Lock**

Expanding the Yale nexTouch™ product line for even more applications, the new nexTouch Sectional Mortise Keypad Lock provides robust security for a variety of applications within commercial and multi-family buildings.

Just like the original cylindrical nexTouch lock, the new mortise lock platform is ANSI/BHMA Grade 1 certified with keypads offered in a capacitive touchscreen or ADA-compliant pushbutton versions. Other features include privacy mode with Door Position Sensor, optional security deadbolt, 9V battery backup, support of up to 500 unique user codes and more.

A truly scalable solution, nexTouch can be used as a stand-alone keypad lock that uses a PIN code to manage access; can easily be upgraded to utilize Data-on-Card technology as part of the Yale Multi-Family Solution; or integrated with ZigBee or Z-Wave-capable alarm systems in small business environments. The ability to install a single lock that can utilize multiple technologies enables facilities to minimize their investment costs while providing an easy migration path to more connected systems.

Yale's innovative new product offers many benefits for building owners and developers, including reduced maintenance, easy management of access rights, and increased security. When you need the perfect balance of modern technology and advanced security, Yale Works for You™.

**Request more information:**  
[www.SecurityInfoWatch.com/12410794](http://www.SecurityInfoWatch.com/12410794)  
[www.yalelocks.com/nexTouch](http://www.yalelocks.com/nexTouch)



**2 Ways to  
Wireless**



Leverage Your  
IT Infrastructure



Leverage Your  
Security  
Infrastructure

**Increase security  
quickly, easily and  
affordably with your choice  
of wireless technologies.**

Shown: IN Series lock,  
available with Aperio®,  
PoE, or WiFi technology.

Copyright © 2017 ASSA ABLOY Sales and Marketing Group Inc.; all rights reserved. Reproduction in whole or in part without the express written permission of ASSA ABLOY Sales and Marketing Group Inc. is prohibited.

Wireless locks are undoubtedly the easiest, most cost-effective way to bring access control deeper into a facility. Choose the wireless technology that works best for you — to maximize your existing infrastructure and secure more openings.

**Learn more: [IntelligentOpenings.com/wireless](http://IntelligentOpenings.com/wireless)**



The global leader in  
door opening solutions

Request information: [www.SecurityInfoWatch.com/10212899](http://www.SecurityInfoWatch.com/10212899)

## SDC's MLR Z7600 Motorized Latch Retraction Mortise Locksets

SDC's MLR Z7600 Series Mortise Locksets are designed for the access control of openings in commercial, industrial and institutional facilities where code compliance, dependable operation and resistance to physical abuse is required.

Ideal for automatic door operator applications, they replace most major brand mechanical locks in new or retrofit applications.

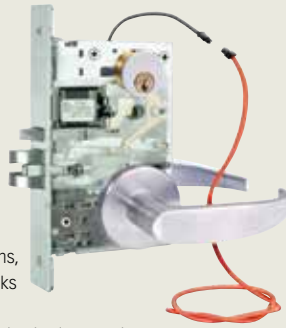
MLR Mortise Locksets ensure the door stays latched even when unlocked, perfect for use on fire-rated doors to maintain code compliance.

### FEATURES

- Motorized low current operation 620mA inrush, 160 mA holding force @ 24VDC
- SDC fully featured lockset with complete application flexibility for new construction or retrofit of major brand mechanical locks
- New or retrofit application, replaces most mechanical locks
- Field-selectable handing
- Order with SDC Trim or Less Trim. Compatible with Schlage Trim provided by others
- Key cylinder latch retraction
- Full monitoring capability (Optional)
- Request-to-Exit, SPDT
- MC-4 Door Contact
- Latchbolt status, SPDT

Visit the links below or call 1-800-413-8783.

Request more information:  
[www.SecurityInfoWatch.com/12400315](http://www.SecurityInfoWatch.com/12400315)  
[www.sdcsecurity.com/Z7600](http://www.sdcsecurity.com/Z7600)



## Paxton's Net2 Entry Premium Monitor

The Net2 Entry Premium monitor is the latest addition to Paxton's video door entry range, Net2 Entry. The interior monitor comes with a capacitive glass touchscreen and free concierge management, as well as 25 vivid background themes. Enjoy two-way video communication when used with the exterior Net2 Entry Touch panel. The premium monitor is compatible with Paxton's network access control system, Net2.

**NEW! Personalized Experience.** Add a photo or organization's logo to customize the monitor, and when used with the touch panel it will automatically display the image.

**NEW! Concierge Management.** Free – users can enjoy simple call and site management with broadcast messaging and do not disturb when users are unavailable.

**NEW! Enhanced Call Administration.** Call snapshot captures an image of missed visitors and an event log helps users keep track of calls received and missed.

**NEW! Versatile Design, Suitable for More Sites.** Simple integration with your customer's doorbell, line-out for users with hearing aids, and high contrast themes available to ensure the screen is easy to read.

**Simple to Install.** A true plug-and-play solution for straightforward installation with a Net2 Entry system. The premium monitor is fully supported by Paxton's industry-leading technical support, 5-year warranty and hassle-free returns policy.

To see the new Net2 Entry Premium monitor in action, visit the Paxton website at the link below.

Request more information:  
[www.SecurityInfoWatch.com/12410500](http://www.SecurityInfoWatch.com/12410500)  
<http://paxton.info/3261>



## New! HPH J-Hooks High Performance Hybrid

- Steel with polypropylene over-mold for easy cable slide
- New Snap Lock Retainer firmly secures cables
- Sizes 1" to 4" HPH16 (1") HPH32 (2") HPH48 (3") HPH64 (4")
- Standard, 90 degree Angled, Batwing
- cULus Listed
- RoHS & TIA Compliant
- Plenum Rated

Cable Management for Modern Installs



**PLATINUM TOOLS®**

We Make Connections EZI!™

805.384.2777

[www.platinumtools.com](http://www.platinumtools.com)

Electrical Security Datacom Telecom Residential

Request information: [www.SecurityInfoWatch.com/10216200](http://www.SecurityInfoWatch.com/10216200)

## Yale 6000 Series Exit Device with A-ALR Emergency Exit Option

Featuring the sleek lines of the original Yale® 6000ED Series Exit Device with the complete features of an alarmed exit device, the new A-ALR emergency exit option for the Yale 6000ED is perfect for commercial applications concerned with loss prevention, including retail, hospitality and more. A built-in alarm is powered by a 9V battery and sounds at 90 dB at 10 feet from the device. The highly durable aluminum rail design with ANSI/BHMA Grade 1 certification ensures strength and reliability, and is UL/CUL listed for panic hardware. This product is easily installed or retrofitted onto existing door preps, and comes standard with a 10-year limited warranty.



Request more information: [www.SecurityInfoWatch.com/12385586](http://www.SecurityInfoWatch.com/12385586)  
[www.yalelocks.com](http://www.yalelocks.com)

Request more information: [www.SecurityInfoWatch.com/12385586](http://www.SecurityInfoWatch.com/12385586)  
[www.yalelocks.com](http://www.yalelocks.com)

## SELECT Geared Continuous Hinge

Do your customers complain about a "problem door?" Chances are, the problem isn't the door, or even the lock. Fix the real problem – worn butt and pivot hinges – and deliver total door service with SELECT geared continuous hinges.

A SELECT geared continuous hinge surpassed 25,000,000 open/close cycles in laboratory testing – equivalent to 60 years of high-traffic use and 10 times beyond BHMA Grade 1 cycle count. That's why we can offer the industry's only Continuous Warranty™, a warranty that never expires. SELECT hinges eliminate hinge repairs forever and are ideal for high-traffic doors in retail storefronts, schools, convention centers, sports facilities, airports and other public buildings. Call 800-423-1174 or visit the links below.

Request more information: [www.SecurityInfoWatch.com/12070571](http://www.SecurityInfoWatch.com/12070571)  
[www.select-hinges.com](http://www.select-hinges.com)



# ASSA ABLOY from Akron Hardware. Nonstop service. No delays.

When you need ASSA ABLOY brands in a hurry, consider this:

- Akron Hardware has the industry's largest distribution footprint
- Order ASSA ABLOY brands today, and they'll ship today
- Place your orders on AKRONLINE, and we pay the FedEx Ground
- Expert customer service that keeps you coming back

For on-time performance, and no shortage of ASSA ABLOY products, Akron is your *best destination!*



AKRON HARDWARE™

800-321-9602 • [www.akronhardware.com](http://www.akronhardware.com)

Let Akron Hardware quote your next ASSA ABLOY project - [quotes@akronhardware.com](mailto:quotes@akronhardware.com)

Request information: [www.SecurityInfoWatch.com/12071932](http://www.SecurityInfoWatch.com/12071932)



**ASSA ABLOY IN120 WiFi Locks**

The IN120 WiFi lock, available from ASSA ABLOY Group brands Corbin Russwin and SARGENT, offers the ease and flexibility of WiFi in a streamlined design. By enabling more cost-effective installations, the IN120 allows facilities to expand access control coverage to more doors. Ideal for use in hard-to-wire locations, it uses standard IEEE 802.11b/g/n Wi-Fi connectivity to connect to the access control system, significantly reducing installation costs and eliminating the need for proprietary equipment. The IN120 utilizes HID® multiCLASS SE® technology to support a wide range of credential types and HID Mobile Access® powered by Seos®. Featuring integrated ANSI/BHMA Grade 1 hardware, the IN120 is available in cylindrical and mortise lock configurations, with black or white reader and a broad range of finishes and levers.

Request more information:  
[www.SecurityInfoWatch.com/12070096](http://www.SecurityInfoWatch.com/12070096)  
[www.intelligentopenings.com/IN120](http://www.intelligentopenings.com/IN120)



**SDC's Hazardous Door Access & Egress Security Solutions**

SDC's UniFLEX™ 45F Fire Rated Electric Strike is the best 3-hour fire rated strike on the market.

- Durable, stainless steel die cast body for corrosion resistance
- UL 10C, 3 Hr fire rated (fail-secure only)
- Impact-resistant, non-metallic, anti-static material
- No moving parts, maintenance free
- 1.5" mushroom button (red or green)



SDC's Explosion Proof EMLock eliminates sparks in hazardous plant locations (EP17624), for applications where flammable vapors are a concern.

- UL listed for use in hazardous locations CLASS 1, DIVISION 2
- Corrosion proof
- Explosion proof epoxy sealed to eliminate sparks
- No moving parts, virtually maintenance free
- Door status sensor
- 628 clear anodized aluminum housing

The EP499 Explosion Proof Series Exit Switch works in hazardous and corrosive environments. They are impact-resistant, non-metallic, anti-static material.

- Silicone gasket on enclosure and actuator
- No moving parts, virtually maintenance free
- Corrosion proof with F1 UV protection
- 1.5" mushroom button (red or green)
- Explosion protected contact blocks
- Clearance for 3/4" bottom feed NPT fitting



For more details, visit the links below or call 1-800-413-8783.

Request more information: [www.SecurityInfoWatch.com/12410507](http://www.SecurityInfoWatch.com/12410507)  
[www.sdcsecurity.com/HazardDoor](http://www.sdcsecurity.com/HazardDoor)

**IP PRO Access Control from SDC**

Bring safe, secure, easy to implement door access control to the network's edge without the headaches of costlier, more complicated enterprise solutions. SDC IP Pro™ IP-based Single Door Access Controllers are now available with two Ethernet ports for interfacing with an additional IP device. They allow expansion from one standalone door up to a 100-door "grid."



The additional Ethernet port allows IT departments to save a port when connecting an extra door at the server. Installers can eliminate a long cable run when connecting an additional IP device. Every IP Pro™ Controller comes with secure, built-in software to manage up to 32 doors from any standard web browser to allow for real-time monitoring, user management and audit trail up to 5,000 events.

- Powered by ordinary Ethernet network cables
- Secure, built-in browser-based software, no software to install
- Manage from any PC and standard web browser
- Connects to existing network infrastructure
- Compatible with standard Weigand readers

Or, download our FREE PLUS PC-Client software to control up to 100 doors from a single PC. IP Pro™ PLUS is a role-based access control software suite with different interface modules – PLUS Hardware is used by the installer to set up controllers, doors and user profiles; PLUS Manage is used by system administrators to facilitate database changes required on a day-to-day basis, and offers various reporting tools; PLUS Server is used by system administrators to perform specialized tasks, such as database backups, firmware updates, importing/exporting users. Live System events can be monitored from either module.

For more details, visit the links below or call 1-800-413-8783.

Request more information:  
[www.SecurityInfoWatch.com/12168131](http://www.SecurityInfoWatch.com/12168131)  
[www.sdcsecurity.com/ippro](http://www.sdcsecurity.com/ippro)



**Joining the Geutebrück Team will Help You Win 4 Ways:**



1. Escape the Race-to-the-Bottom price war
2. Ease your struggle to Differentiate
3. Increase your Product Margins
4. Reduce or eliminate your Competition



**Video Security**

**Value Imaging**



**GEUTEBRÜCK**

VALUE IMAGING VIDEO SECURITY

**Over 45 Years Of German Engineered Video Solutions known for Speed, Performance and Reliability**

**Contact us and find your WINNING IMAGE!**

**GEUTEBRÜCK USA**

Regional Sales and Support – Nationwide  
 Info@GeutebruckUSA.com | Main: (813) 586-1000  
[www.GeutebruckUSA.com](http://www.GeutebruckUSA.com)

Request information: [www.SecurityInfoWatch.com/10215722](http://www.SecurityInfoWatch.com/10215722)

*Nobody Delivers more Brands than ADI*

**MORE WAYS TO SHOP THAN EVER BEFORE!**  
 More ways to decide how, when and where to stock up!

- BRANCH**: Thousands of products in stock every day!
- CALL**: 1-800-233-6281
- ONLINE**: @adigital.us
- MOBILE**: Get the ADI app for iPhone & Android

- ✓ Over 100 fully stocked branches across North America
- ✓ 24/7 product pickup and rapid delivery
- ✓ Online shopping and account access
- ✓ Free branch pickup when you buy online
- ✓ Extensive catalogs and monthly sales promotions
- ✓ ADI Expo training series and tradeshows
- ✓ Systems sales and integration support
- ✓ Over 1,500 training opportunities annually

The leaders. call 1-800-233-6281 • The Systems Sales & Support. call 1-888-234-7321 • Do-It-Yourself. call @adigital.us/usa

Request information: [www.SecurityInfoWatch.com/10216133](http://www.SecurityInfoWatch.com/10216133)

## Uniview 5MP StarView Series

Uniview has launched 5MP StarView series – higher resolution products with excellent Starlight illumination sensitivity. The 5MP series applies 1/2.7" backside illumination technology sensor to deliver enhanced low light sensitivity and wide field of view. It also features a built-in F1.2 large aperture lens to radically improve the camera's light gathering capability.



Through years of accumulated experience, our exclusive U-ISP technology can guarantee superior image quality through enhanced Signal to Noise ratio, unrivaled image definition, and especially by reducing smearing of moving objects in low light.

We also gave high priority to ease of use by creating a one-key-stroke starlight mode which works perfectly under static scenes. One more simple keystroke sets a low motion blur mode to produce better images of moving objects.

### Features:

- Ultra 265, deep compression technology to reduce up to 75% storage space
- Embedded smart algorithm
- IK10 vandal resistant
- Wide voltage range of +/- 25%
- Full metal body, IP67 waterproof
- Built-in microphone

### Models:

- Fixed lens: IPC2125SR3-ADUPF/IPC325ER3-DUVPF/IPC3615ER3-ADUPF
- 2.7-13.5mm, 5X Motorized Lens: IPC3235ER3-DUVZ/IPC3635ER3-DUPZ/IPC2325EBR5-DUPZ

### About Uniview:

Uniview is the leading supplier of video surveillance products and solutions. With more than 12 years experience in IP video surveillance, Uniview now is the 7th-largest manufacturer worldwide (IHS Markit). Uniview has complete IP video surveillance product lines including IP cameras, NVR, transmission device, storage, VMS and display devices which feature innovative and leading technologies such as Ultra 265, smart analysis, 4K, starlight etc.

Request more information:  
[www.SecurityInfoWatch.com/12410581](http://www.SecurityInfoWatch.com/12410581)  
[www.uniview.com](http://www.uniview.com)



## Theia SL183 Ultra-Wide, No Distortion, 4K-Compatible Lens

Theia Technologies' SL183 ultra wide, no distortion lens provides up to 116 degrees HFOV without fisheye distortion. The 5+ megapixel resolution lens is part of its family of ultra wide angle, no/low distortion lenses using its patented, Linear Optical Technology® – which corrects barrel distortion optically without the use of software, keeping straight lines straight.

The lens provides 116° to 77° HFOV with its 1.8 - 3mm varifocal range. The lens is IR corrected for use with Day/Night cameras and with its compact 49.5mm length, it fits in smaller housings and domes. With its EasyZoom™ capability, once focused minimal refocus is needed post zooming. The lens features a slip mount that allows the user to position thumb screws for convenient access to focus and focal range adjustments post-installation on the camera.

The lens works with 1/2.3" 4K sensors or smaller, with Manual and DC auto-iris, CS or C mount versions. For full specifications, drawings and CAD files visit the link below. For pricing and availability email us at [info@theiatech.com](mailto:info@theiatech.com).

Request more information:  
[www.SecurityInfoWatch.com/11327104](http://www.SecurityInfoWatch.com/11327104)  
[www.TheiaTech.com](http://www.TheiaTech.com)



## Theia Technologies' Award-Winning 4K Lens Family



Theia Technologies' family of 4K Day/Night lenses provides full 12-megapixel performance for the most demanding high-resolution applications, such as traffic monitoring, ANPR/LPR, stadiums and data analytics. Just two lenses cover a horizontal field of view of 7 to 112 degrees, with the SL/TL410 lens providing a focal range of 4-10mm, while the SL/TL1250 telephoto lens offers a 12-50mm focal range.

Both lenses have excellent IR correction with less than a 5-micron focus shift in Near IR light for superior Day/Night performance. And at f/1.4, the SL/TL410 lens offers excellent light gathering ability in low light conditions. The lenses are designed to cover the larger 1/1.7" 4K image sensors while at the same time resolving the smaller pixels of the 1/2.3" 4K sensors. With both lenses measuring only 52mm long (64.5mm TTL), they are the most compact of comparable 1/1.7" format 4K lenses available on the market to facilitate use in domes and bullets, as well as on box cameras.

Both lenses feature a slip mount that enables the user to position thumb screws for convenient access to focus and focal range adjustments post-installation on the camera.

The lenses are offered in manual, motorized zoom, focus, IR cut filter and motor stops, with DC Auto-iris, P-iris, CS/C and D25 board mount combinations. For full specifications, drawings and CAD files visit the link below. For pricing and availability email us at [info@theiatech.com](mailto:info@theiatech.com).

Request more information:  
[www.SecurityInfoWatch.com/12399899](http://www.SecurityInfoWatch.com/12399899)  
[www.TheiaTech.com](http://www.TheiaTech.com)



## Geutebrück's G-Core VMS



Geutebrück is an industry leading video security surveillance systems manufacturer based in Windhagen, Germany. The company, founded in 1970 by Thomas Geutebrück, today has a global network of employees and subsidiaries who sell, service and support the industry's leading video surveillance technology.

G-Core is Geutebrück's Video Management System (VMS) software. This robust platform is at the foundation of the company's continued growth and success. Since its release, G-Core has been recognized for its quality, speed, performance and reliability. To provide customers the very best in a VMS solution, Geutebrück also manufactures its own line of G-Scope servers.

When the G-Core VMS software is deployed on a G-Scope VMS server, there is simply no better solution on the market today. There are tremendous benefits from having German-engineered software and hardware that has been purposefully designed and engineered to work together.

Geutebrück also offers a Security Information Management software platform known as G-SIM and G-SIM Global. This software offers enterprise-level management, whether local or global, and provides many features, including personalized user interfaces with stress-free management of alarms; centralized management of user rights across scalable systems; video management across multiple locations with interactive site plans/maps; and multiple failover functions with a full audit trail.

Learn why Geutebrück has been the leader in providing intelligent video security solutions worldwide for over 48 years.

Request more information: [www.SecurityInfoWatch.com/12194388](http://www.SecurityInfoWatch.com/12194388)  
[www.GeutebrueckUSA.com](http://www.GeutebrueckUSA.com)



## March Networks CA2 Series HD Analog Cameras

The CA2 Series HD analog cameras from March Networks enable organizations to capture sharp 1080p video over existing coaxial cable without the cost and disruption typically required to upgrade to Cat5/6. They also come with multiple mounts, including an innovative drop ceiling mount that cuts installation times by 50 percent or more. The cameras incorporate infrared micro-LEDs for illumination in total darkness, and Wide Dynamic Range to eliminate shadows and saturation in bright and low-light environments. They are enclosed in a vandal-resistant, IP66-rated aluminum housing for indoor/outdoor applications.

Request more information:  
[www.SecurityInfoWatch.com/12407478](http://www.SecurityInfoWatch.com/12407478)



## Western Digital Purple microSD Card

As the adoption of 4K Ultra HD video, emerging artificial intelligence (AI) applications and analytics drive the rapid growth and evolution of data in surveillance, Western Digital Corp., has unveiled its Purple microSD card, purpose-built for the complex and dynamic data demands of modern surveillance cameras and edge systems. Optimized for 24/7 surveillance video capture, the card captures and preserves video in a variety of high-definition and next-generation formats, including 4K Ultra HD video, as well as supports the movement of data to core data systems for analytics and fast business insights. The rugged and humidity-resistant design of this new card enables trusted video capture in a range of environments.

Request more information:  
[www.SecurityInfoWatch.com/12410003](http://www.SecurityInfoWatch.com/12410003)

## Vicon V800D Series H.265 Indoor Domes

Vicon Industries Inc.'s V800D Series of H.265 indoor domes include 2 MP and 4MP models. The cameras are available with a choice of fixed or motorized varifocal autoiris lens and include IR illuminators for viewing in all lighting conditions. True Wide Dynamic Range (T-WDR) further improves picture quality by balancing high contrast between bright and dark areas, including difficult-to-see spaces with back-lit lighting. Cameras are designed for easy installation and mounting on walls or ceilings. The H.265 compression technology significantly reduces file size and conserves bandwidth, providing cost savings in network infrastructure and storage hardware.

Request more information: [www.SecurityInfoWatch.com/12407129](http://www.SecurityInfoWatch.com/12407129)



## SureClose® is a Hinge & Closer, in One Small Powerful Package!

Prevent callbacks before they happen!

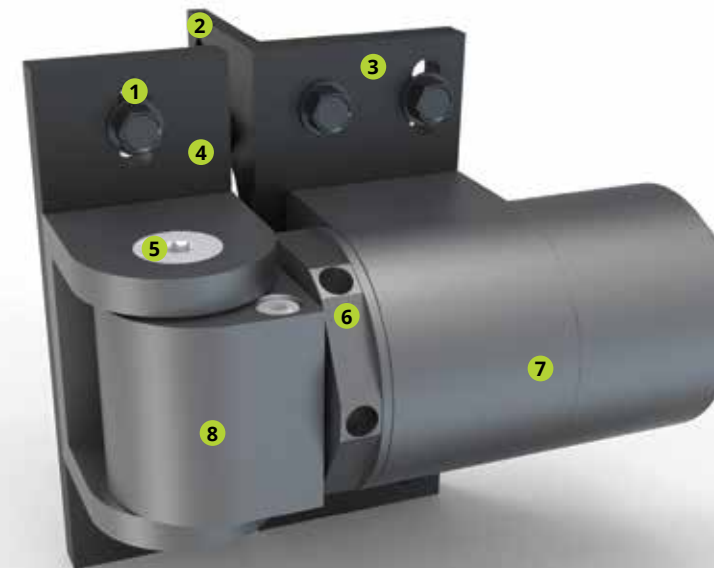


1 Vertical alignment slots

2 Quick-fit alignment legs: For ease of installation, alignment and double face-fixing strength.

3 Superior corrosion resistance:
 

- Steel Weld-on models feature hi-performance proprietary non-electrolytic zinc flake coating, no need to grind off before welding
- Aluminum Screw-on models contain a 50-micron thick hard anodizing coating



Sold as a single hinge

4 Multiple mounting options:
 

- Mounting brackets included
- Aluminum screw-on
- Steel weld-on or screw-on
- Fasteners included

5 Stainless steel security Torx screws that prevent tampering.

6 Additional features:
 

- Adjustable self-closing speed and force
- Adjustable final snap-close action
- Horizontal adjustment
- ADA compliant

7 Powerful, hidden hydraulics... that don't leak! Hydraulics are concealed within the hinge providing a controlled, quiet close in a tamper-resistant, compact design. No need to ever add fluid.

8 Dual Bearing Glide System™ Two rows of bearings for consistently superior performance.



2 Year on SureClose® Bearings

**D&D Technologies**  
 World's most trusted gate hardware  
 Request information: [www.SecurityInfoWatch.com/10929523](http://www.SecurityInfoWatch.com/10929523)

(714) 677-1300 | [ddtechglobal.com](http://ddtechglobal.com) | [info@ddtechusa.com](mailto:info@ddtechusa.com)



## DSC iotega Wireless Security and Home Automation System



iotega is the next generation wireless security and automation solution designed to provide smarter and safer living for homes and small businesses.

With built-in, industry-leading PowerG wireless technology, iotega provides a fully encrypted security system that elevates homes and businesses to a new level of security while including remote interactive smart services. It provides superior reliability with end-to-end 128-bit AES encrypted two-way sensors and includes multiple advanced security features such as a built-in siren, two-way voice, 99 user codes and Transport Layer Security.

PowerG technology addresses the key requirements for wireless security systems, including reliability, performance, privacy, minimizing vulnerability, increasing usability and decreasing maintenance. Discrete in design, iotega includes a vanishing touch keypad, as well as an optional 7-inch Wi-Fi enabled touchscreen, wireless keypad arming station and flexible software app compatibility.

Request more information:  
[www.SecurityInfoWatch.com/12380437](http://www.SecurityInfoWatch.com/12380437)  
<http://DSC.com/iotega>



## D&D Technology's SureClose Adjustable Hydraulic Gate Closers



The SureClose ReadyFit hydraulic gate hinge and closer manufactured by D&D Technologies now features new stainless steel security Torx screws that prevent tampering. SureClose gate hinges offer superior corrosion resistance, hydraulics that are concealed within the hinge – providing a controlled, quiet close in a tamper-resistant compact design.

SureClose's Dual Bearing Glide System™ provides consistently superior performance. SureClose hinges never need fluid added and feature a two-year warranty.

D&D Technologies is the recognized leader in safety and hi-performance gate hardware providing the broadest range of gate hardware for every application. Products include MagnaLatch® magnetic pool and safety gate latches, TruClose® adjustable, self-closing gate hinges, SureClose® the commercial grade hinge & closer, Shut It hinges, LokkLatch® gate latches and Stainless Steel hinges and latches.

Request more information: [www.SecurityInfoWatch.com/12070457](http://www.SecurityInfoWatch.com/12070457)  
[www.ddtechglobal.com](http://www.ddtechglobal.com)



## Exit Stopper Door Alarm from STI

STI's newly redesigned Exit Stopper Door Alarm continues to help solve the problems of unauthorized exits and entries of fire or emergency doors. The multi-function door alarm now flashes while it emits an audible alarm — helping to further deter wrongful use of a protected door. The unit (STI-6400) is easy to install and the stop sign shape helps deter misuse. When activated, it sounds a warning alarm and now includes a flashing LED. User selects on location the ear piercing alarm volume and length (30 seconds, three minutes or continuous) or annunciator mode.

Request more information:  
[www.SecurityInfoWatch.com/12401504](http://www.SecurityInfoWatch.com/12401504)



## Senstar LM100 Fence System

The Senstar LM100™ is the world's first 2-in-1 hybrid perimeter intrusion detection and intelligent lighting system. Combining two key security functions, it acts as a powerful deterrent against intruders, detecting and illuminating them at the fence line. Optimized for use with surveillance camera systems, it provides localized, uniform, configurable lighting along the fence. Uniform coverage lets cameras operate with a higher dynamic range, ensuring objects and people are illuminated while avoiding the generation of dark silhouettes in front of bright backgrounds. Each luminaire also includes built-in accelerometer technology to detect any attempt to cut, climb or lift the fence fabric.

Request more information:  
[www.SecurityInfoWatch.com/12361126](http://www.SecurityInfoWatch.com/12361126)

## RBtec's Ironclad Fence Alarm System

The Ironclad from RBtec Perimeter Security Systems is a sensor cable that is attached to the fence to detect cutting, climbing, lifting or jumping off the fence. A single run of the cable in the middle of the fence provides detection along the entire height of the fence up to 10ft against any intrusion attempt. Each processor can monitor up to two zones. The system designed to connect to any alarm system and is able to retrofit to old or new burglar alarms/DVR/NVR/SCADA systems. It uses three layers of filtration to limit false alarms.

Request more information: [www.SecurityInfoWatch.com/12400175](http://www.SecurityInfoWatch.com/12400175)



## M1 Control Systems from ELK Products

M1 provides the ideal combination of security, energy management, and integrated control solutions. M1 delivers rock solid security and life safety with comprehensive detection and state-of-the-art reporting capabilities. It features a fast micro-processor for enhanced speed, capability and security. Event notifications can be provided via phone call, email, or text message. ELK's Two-Way wireless sensors feature multi-level security to prevent hacking. Using an integration friendly approach, M1 offers full-featured automation capability to enhance safety, comfort and convenience. M1 provides intelligent control of lights, thermostats, locks, gates, garage doors, water valves and more. Smart features help reduce energy costs without sacrificing comfort. M1 can be remotely controlled from smartphones, tablets, PCs, web browsers and more – with or without monthly fees.

Request more information:  
[www.SecurityInfoWatch.com/10929437](http://www.SecurityInfoWatch.com/10929437)  
[www.elkproducts.com](http://www.elkproducts.com)



## Motion Detection Sensor from Protech



The Pyramid Connect dual technology motion detection sensor from Protech features digital doppler pulsed radar and range cut-off – which when combined with advance target speed analysis and random moving object rejection, enhances false-alarm-free performance. Other enhancements include alarm centralization technology, allowing it to connect into Protech's Maxibus head-end (Modbus platform). Stationary movement analysis gives the ability to rule out things like tree branch movement in the wind. It can be field adjusted to detect only approaching targets, only receding targets or both approaching and receding targets.

Request more information:  
[www.SecurityInfoWatch.com/12360785](http://www.SecurityInfoWatch.com/12360785)

## We have SOLVED the VOIP alarm communication problem

Now, if you let Monitoring America monitor your alarm accounts you can continue to use the telephone line for alarm reporting.

It doesn't matter if your customer has a VOIP telephone line, Monitoring America works with POTS and VOIP.

4X2, Contact ID and SIA all will work fine with Monitoring America.

We also have the M2M Mini GSM & multiple IP receivers.



918-622-4357 • 800-879-1438 • Fax: 918-663-8897  
 3025 S. 116th Ave. • Tulsa, OK 74129-5223  
[www.monitoringamerica.com](http://www.monitoringamerica.com) • [info@monitoringamerica.com](mailto:info@monitoringamerica.com)

Request information: [www.SecurityInfoWatch.com/10490593](http://www.SecurityInfoWatch.com/10490593)

# ACCESS & POWER INTEGRATION

by Altronix®

**TROVE®**  
**SAVES TIME & LABOR**  
**...MAXIMIZING PROFITS**

- Easily combine Altronix® power and accessories with access controllers from the industry's leading manufacturers
- Trove enclosures with removable backplanes allow you to configure, layout and test prior to on-site installation
- Efficient, scalable designs for optimum performance and seamless integration
- Pre-assembled kits available in various configurations further reduce overall costs

Altronix® / 718.567.8181 / [altronix.com](http://altronix.com) / Made in the U.S.A.

Request information: [www.SecurityInfoWatch.com/10212790](http://www.SecurityInfoWatch.com/10212790)

## ELK-965 Low Battery Cutoff and Master Power Switch



An extended power outage can wreak havoc on an alarm system. As backup battery voltage drops, the alarm system may begin to operate erratically and a deep discharge can damage the backup battery. Eliminate these issues with the ELK-965 Low Battery Cutoff and Master Power Switch. This compact, easy to install device works with any 12 volt control panel or power supply. The ELK-965 automatically cuts off when battery voltage drops below 10 VDC to prevent a "run-away" system and battery deep discharge. Installers will also value the manual AC and battery on/off switch for simplifying system service and eliminating emergency service calls. The ELK-965 is backed by ELK's hassle-free LIFETIME warranty. Also available in a money saving 20 pack, the ELK-965B20.

Request more information: [www.SecurityInfoWatch.com/12385107](http://www.SecurityInfoWatch.com/12385107)  
[www.elkproducts.com](http://www.elkproducts.com)



**Equip your toolbox with SELECT problem-solvers**

### Speed up installations with these new solutions.

Whether you're renovating high-traffic entryways or putting in new frames and doors, you want your job to go faster and easier. Now there are three ways to simplify installing SELECT geared continuous hinges:

#### HB375 DRILL BIT

**No center punch needed.** SELECT's .375-inch drill bit is designed specifically to speed up installation of our geared continuous hinges.



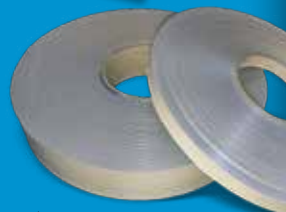
#### PIVOT HINGE HOLE COVERS

**Instant improvement.** Mask the unsightly holes left by previous pivot hinge preps with SELECT's self-adhesive covers. Block out insects, dirt and water, too.



#### SHIM STOCK

**Make invisible adjustments.** Square up doors and frames without ruining their appearance. SELECT's shim stock comes in clear anodized aluminum strips or 100-foot rolls of translucent UHMW.



800-423-1174  
[SelectHinges.com/SBB](http://SelectHinges.com/SBB)



Request information: [www.SecurityInfoWatch.com/10215943](http://www.SecurityInfoWatch.com/10215943)

## Altronix Trove3 Enclosures and Backplanes

Trove3 enclosures with removable backplanes are the latest addition to Altronix's expanding line of access and power integration solutions.

Designed for large scale systems, Trove3M3 accommodates a host of Mercury controllers while Trove3SH3 accommodates Software House controllers with both models designed to integrate with Altronix power supplies.

Trove simplifies board layout and wire management, while providing more flexibility when designing and deploying access systems. Removable backplanes allow installers to easily configure and test prior to on-site installation, reducing time and labor – increasing profitability. Trove3 houses up to eight (8) 12 VDC/12AH batteries and includes cam lock, tamper switch and mounting hardware.

Trove now supports over 40 brands, including: AMAG, Bosch, CDVI, DMP, Genetec, HID, Honeywell, Kantech, Keyscan, Lenel, Mercury, ProdataKey (PDK), Sielox, Software House and ZKTeco USA with more to come. Custom kits are available upon request. Altronix also offers a free Trove System design tool on their website to further simplify the product selection and design process.

Request more information: [www.SecurityInfoWatch.com/12400197](http://www.SecurityInfoWatch.com/12400197)  
[www.altronix.com](http://www.altronix.com)



## ELK Auto-Resetting AC Transformers

For more than 17 years, professionals have trusted ELK's AC transformers for reliable performance. Auto-resetting PTC overload protection prevents transformers from being blown by a short or overloaded circuit, saving installers time and the cost of a new transformer. Simply remove the short/overload to re-start. Built-in wire strain relief prevents intruders from pulling wires loose from the transformer terminals. A green LED indicator provides visual confirmation of power output. An electrical outlet mounting tab allows the transformer to be securely attached to the outlet. ELK transformers also feature a grounding prong and terminal. ELK's AC transformers are UL listed, RoHS compliant and have a hassle-free LIFETIME warranty. ELK-TRG1640 is rated at 16.5VAC, 45VA, while ELK-TRG2440 is rated at 24VAC, 40VA.

Request more information: [www.SecurityInfoWatch.com/12329049](http://www.SecurityInfoWatch.com/12329049)  
[www.elkproducts.com](http://www.elkproducts.com)



## Minuteman Uninterruptible Power Supplies (UPS)

Para Systems has added the Encompass Series and Endeavor LCD Series to its line of Minuteman Uninterruptible Power Supplies (UPS). These battery backup systems use double conversion technology and provide power management features for protecting large networks, servers, data storage, enterprise communications, large-scale security systems, industrial equipment and Distributed Antenna Systems (DAS). By using double conversion, true online architecture, both products create an "electrical firewall," providing the ultimate protection for critical applications.

Request more information: [www.SecurityInfoWatch.com/12380492](http://www.SecurityInfoWatch.com/12380492)



# CUT THE CHAOS

## DISCOVER THE SOFTWARE THAT GIVES YOU COMPLETE CONTROL

If you're dealing with multiple systems stitched together with spreadsheets, duct tape, and glue, or you're leaking efficiency and billable time from too many manual processes... hope is in sight.

Say farewell to inefficient processes that drain productivity and profits. Take control with ConnectWise software solutions, designed to unite every aspect of your business, from project management and operations to time management, quoting and billing.

**For more information visit [ConnectWise.com](http://ConnectWise.com).**

 **ConnectWise**  
 800-670-6898 | [ConnectWise.com](http://ConnectWise.com)

Request information: [www.SecurityInfoWatch.com/12305860](http://www.SecurityInfoWatch.com/12305860)

## Platinum Tools' VDV MapMaster 3.0 Cable Tester

The VDV MapMaster™ 3.0 (P/N T130) combines continuity testing, mapping, generating tones and length measurement functions into a single easy-to-use unit for installation, troubleshooting and maintenance for telco, network or coax cable.

The back-lit display, glow-in-the-dark keypad and a built-in flashlight helps you to work in the dark. Whether your jobs are commercial or residential, the versatility and added features of the VDV MapMaster 3.0 makes it a best value cable verifier for the professional installer!

- Tests to T568A/B wiremap configuration: shorts, opens, miswires, reverses and split pairs
- Single-ended testing for shorts & split pairs
- Measures length in feet/meters
- Identifies cable location on active ports (switches) using flashing port link light
- Identify up to 20 network or coax cable runs at a time
- Tests voice (6 wire), data (8 wire) and video (coax)
- Audible Tone Generator with four selectable cadences
- MapMaster 3.0 is available in four different kits

For more information, call 800 749 5783 or visit the links below.

**Request more information:**  
[www.SecurityInfoWatch.com/12313523](http://www.SecurityInfoWatch.com/12313523)  
[www.platinumtools.com](http://www.platinumtools.com)



## Trine's 4850ITL Electric Strike Installation Tool

Trine Access Technology has developed the ultimate tool for installing electric strikes used with rim panic devices.

As with all Axion strikes from Trine, this tool was designed to install the entire 4800 series line of strikes quickly and accurately the first time, making the best installation available today.

The 4850ITL is not just a template, it is made from actual production parts giving the installer the ability to adjust for common door issues such as sagging and misalignment. By placing the ITL on the frame, it allows the installer to "feel" the strike working with the door and panic device allowing for fine adjustments before holes are drilled.

The flexibility and therefore accuracy of the 4850-ITL is derived from our patent pending magnetic holding system built into the body of the tool.

Combine this with a custom center punch that is included with every 4850-ITL used to make perfectly centered marks on the frame, this tool is a must for every installer of electric strikes.

See the video by searching "4850ITL" on Youtube!

**Request more information:** [www.SecurityInfoWatch.com/11416079](http://www.SecurityInfoWatch.com/11416079)  
[www.trineonline.com](http://www.trineonline.com)



## ANSI-ITL for the Best and Easiest Installation of Trine Electric Strikes

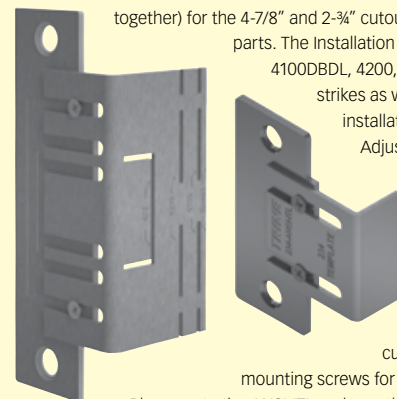
Trine's ANSI-ITL is the best way to install both 4-7/8" and 2-3/4" Trine Electric Strikes. Lean and efficient - it utilizes only 2 pieces each (screwed together) for the 4-7/8" and 2-3/4" cutouts which means less lost parts. The installation tool can be used with the 4100, 4100DBDL, 4200, EN400, EN435, EN430 electric strikes as well as 478, 478X, 234, and 234X installations on the 3000 series.

Adjustments on the installation tool allow for installation even on the lower cutout of the Schlage L series - for use with the 4100 and 4100 DBDL. Additionally the tool includes a scribe pen for accurately marking the cut-out lines on the frame. Two mounting screws for the tool is also included.

Please note the ANSI-ITL replaces the older 478-ANSI-ITL model number. The ANSI-ITL is fast, easy, and accurate.

Ask your distributor how you can get yours today.

**Request more information:** [www.SecurityInfoWatch.com/12385102](http://www.SecurityInfoWatch.com/12385102)  
[www.trineonline.com](http://www.trineonline.com)



## EXO...The Last Crimp Tool You Will Ever Need

Platinum Tools new ezEX-RJ45® Termination System provides a solution for terminating larger diameter twisted-pair cables. The new patented EXO Crimp Frame™ is a RJ45 crimp tool that can terminate multiple sizes of cables and conductors, with conductor sizes up to .048" found in Cat5e/6/6A cables.

It currently features two interchangeable dies that work with EZ-RJ45® and ezEX-RJ45® connectors. The EXO™ Crimp Frame and dies pair to ensure a flush cut and reliable termination every time.

The ezEX-RJ45® connector has a hi-lo stagger design to increase performance and accommodate larger conductors while maintaining the EZ® pass through design...saving time and money without sacrificing performance.

The ezEX-RJ45™ Termination System is winner of the Residential Systems "Best of Show" CEDIA award and 2017 BICSI Winter Award. (p/n 100061C).

**Request more information:** [www.SecurityInfoWatch.com/12382366](http://www.SecurityInfoWatch.com/12382366)  
[www.platinumtools.com](http://www.platinumtools.com)



## Gen 5 PEPS fobs for select Ford vehicles

New for 2018 are SVT style Gen 5 PEPS fobs for select Ford vehicles. The 2018 F150 Raptor Series has a specialized logo as well as the limited Ford Cobra. Now from Strattec, part numbers 5933019 and 5933020 have the Raptor logo. Part numbers 5933021 and 5933022 have the Cobra logo. There is also a specific back-up key (part number 5931475) that is paired with all four part numbers. To see all the applications for these keys, visit the links below.

**Request more information:**  
[www.SecurityInfoWatch.com/12385066](http://www.SecurityInfoWatch.com/12385066)  
<http://aftermarket.strattec.com>



## CyberLock ValidiKey 20 Vault

The VALIDIKEY 20 Vault from Cyberlock is designed to charge, program and dispense 20 CyberKey smart keys. The keys are secured in the vault in an unprogrammed state until an approved PIN and/or RFID card is presented. Following the presentation of a PIN or RFID card, the vault programs a key with access permissions, releases the door latch, and illuminates the programmed key. Keys are programmed with specific permissions assigned to each specific user. The unit can function as a standalone system, or it can be scalable, meaning numerous vaults can communicate within a single CyberAudit Enterprise system.

**Request more information:** [www.SecurityInfoWatch.com/12400443](http://www.SecurityInfoWatch.com/12400443)

## Cadillac Proximity Fobs from STRATTEC

Strattec is pleased to announce four new Cadillac Proximity Fobs to our line of GM original Remotes. The 5931852 and 5931857 PEPS Fobs can conveniently be on-board programmed and cover Cadillac SRX from 2010 - 2015 as well as Cadillac ATS, CT5 from 2013 to 2015. The 5931855 and 5931856 PEPS Fobs cover the Cadillac XTS from 2013 - 2015. On-Board programming is also available for these Fobs. They utilize our emergency key (5912534). Be sure to ask for the originals at your distributor today! To see all the applications for these keys, visit the links below.

**Request more information:** [www.SecurityInfoWatch.com/12385071](http://www.SecurityInfoWatch.com/12385071)  
<http://aftermarket.strattec.com>



**THE LAST THING YOU NEED:  
 AN UNHAPPY  
 CUSTOMER**

Cheap knockoffs inevitably fail.  
 Is it really worth the risk?

Offering your customer a STRATTEC key or lock means they're getting nothing less than the best. As an OE-licensed aftermarket supplier for Ford, General Motors and more, STRATTEC helps locksmiths build better customer satisfaction in three important ways:

**QUALITY** - A STRATTEC replacement upholds the same rigorous quality standards that OE manufacturers demand.

**RELIABILITY** - STRATTEC's genuine replacement products have a solid reputation for quality, ensuring locksmiths happy, satisfied customers.

**SUPPORT** - Generations of locksmiths have come to rely on the ready availability of our technical support and product information.



Don't set yourself up for backlash from an unhappy customer, always choose genuine STRATTEC keys, locks and pinning kits.

**STRATTEC... DESIGNED TO LAST.**

[aftermarket.strattec.com](http://aftermarket.strattec.com)

**Request information:** [www.SecurityInfoWatch.com/10215947](http://www.SecurityInfoWatch.com/10215947)



**ConnectWise: Your Security Business Just Got Smarter**

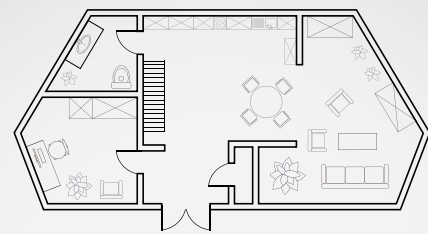
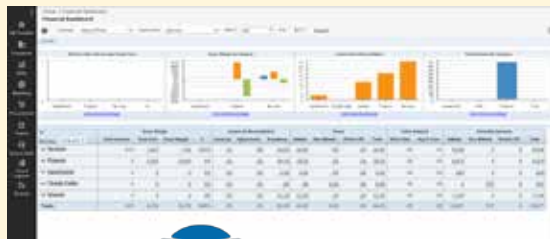
Managing your security business comes with a unique set of challenges. ConnectWise can help. ConnectWise solutions integrate all aspects of your business – from marketing, quoting and sales, to project management, time management and billing.

Simplify the management of complex projects, ensure your techs are staying busy, automate the collection of time, expenses and products for billing and more. ConnectWise solutions streamline every step, so you can focus on what really matters.

Connect your business with: ConnectWise Sell, a quote and proposal solution that simplifies and speeds up sales processes; or ConnectWise Manage, a business management solution that unifies all aspects of your operations. The software covers time management, quoting and sales to project management, purchasing and billing.

Request more information: [www.SecurityInfoWatch.com/12305863](http://www.SecurityInfoWatch.com/12305863)

[www.connectwise.com](http://www.connectwise.com)



All the home security and automation you need, under one roof.



**The new iotega Wireless Security & Home Automation solution.** iotega can be summed up in three words: Secure, Simple and Scalable.

**Secure.** Fully encrypted and wireless security backed by PowerG technology.

**Simple.** Easy installation and ability to manage systems remotely.

**Scalable.** Start with basic security to a fully secured smart solution with the ability to connect to home automation devices.



Visit [DSC.com/iotega](http://DSC.com/iotega) to learn more.

Request information: [www.SecurityInfoWatch.com/10547368](http://www.SecurityInfoWatch.com/10547368)

**AlarmBiller from Perennial Software**

AlarmBiller is a 100-percent web-based application designed specifically to help security companies run and operate their businesses. The software's customer lifecycle management capabilities are powerful enough to decrease wasted time and increase profits for dealers of any size – from one customer to thousands. The software enables users to process work orders and manage daily schedules right from the field; create and deliver recurring invoices with a push of a button; schedule automatic payments via credit card or bank account; and more.

Request more information: [www.SecurityInfoWatch.com/12400659](http://www.SecurityInfoWatch.com/12400659)

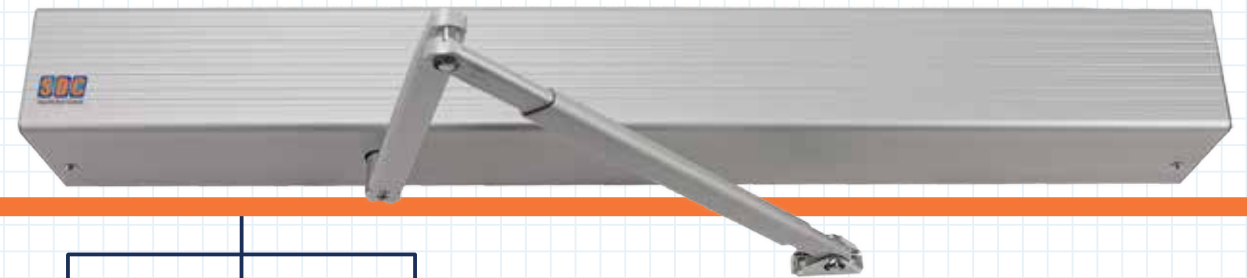


**D-Tools SI Software**

D-Tools System Integrator (SI) is an estimation, design and project management software platform specifically designed to fulfill the diverse needs of security systems design and installation firms – from large commercial integrators to small residential companies. The software ties these elements together into a singular, data-driven, connected process that helps improve operational efficiency and profitability, while reducing time and costs. It can help increase revenues while reducing time and costs associated with the sale, design, installation and integration of Audio/Visual, energy, home automation, lighting control, security, and IT/networking systems.

Request more information: [www.SecurityInfoWatch.com/10722253](http://www.SecurityInfoWatch.com/10722253)

**LOW-POWER COMPLIANCE & ACCESS CONTROL**

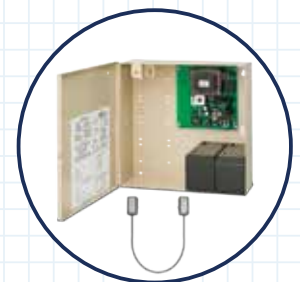
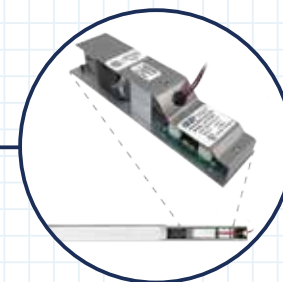


Use Auto EntryControl™ for Low-Power Retrofits of any Building Entrance with an Exit Device.



**Helps meet all US and Canadian ADA requirements for door installations in retail storefronts, office buildings, campuses and healthcare facilities.**

- State-of-the-art microprocessor-based unit
- Self-tuning and self-learning
- Non-handed operation
- Full mechanical stops
- Variety of interface options



Create your own Exit Door Opening Solution. <http://sdccsecurity.com/Auto-EntryControl>



the lock behind the system

SDCCSecurity.com • 800.413.8783

Request information: [www.SecurityInfoWatch.com/10214991](http://www.SecurityInfoWatch.com/10214991)

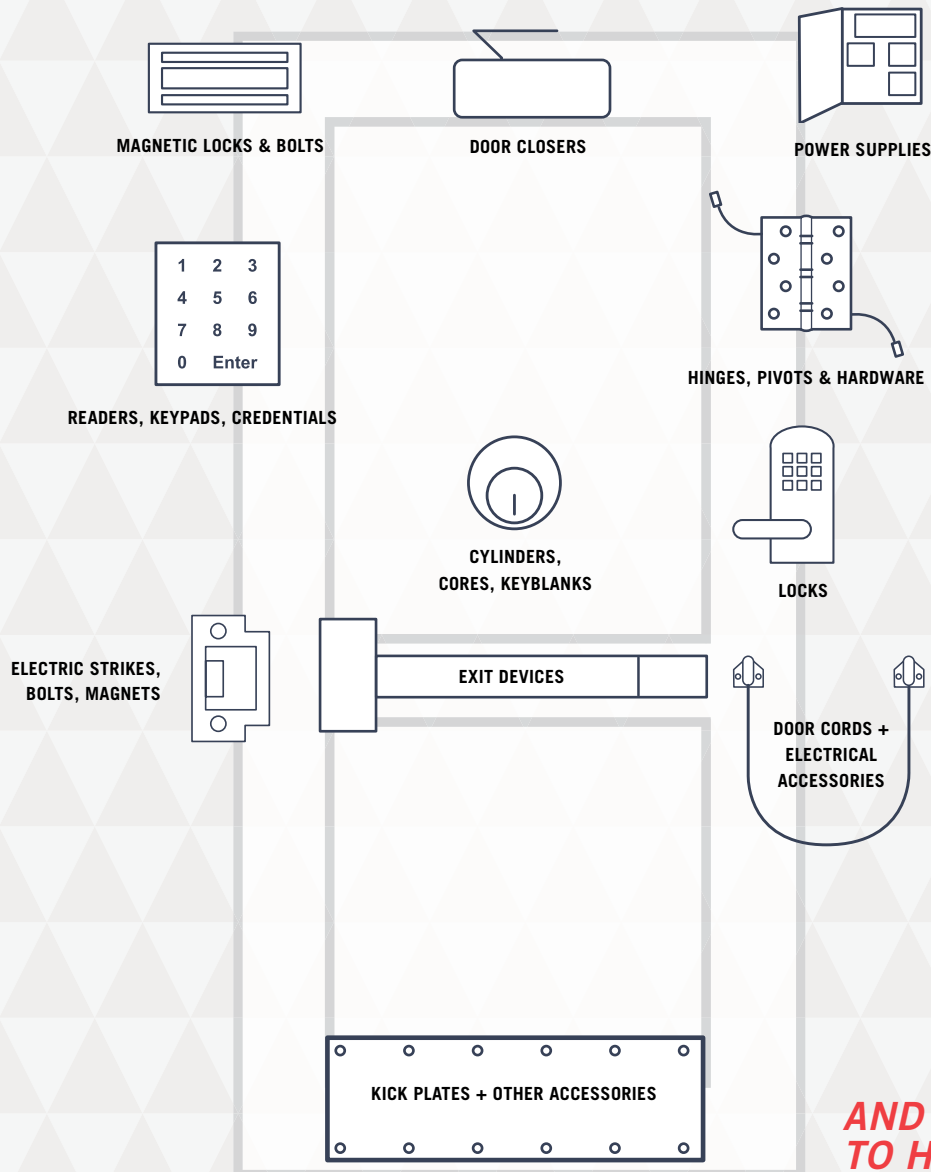
Distributed By



# THE ELECTRICAL AND MECHANICAL DOOR HARDWARE SPECIALISTS

Unmatched inventory, AND the knowledge and expertise to meet your needs, only at Security Lock Distributors.

**OPEN THE OPPORTUNITY TO OWN THE DOOR...**



**ASSA ABLOY**

[WWW.SECLOCK.COM](http://WWW.SECLOCK.COM) | 800-847-5625

Request information: [www.SecurityInfoWatch.com/10215009](http://www.SecurityInfoWatch.com/10215009)