

Automotive

Supplement to Locksmith Ledger International
May 2023

LOCKSMITHING

2023

The Key to Success

**Silca RW5 Plus:
Cloning Equipment
Gets An Upgrade**

**ALOA IAAL Ready
to Host First
Convention**

**STRATTEC 2023
Update**

**Key Machine
Encyclopedia:
Automotive Edition**

**Test-Driving the
Börkey Rexa 5
Key Duplicator**



www.locksmithledger.com

ENDEAVOR
BUSINESS MEDIA™



Chevrolet • Buick • GMC • Cadillac

New Original Equipment Proximity Keys

We've added new GM proximity and emergency keys that cover over 50 different models



- Equipping Locksmiths with the Ability to Service Millions of Vehicles
- Covering 90% of Vehicles on the Road

See our website: <http://aftermarket.strattec.com> for applications and more information.

Don't forget to use our new improved Vehicle Match for all your needs.

 **STRATTEC**TM
TRUSTED SOURCE. MANY SOLUTIONS.®



General Motors Trademarks are used under license to STRATTEC Security Corporation.





PUBLISHED BY ENDEAVOR BUSINESS MEDIA, LLC

1233 Janesville Ave
 Fort Atkinson, WI 53538
 920-563-6388 • 800-547-7377

VOL. 83, NO. 5

Editorial Director Steve Lasky
 847-454-2719
 slasky@endeavorb2b.com

Senior Editor Paul Ragusa
 224-303-0611
 pragusa@endeavorb2b.com

Managing Editor Emily Pike
 epike@endeavorb2b.com

Contributing Editors

Steve Fryman • Steve Kaufman • Tim O'Leary
 Cameron Sharpe • Wayne Winton • Steve Young

SALES

Group Publisher Jolene Gulley-Bolton
 480-524-1119
 jgulley@endeavorb2b.com

Sales Representative Brian Lowy, 847-454-2724
 brlowy@endeavorb2b.com

Classifieds & Marketplace Amy Stauffer, 920-259-4311
 astautfer@endeavorb2b.com

Art Director Jennifer Dakas
 jdakas@endeavorb2b.com

Production Manager Jane Pothlanski
 jpothlanski@endeavorb2b.com

Ad Service Manager Carmen Seeber
 cseeber@endeavorb2b.com

Audience Development Manager Delicia Poole
 dpooler@endeavorb2b.com

LIST RENTALS

Account Executive InfoGroup, Michael Costantino
 Michael.Costantino@infogroup.com
 402.836.6266
 InfoGroup, Kevin Collopy
 Kevin.Collopy@infogroup.com
 402.836.6265

ENDEAVOR BUSINESS MEDIA, LLC

CEO Chris Ferrell
CRO/CMO June Griffin
CFO William Nurthen
COO Patrick Rains
Chief Administrative and Legal Officer Tracy Kane

EVP, Group Publisher Lester Craft
EVP Marketing Solutions Jacquie Niemiec

SUBSCRIPTION CUSTOMER SERVICE

888-556-2272
 circ.locksmithledger@omeda.com
 P.O. Box 3258 • Northbrook, IL 60065-3258

ARTICLE REPRINTS

Brett Petillo, Wright's Media 877-652-5295, ext. 118
 bpetillo@wrightsmedia.com

Locksmith Ledger (USPS #0587-900, ISSN 1050-2254 print, ISSN 2771-6317 online) is published monthly by Endeavor Business Media, LLC, 1233 Janesville Ave., Fort Atkinson, WI 53538. Periodical postage paid at Fort Atkinson, WI, and additional mailing offices. POSTMASTER: Send address changes to Locksmith Ledger, PO Box 3257, Northbrook, IL 60065-3257. SUBSCRIPTIONS: Publisher reserves the right to reject non-qualified subscriptions. Subscription prices: U.S. \$58.80 per year; Canada/Mexico \$89.60 + tax per year; All other countries \$93.00 per year. All subscriptions are payable in U.S. funds. Send subscription inquiries to Locksmith Ledger, PO Box 3257, Northbrook, IL 60065-3257. Customer service can be reached toll-free at 877-382-9187 or at ll@omeda.com for magazine subscription assistance or questions.

Printed in the USA. Copyright 2023 Endeavor Business Media, LLC. All rights reserved. No part of this publication may be reproduced or transmitted in any form or by any means, electronic or mechanical, including photocopies, recordings, or any information storage or retrieval system without permission from the publisher. Endeavor Business Media, LLC does not assume and hereby disclaims any liability to any person or company for any loss or damage caused by errors or omissions in the material herein, regardless of whether such errors result from negligence, accident, or any other cause whatsoever. The views and opinions in the articles herein are not to be taken as official expressions of the publishers, unless so stated. The publishers do not warrant either expressly or by implication, the factual accuracy of the articles herein, nor do they so warrant any views or opinions by the authors of said articles.



- S4 The Silca RW5 Plus Gets an Upgrade**
 This small but powerful cloning tool operates via Wi-Fi and the MyKeys Pro app
- S8 ALOA IAAL Ready to Host First Convention**
 Automotive locksmiths to gather Sept. 14-16 in Kansas City for education and a trade show
- S12 STRATTEC 2023 Update**
 26 new GM remote fobs and 4 emergency keys released
- S14 Automotive Training Guide**
 Education is key in this high-tech field
- S18 Test Driving the Borkey Rexa 5**
 The latest model of this key duplicator has several upgrades
- S21 Key Machine Encyclopedia, Automotive Version**
 Do your research before investing in this essential equipment.

»» ADVERTISERS INDEX

Company Name	Page	Web Site URL
ASP	S11	www.locksmithledger.com/10915082
Autel US Inc.	S13	www.locksmithledger.com/21091903
Kaba Ilco Corp.	S24	www.locksmithledger.com/10172820
Southern Lock & Supply Co.	S17	www.locksmithledger.com/10174614
STRATTEC Security Corp.	S2	www.locksmithledger.com/10173503
Transponder Island	S23	www.locksmithledger.com/11383966
UHS Hardware	S19	www.locksmithledger.com/21071012
Xhorse USA Inc.	S7	www.locksmithledger.com/12385546

This directory is provided as a service. The Publisher assumes no liability for errors and/or omissions.



The Silca RW5 Plus: Cloning Equipment

This small but powerful tool operates via Wi-Fi and the My Keys Pro app. *BY HERMAN MANZANARES III, RL*

The RW (Readable & Writeable) family of products from Silca have been helping automotive locksmiths clone transponder keys since the early 2000s. The products, which are sold in the North American market by Silca's sister company Ilco, have seen several

models over the years with only one available from security distributors. The RW4 Plus and associated M Box are great machines that have required a significant investment to keep updated as each new transponder chip rolls off the assembly line.

Eight years after the RW4 Plus intro video was launched, the RW5 has arrived to help security professionals reduce their inventory costs with the introduction of two transponder chips, the GTH and GTI Pro chips, which are designed to replace the standard GTH and GTI chips as well as the T49C, T80, T80 Plus, and T128C. (Photo 1)

The RW5 is significantly smaller than previous RW cloning devices (Photo 2) and receives updates via Wi-Fi instead of via a cabled connection, which can be a tedious process for some professionals.

The RW5 requires users to set up a MYKEYS Pro account. The MYKEYS Pro app, which is free for Android and Apple devices, was launched by Silca/Ilco to help security professionals address their needs in one application instead of using the Silca Remote



Photo 1. The new GTH and GTI Pro chips, which are designed to replace the standard GTH and GTI chips as well as the T49C, T80, T80 Plus, and T128C.



Photo 2. The RW5 is significantly smaller than previous RW cloning devices

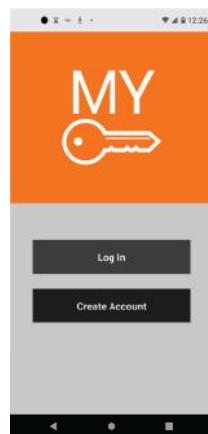


Photo 3. MYKEYS Pro app

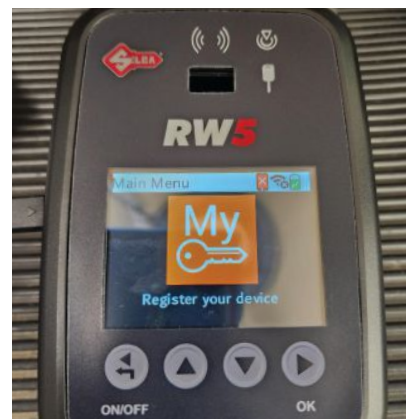


Photo 4. Setting up your device through the app

Gets An Upgrade

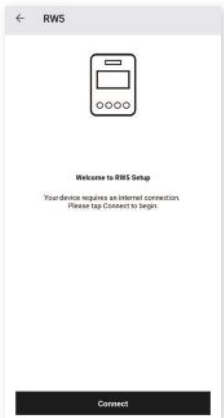


Photo 5. Setup continues

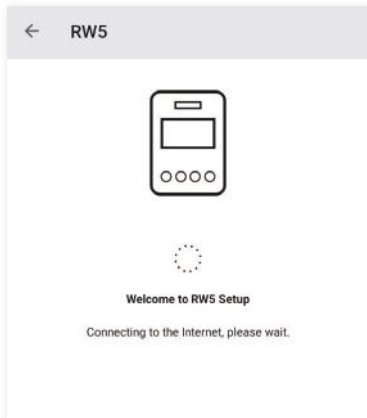


Photo 6. Connecting to the internet



Photo 7. Simple procedure completed and device is ready for use.



Photo 8. RW5 is compatible with the U-Snoop device

Service platform. (Photos 3-7)

One feature current RW4 Plus users will see carried over to the RW5 is the Universal Snoop (U-Snoop) device. (Photo 8) The RW5 comes with a new U-Snoop; however,

current U-Snoop owners can continue to use their devices and keep the device included with the RW5 as a backup unit. The RW5 was ready to use after one hour of setup and was field tested to have a two-hour

battery life, allowing for non-cabled use before a charge is needed with the included charging cable.

Overall, the user interface of the RW5 allows current RW users to jump right into cloning without



Photo 9. Beginning the cloning process, main menu



Photo 10. Insert key.



Photo 11. Key in place



Photo 12. Connecting via Wi-Fi

Automotive Locksmithing 2023



Photo 13. Insert GTIPro or UTX-S



Photo 14. GTI-PRO multi-transponder in its packaging



Photo 15. Writing the information

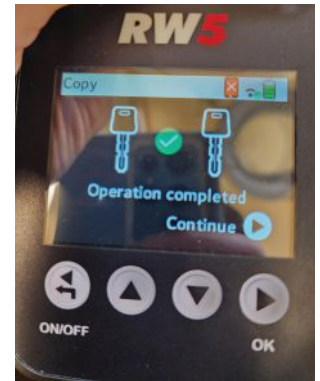


Photo 16. Operation is completed



Photo 17. Option to clone additional keys



Photo 18. Standard power cables



Photo 19. Identification mode

hesitation. In addition to this article, introductory videos and diagrams are available from www.ilco.us for those not familiar with the current cloning process. (Photos 9-17)

The cost of the RW5 unit and associated chips are enough to make even the budget-conscious professional think about adding the machine to their lineup.

Although the RW5 has a tremendous upside over its predecessors, some features are missing that hopefully an RW6 will address in the future. These include the lack of touchscreen operation and the Silca/Ilco standard short power cable which measures 3

feet and 2 inches and is barely long enough to sit on a standard workbench while the unit is plugged into a power outlet. (Photo 18)

In addition to standard cloning, the RW5 also offers identification, generation, and settings modes (Photos 19-20) The RW5 is sure to have a high return on investment and is a powerful unit that can fit in the palm of your hand.

Herman Manzanera III, RL, is co-owner of Los Alamos Lock & Key in Los Alamos, New Mexico. He has more than 25 years of locksmith experience. He can be reached via the web at www.losalamoslock.com.



Photo 20. Generation mode



Xhorse Family Security Products

For an Easier, more Complete User Experience

KEY CUTTING SERIES

VVDI SERIES

UNIVERSAL REMOTES

SUPER TRANSPONDER



CONNECT WITH US OUR SOCIAL MEDIA PLATFORMS



Xhorse Global
WATCH
SHARE
SUBSCRIBE



Xhorse Global
FOLLOW
TWEET
RETWEET



Xhorse Global
READ
SHARE
BOOKMARK



Xhorse Locksmith Club
LIKE
SHARE
COMMENT

Request Information: www.locksmithledger.com/12385546

ALOA IAAL Ready to Host First Convention

Automotive locksmiths to gather for education and a trade show Sept. 14-16

BY EMILY PIKE



Show site: Kansas City Convention Center

The one-year-old Associated Locksmiths of America (ALOA) International Association of Automotive Locksmiths (IAAL) has big plans for this year. The group will hold its first-ever convention Sept. 14-16 in Kansas City, Mo. Locksmith Ledger spoke with members of this new group to find out more about the organization, its upcoming show and the state of automotive locksmithing in general.

Q How would you describe the first year?

Ed Woods, chairman of the board, ALOA IAAL: Promising, with great expectations – this September will tell.

The division is growing and news of this new convention in September

is helping to create momentum and people are getting excited! We have received great feedback so far from attendees as well as interested vendors for the convention!

Q What are your goals for the next year?

Woods: Finish the first show and look for next year's spot. We are looking at a few locations for the future of course, and have some good considerations, but we really want to focus on making the first event a huge success in Kansas City!

As far as the goals of the IAAL Division, I think the goal for ALOA would be to continue to grow the division by providing the members with educational opportunities, such

as this convention, will do and give our members support and information to help them to continue to expand their knowledge and strengthen their business.

Q Tell us about your upcoming convention. Will it include both a tradeshow and training?

Dawne Chandler, ALOA: There will be two days of educational automotive locksmithing classes ranging from Fundamentals for Classic Cars, EEPROM, Mechanical Keys/High-Security Locks/Remotes, Chips and Motorcycle Locks too. The expo will be one-and-a-half days of vendors and manufacturers having booths with education, too.

Woods: The Expo is really looking good with many vendors reaching out and

interested. Education is the No. 1 priority. There will be lots of high-end classes. We've had very encouraging input from some of the best instructors in the world.

The event will offer all-day classes on Sept. 14 and 15, then opening up the trade show floor Sept. 15 from 5 to 9 p.m., a trade show and kickoff party all in one. On Sept. 16, classes will run from 8 a.m. to noon and PRP testing will start at 7 a.m. The trade-show floor will be open from 10 a.m. to 4 p.m. With this schedule, locksmiths will be able to take advantage of all the training and still visit the tradeshow floor. Eight classrooms are reserved, adjacent to the convention floor.

Though the educational lineup is still being finalized, I will be teaching a class involving servicing 1979s and 1980s GM steering columns. This is stuff that I quit teaching 20 years ago. Now, we have a new generation of locksmiths who have never torn down a steering column on a 1976 Corvette, or other pricey classic cars that are restored and still on the road. This younger generation can program a key for a 2019 Ford Escape in minutes, but put a 1975 El Camino in front of them and their first question is, 'Where's the Lishi?' Lishi picks hadn't been invented yet.

Other more high-tech classes will focus on EEPROM, including



sautering, which might not sound high-tech, but it is when you are working on chips the size of a postage stamp with as many as 64 legs that have to be desautered off the board to make new keys.

Motorcycle classes will include transponder programming and advanced motorcycle key generation.

The automotive industry needed its own convention, following the retirement of Jim Hetchler, the force behind the popular Just Cars automotive convention, now discontinued. Jim Hetchler did so much for the automotive industry. Now it's an opportunity for ALOA to shine.

CONVENTION DETAILS

While education is the main target for this event, the show will also feature vendors with the latest products and services under one roof at the Kansas City Convention Center. The Loews

Kansas City is on point as the host hotel adjacent to the convention center with a skywalk connecting the facilities for a quick walk between the two. The hotel and convention center are downtown and close to Main Street and a wide selection of restaurants and bars and outdoor venues that are easily walkable or accessible by the free trolley for attendees to enjoy while at the Expo.

The IAAL offers a discounted group room rate at Loews for rooms booked by Wednesday, Aug. 23 at 5 p.m. Reservations can be secured by calling 877 748-1451 and using the group name "IAAL".

On-Site Registration at the KC Convention Center will be:

- Thursday, Sept. 14, 7:30 a.m. - 5 p.m.
- Friday, Sept. 15, 7:30 a.m. - 5 p.m.
- Saturday, Sept. 16, 7:30 a.m. - 2 p.m.

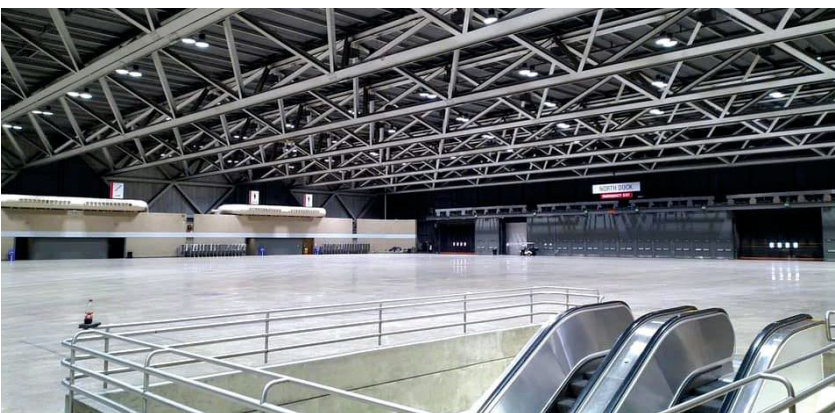
Editor's note: As we get closer to this event, Locksmith Ledger will add the class schedule and registration links.

Q **What training are you doing besides at the convention? Are there certifications for automotive locksmiths?**

Woods: There will be certifications offered like the CAL, Certified Automotive Locksmith and the CMAL, Certified Master Automotive Locksmith designations. We are also supporting classes at distributor shows.

Q **Has membership grown? Who is eligible?**

Woods: We are still in the growing stage for this division. Membership is for any locksmith in the industry who meets the requirements for membership with ALOA. There are actually two membership options. ALOA members can add on an ALOA AAAL membership, or automotive locksmiths can join the automotive chapter.



Plenty of space for exhibitors

Q How are you reaching all these automotive locksmiths? I notice your social media game is strong. Is that an effective tool for your organization?

Woods: Yes, we are working with Facebook and locksmith forums Clear-Star and KeyPro. An IAAL Convention brochure will be mailed out to all ALOA members in the June Keynotes issue, which will be featuring the automotive locksmith.

Q As automotive becomes more specialized and high-tech, often requiring substantial investment in equipment, how do new locksmiths get into this field?

Woods: Spend wisely and market your services.

For more information about the ALOA International Association of Automotive Locksmiths, visit www.aloa.org.

STATE OF THE AUTOMOTIVE INDUSTRY

Woods was also kind enough to share his insights on the state of automotive locksmithing industry. He noted that it is challenging for locksmiths to get started in automotive because of the high costs of equipment needed to do their jobs.

Key machines can start at \$3,000; programmers can range from \$1,000 to \$6,000 and nobody has just one programmer, he says. Then OEM key blanks, prox keys and remote head keys are pricy.

“It becomes very difficult to have a large inventory. A one-man operation may need \$50,000 in inventory,” he estimates. “But it can also be very lucrative.”

Woods’ recommendations for new automotive locksmiths include taking advantage of all the training out



2023 Hyundai Palisade, one of the keyless vehicles with pushbutton start from Hyundai

there – via ALOA, manufacturer and distributor events. Banner Solutions, Hans Johnson, Southern Lock and Supply, American Key Supply and the Automotive Keys Group offer extensive training classes.

Woods tells an interesting story about how he got started in automotive. “In November 1997, I ran into my very first transponder that needed one of those fancy machines that only dealers had back then.”

His best client at that time was the Trump Casino in Gary, Ind., and he was called there multiple times a day when guests or valet parking attendants lost keys. The valet lost the key to a brand-new Lincoln, one of the first transponder-equipped vehicles. Woods made a new mechanical key, but of course it would not start the car. The car had to be towed to the dealer, who programmed the key.

Nobody had a dealer diagnostic tool at that time. But Woods had to find one or lose his best customer. The casino insisted that lost keys be replaced on site. He spent \$4,300 on an early model programmer and says it was paid for in less than a year.

Today, Woods is the in-house locksmith for Hard Rock Casino in Gary, Ind.

His other advice for new locksmiths is to focus on marketing. Many consumers have no idea that locksmiths can perform the same services as dealers, usually at a lower price point and often at the customer’s location.

“A very big part of automotive locksmithing is educating our customers that we do much more than open cars with a Slim Jim,” Woods said.

Dealership work is also a market for auto locksmiths. Often the dealerships don’t want to invest their time and money in equipment and are happy to hire the local automotive locksmith to do that work, he added.

When asked if auto lockout calls are still lucrative, Woods responded with a resounding no.

But that doesn’t mean car keys are going away anytime soon. “That is at least 10 to 15 years away, maybe not as much mechanical but keys are going to be around.”

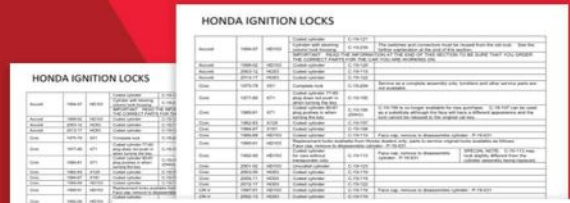
Security remains a concern, he explained, noting that the top three vehicles for car theft all are keyless – Hyundai and Kia models, followed by Jeep Chargers and Challengers. Chryslers are easier to steal because they are push-start and there’s no mechanical lock.



YOUR ULTIMATE SOURCE OF INFORMATION FOR CAR LOCK REPAIR PARTS

www.CARLOCKS.COM

All the information
you need is just a
click away!



Here's how to do it:

Go to: www.carlocks.com

- ✓ Click "Catalog" on the menu bar.
- ✓ Clicking on "Locksmiths in the USA and Canada" will take you to the master menu of PDF files.
- ✓ Click on the file of the type of part you need. For example if you are working on a Honda ignition, click on "Honda ignition locks" and the file will open.
- ✓ Find the year and model you need on the chart for the information about the parts that are available for that car.
- ✓ Tumblers and keying kits are listed at the bottom of each file, referenced by the key blank used.
- ✓ Supplemental information is also listed at the bottom of each file when necessary to make sure that you have all of the information that you need. The general information at the beginning of each file can also be helpful.
- ✓ Almost all makes and models are listed. If we do not have the parts you need for a specific model we tell you who most likely does have them.

HONDA IGNITION LOCKS

Accord	1994-97	HD103	Coded cylinder Cylinder with steering column lock housing IMPORTANT: READ THE THE CORRECT PARTS
Accord	1998-02	HD103	Coded cylinder
Accord	2003-12	HO03	Coded cylinder
Accord	2013-17	HO03	Coded cylinder
Civic	1975-79	X51	Complete lock
Civic	1977-80	X71	Coded cylinder 77-80 plug does not push in when turning the key
Civic	1980-81	X71	Coded cylinder 80-81 plug pushes in when turning the key



Keep Up to Date

Send us an e-mail to info@carlocks.com with "Notification" in the subject line and we will put you on our mailing list to be notified whenever we make a change to the website. If you download the files you will want to replace the old file with the new one as soon as you can.

NOW INCLUDED!

EXPANDED HEAVY TRUCK SECTIONS

Freightliner, International, Kenworth, Mack, Peterbilt, Volvo, Hino, Western Star, White, and others.



New General Motors OE Remotes Released from STRATTEC

STRATTEC has released 26 new remote fobs and four new emergency keys for GM vehicles, along with the GM Proximity and Emergency Keys brochure and the 2023 Key and Fob Identification Chart.

BY JEFF BAKER

STRATTEC expects to unveil several products and services for automotive locksmiths over the next several months. Here's a look at the company's lineup as of this publication.

STRATTEC recently released 26 new remote fobs along with four new emergency keys for General Motors. These are listed in a new GM Proximity and Emergency Key brochure earlier in the year. The brochure can be found on their website: www.aftermarket.strattec.com under current literature.

The release of new General Motors remote fobs and emergency keys are compatible with Buick, GMC, Chevrolet and Cadillac and cover models years 2015-2022.



GM Proximity and Emergency Key brochure

Onboard-programming instructions for these makes and models will be on STRATTEC's aftermarket website.

STRATTEC also released their 2023 Key and Fob Identification chart, which can be found on their website as well, under current literature. The chart gives a brief overview of their products covering Ford, Lincoln, Mercury, General Motors, Chrysler, Dodge, Jeep, Toyota, Acura, Honda, Nissan, Infiniti, Mazda, Mitsubishi, BMW, Volkswagen, Subaru, Hyundai and more.

To download the guides, for more information or to check out STRATTEC's vehicle match to determine appropriate products depending on the make and model of vehicle, go to <https://aftermarket.strattec.com>.

Jeff Baker is distributor sales manager for STRATTEC Security Corp.



Featured Remote 4: Cadillac 5-Button Proximity Fob, Part # 5942706



Featured Remote 1: Buick Logo 5-Button Proximity Fob, Part # 5944126



Featured Remote 3: Chevy Logo 5-Button Proximity Fob, Part # 5944130



Featured Remote 2: GMC Logo 5-Button Proximity Fob, Part # 5944135

AUTEL MAXIIM

UNIVERSAL IKEY

AFFORDABLE PROGRAMMABLE OF QUALITY SMART KEYS

2-7 BUTTON MODEL CONFIGURATIONS



PREMIUM

STANDARD

RAZOR

130FT FREQUENCY TRANSMISSIONS

700+ VEHICLE KEY REPLACEMENT

- Compatible With Systems Using 315M/433M
- Supports Ultra-Long Range (40 m/130 ft) Frequency Transmission
- Superior, OE-Quality: Meets Or Exceeds Industry & Regulatory Standards
- Multiple Styles Available

PROGRAM IKEYS WITH AUTEL'S ADVANCED KEY IMMOBILIZERS

AUTEL MAXIIM KM100

- 60 Second Key Generation
- Guided Procedures
- Supporting 8 Key Series And 37 Models

AUTEL MAXIIM IMG08PROIIPKA

- Guided Procedures
- Read/Exact Pin Codes
- Wide (European) Vehicle Coverage

AUTEL MAXIIM IM508S

- Read/Exact Pin Codes
- XP400 Required For IKEY Programming

Autel key programming and IMMO products are designed for professional locksmiths and NASTF-registered Vehicle Security Professionals. Please consult the licensing requirements of your local municipality before purchasing Autel's key programming and immobilizer tools.

Request Information: www.locksmithledger.com/21091903

WEB: AUTEL.COM | SUPPORT: 1.855.288.3587
EMAIL: USSUPPORT@AUTEL.COM

FOLLOW US @AUTELTOOLS
f t o YouTube



AUTEL®



BMW programming to be taught at AKS Locksmith Academy

Automotive Training Guide

Education is key in this high-tech field

Automotive locksmithing has entered a new, high-tech era. No longer are locksmiths making a living by purchasing a few basic tools, unlocking cars and duplicating keys. In today's world of sophisticated electronics and pricey equipment, locksmiths need specialized training. Here are some options in the coming months. Please note that pre-registration (and often pre-payment) are required.

These are not the only options. Check with your local distributor and the manufacturers of your equipment for additional opportunities. Watch for class schedules to be released for both the 2023 ALOA Expo (Aug. 6-12 in Orlando) and the new ALOA International Association for Automotive

Locksmiths Expo (Sept. 14-16 in Kansas City, Mo.)

May 5-6: American Key Supply Locksmith University – Advanced IM608, G2 Turbo and VVDI Key Tool Training, Las Vegas.

Learn advanced concepts and hands-on training using tools such as the

AutoProPAD G2 and G2 Turbo by XTool, IM608 Pro by Autel, Code Cannibal by OBD Star, AVDI by Abrites, and VVDI Key Tool by Xhorse. Some of the subjects being covered include:

- Who uses what tools for what



Autel IM608, included in AKS Locksmith Academy training

- In-depth coverage of the various functions of the tools
 - Programming of important and problematic vehicles
 - Hands-on programming of on-site vehicles
 - Importance of use of the VVDI Key Tool Max or Mini
 - Importance of pre & post-scans
 - EEPROM adapters
 - Thorough Q&A with the instructors
- More info: www.americankey-supply.com

June 1: AKS Locksmith University: Hands-On Lishi Training, Las Vegas

This three-hour course provides comprehensive, hands-on training on picking and decoding vehicle locks with Lishi Original locksmith tools. Students learn the tools and procedures that will help them pick and decode both automotive and residential locks. The class will begin with approximately an hour of classroom learning, understanding the basics of the tools and the locks that you will see in the field. We then jump into the hands-on portion of the class where students will be able to pick and decode as many locks as possible. This class will also cover residential Lishi tools also, as well as the new Kwikset SmartKey Decoder by LockTech.

Additional dates are June 1, July 13, Oct. 5 and Oct. 19. More info: www.americankeysupply.com

June 21-23: Southern Lock & Supply Learning Expo, St. Petersburg, Fla.

This distributor-sponsored training show and expo includes three days of classes. Automotive sessions (billed as the Southern Locksmith Institute) will include:

Hands-On Lishi Training and Picking: Comprehensive, hands-on training on picking and decoding vehicle locks with LISHI Original locksmith tools. Learn and understand the tools and

procedures that will help you pick and decode both automotive and residential locks with LISHI 2-in-1 Picks/Decoders. The class will begin with classroom learning, understanding the basics of the tools, and the types locks you will encounter in the field. In the hands-on portion of the class, you will be able to pick and decode as many locks as possible! Get focused attention and help from our ALOA certified instructor and conquer those troublesome locks.

Hands-On Automotive Key Programming: Get hands-on training with automotive tools such as the Auto-ProPAD G2 and G2 Turbo by XTool and IM608 Pro by Autel. Covered subjects include:

- Who has what tools and what they are or aren't using them for
- In-depth coverage of the various functions of the tools
- Programming of important and problematic vehicles
- Hands-on programming of on-site vehicles



Southern Lock tradeshow booklet

- Importance of the VVDI Key Tool Max or Mini
- Importance of pre & post-scans
- EEPROM adapters

Land Rover and Jaguar Key Programming: Learn how to program Land Rover and Jaguar keys from start to finish. This in-depth, hands-on



Volkswagen interior. : AKS Locksmith University to offer BMW and VW Key Programming July 14-15



Learn to service Range Rovers at the Southern Lock show

course will cover the entire process including basic module EEPROMing, soldering and handling protocols. Don't turn down calls for Land Rovers and Jags; instead, expand your skills and maximize your profits.

BMW Key Programming with

ACDP: Everything you need to know about making keys to BMW vehicles with ACDP. Other tools to be covered: Abrites, VVDI2, Autohex, and more. Basic module EEPROMing, soldering and handling protocols will be discussed, which is useful if other tools are used. Opportunities for hands-on

with BMW modules or vehicles, weather permitting.

Automotive Transponders Explained: Join ALOA-certified instructor Scott Childress as he demystifies the world of automotive transponders. In this course, you'll get a deep dive into the different types of transponder chips on the market, learn which chips works with which remotes, and also learn how to write them, reuse them, and more.

Advanced Diagnostics/Kaba Ilco Update: If you are new to the industry or simply looking for a better way

to offer key programming services, this four-hour, hands-on course is a must. Learn the latest capabilities on Smart Pro vehicle key programmer and its worldwide leading software development, as well as other industry leading solutions, including the RW5 cloud-based cloner and industry trends. Ilco will also conduct prize drawings throughout the class.

The location is the Hyatt Place St. Pete downtown.

More info: www.southernlock.com/resources/slsc-trade-show

July 14-15: AKS Locksmith University BMW and VW Key Programming, Las Vegas.

Day 1: Everything you need to know about safely making keys to BMW vehicles with ACDP. Other tools will be discussed such as Abrites, VVDI2, Autohex, etc. Basic module EEPROMing, soldering and handling protocols will be discussed which is useful if other tools are used. There will be hands-on with BMW modules and probably a vehicle or two. The class covers all aspects of BMW key programming for CAS 1/2/3/4 and FEM/BDC platforms for E and F body BMW cars.

Day 2: This class will teach you how to program ALL immobilizer systems for VW and Audi, including, but not limited to, IMMO 1, 2, 3 and MQB-based vehicles. That includes the UDS and Micronis systems. This will cover mid-90's through 2016 (and a little later, depending on the model). Key generation will be discussed, as well as how to pick and decode with Lishi Original tools.

Aug 26: PureAUTO -Key Generation. Lockmasters, Nicholasville, Ky.

This course offers the student an exciting opportunity to learn the skills needed to generate an automotive key. This extended hands-on portion of the class includes a wide variety of tools that will enable the student to



Advanced Diagnostics Smart Pro

experience success and gain confidence. Learn to sight-read keys, use scopes to read wafers, impression, use of Determinators, Kobra readers, AccuReaders, Lishi 2-in-1 tools, progression, keys by code and more. This course is recommended for the locksmith who wishes to expand into automotive locksmithing, or learn how to better exploit their key generation skills.

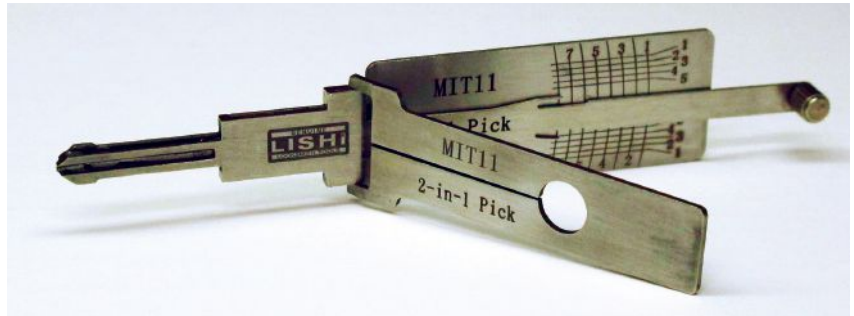
Additional dates are Oct. 6-7

To register, call 866-574-8724. More info: www.lsieducation.com

Aug. 27: PureAUTO – Advanced Automotive Transponders.

Lockmasters, Nicholasville, Ky.

Keep up with the ever-changing world of transponders. This class covers



The MIT11 Lishi 2-in-1 tool for Mitsubishi vehicles.

transponder systems made since 1996, programming procedures, key blanks, and tools for most transponder-equipped vehicles in North America. This will include the newest procedures and key blanks for the newest models. Learn about the CAN Systems and new PROX systems as well as laptop-based

programming options for some vehicles. Includes information on programming and troubleshooting: GM, Ford, Chrysler, Honda, Toyota, Mazda, Nissan, Mitsubishi, and VW/Audi.

Additional dates are Oct. 6-7

To register, call 866-574-8724. More info: www.lsieducation.com

KEYS, REMOTES, PROGRAMMERS, OH MY! LET OUR EXPERTISE MAKE YOUR LIFE EASIER

INDUSTRY EXPERIENCE
800 YEARS

QUALITY PRODUCTS
NSP

HELPING YOU GROW

GSA CONTRACT HOLDER

ELECTRONIC ACCESS SPECIALISTS
EAS

Shop online any time, anywhere at [SouthernLock.com!](http://SouthernLock.com)

Southern Lock & EAS
Electronic Access Specialists

www.SouthernLock.com 727-541-5536 [f /SOLOCK](https://www.facebook.com/SOLOCK) [@southernlockfla](https://twitter.com/southernlockfla)

Request Information: www.locksmithledger.com/10174614

Test-Driving the Börkey Rexa 5 Key Duplicator

BY HERMAN MANZANARES III, RL

Börkey has been manufacturing products since 1851 and the company has a reputation of making one of the best key machines money can buy. My business has an HPC/Silca Locksmith #1 Key Machine in addition to a Börkey 954-3 for standard duplication so the Börkey Rexa 5, which was released in January 2022, has been a wonderful addition to my lineup. Börkey products are sold in North America by MBA USA.

The Börkey Rexa 5 features several upgrades over the 954-3, most notably the easy calibration features. The Börkey Rexa 5 has a LED indicator light that engages when the depth adjustment button is pressed. The LED indicator and associated depth adjustment spindle make precise calibration of keys a breeze compared to the 954-3 which requires manual depth adjustment via the provided hex key. Other features the Börkey Rexa 5 has are a removable debris tray, a built-in LED flex lamp, and a built-in plastic brush for easy buffing of completed keys.

There are a few features of the 954-3 machine I wish the Börkey Rexa 5 had kept in place such as the cartridge release toggle which was replaced by a single-hand flipper release and can make for difficult placement of the cutting cartridge back to a stationary position. Another feature of the 954-3 I wish Börkey had kept for the Rexa 5 is the power supply required to run the machine.

The Börkey 954-3 runs on a standard 110V without an additional power supply required, which is the case with the Rexa 5 Machine. A suitable power supply is included with the purchase of the Rexa 5. However, the issue I had with powering the machine was not covered in the Börkey manual or the power supply manual.

After a series of phone calls with MBA USA, the solution turned out to be a simple flip of a



Photo 1. The Börkey Rexa 5 has a LED indicator light that engages when the depth adjustment button is pressed.



Photo 2. The Börkey Rexa 5 has a LED indicator light that engages when the depth adjustment button is pressed.

AUTOMOTIVE LOCKSMITHS



WHAT MY FRIENDS THINK I DO...

... **WHAT I REALLY DO**



WE HAVE THE
KEYS, TOOLS &
PROGRAMMERS

FOR THOSE

REAL

**AUTOMOTIVE
LOCKSMITHS!**

GOT QUESTIONS? CALL US!

1-800-878-6604

3301 N 29TH AVE, HOLLYWOOD, FL 33020

SALES@UHS-HARDWARE.COM

   UHSHARDWARE

UHS-HARDWARE.COM

UHS
HARDWARE

#1 SOURCE FOR AUTOMOTIVE LOCKSMITH SUPPLIES
ABSOLUTE LOWEST PRICES IN THE USA - GUARANTEED!
100,000'S OF KEYS IN STOCK FOR SAME DAY SHIPPING
EVERY TOP-NAME MACHINE, PROGRAMMER & TOOL
OFFICIAL XHORSE DISTRIBUTOR AND SERVICE CENTER
OVER 700 HOW-TO VIDEOS ON OUR YOUTUBE CHANNEL

 **YouTube**

PLUS

THE FUNNEST
COMMERCIALS
IN THE INDUSTRY





Photo 3. Built-in plastic brush for easy buffing of completed keys



Photo 5. Check the voltage selector setting switch on the back of the power supply



Photo 4. Power supply



Photo 6. Voltage switched to 110V

switch. The Borekey Rexa 5 comes standard with a 220V plug and the power supply and included adapter allow for the supply to plug into a standard USA outlet. However, the voltage converter on the rear of the power supply unit was set at 220V, causing the machine to malfunction when the power button was pressed. Once the voltage converter was switched to 110V, the Rexa 5 worked like a charm.

The last feature I hope makes it into a potential Rexa 6 machine in the future is the ability to press the brush button while the key cartridge is stationary and have the brush feature stay on. Currently, the brush will run while

the key cartridge is upright toward the cutter wheel. However, to activate the brush while the key cartridge is stationary, the brush button must be held in while the brush is utilized.

Overall, the Borekey Rexa 5 is a tremendous upgrade for a standard duplicator and handled its first challenge of duplicating a broken key with a five-star effort.

Herman Manzanares III, RL, is co-owner of Los Alamos Lock & Key in Los Alamos, New, Mexico. He can be reached via the web at www.losalamoslock.com.

Key Machine Encyclopedia, Automotive Edition

Do your research before investing in this essential equipment.

Key machines are an obvious and essential locksmithing tool and a major investment. Shopping for one can be an overwhelming experience, particularly when you consider that around 100 models of key machine are on the market. The first important thing to do when you shop for a key machine is to determine ahead of time what keys you'll cut and in what amounts. It makes no sense, for example, to consider a key machine that cuts only edge-cut keys if you're an automotive locksmith, because most vehicles these days require a laser cutter — if they even require a key at all.

Here are some of the current models available for the automotive market, listed alphabetically by manufacturer (though most have functionalities that go beyond automotive).

Next, you have to do your research. When Locksmith Ledger introduced its Key Machine Encyclopedia, it was with the hope that it would serve as a research aid and be updated annually. See the full version at www.locksmithledger.com/21288375.

AMERICAN KEY SUPPLY BLACK WIDOW V2

The computerized Black Widow V2 from American Key Supply can originate or duplicate edge (automotive and residential/commercial), laser, dimple, Tibbe and tubular keys. It has native 12-volt power and a carry handle. The V2 is an updated and complete version of its predecessor models.

More info: www.americankeysupply.com



American Key Supply Black Widow 2



Framon FRA2001

FRAMON FRA-2001

The FRA-2001 is a computer-driven automatic code machine that uses Genericode software to originate edge keys for automotive or cylinder locks as well as padlocks. It can cut by code number, or you can search by manufacturer.

The manual Edge#2 can originate edge (automotive and residential), bit (padlock and safe-deposit box), high-security and Tibbe keys from code. It includes the latest version of Genericode.

The DC-300 can originate from code or duplicate automotive edge keys, including motorcycle keys. An

additional carbide cutter will allow it to cut steel keys.

The Sidewinder 2 can originate or duplicate laser keys, including Volkswagen and Audi. Depth and space rods allow for a quick change between code cutting and duplication.

HPC TIGER SHARK2

The Tiger SHARK2 can originate or duplicate edge (automotive and residential/commercial), laser, dimple, Tibbe, tubular and high-security Medeco keys, including Medeco 4. It



HPC TigerShark2



has decoding capability and a clamp that allows for engraving.

The QuickSilver can originate or duplicate edge (automotive and residential/commercial) keys. It has a built-in code database but can connect with a computer for more codes.

The AutoMate can duplicate edge (automotive and residential/commercial) keys, as well as small furniture keys. An optional carbide cutter is available for harder key blanks.

More info: www.hpcworld.com



Keyline Messenger

KEYLINEUSA MESSENGER

The computerized Messenger can originate or duplicate automotive edge, laser, dimple and high-security keys. It has a 36-volt rechargeable battery and a carry handle, and it's operated through an app for Google Android devices. (Apple support expected.)

The Gymkana 994 can code-cut or duplicate edge (automotive and residential/commercial), laser and Tibbe keys. A new optional clamp allows it to cut new Honda and Acura keys.

The Ninja Total can originate or duplicate edge (automotive and residential/commercial), laser, dimple, Tibbe and tubular keys. It has decoding capability, and an engraving clamp is available.

More info: keyline-usa.com



Trition Plus Automotive Edition

LOCK LABS TRITON PLUS AUTOMOTIVE

The computerized Triton PLUS Automotive can originate or duplicate automotive edge, laser, dimple and Tibbe keys. It's controlled by a 7-inch touchscreen display and allows for engraving. It can be expanded through additional jaws.

The computerized Triton PLUS Ultimate can originate or duplicate edge (automotive and residential/commercial), laser, dimple, Tibbe, tubular and Xhorse/KeyDIY flip keys. It's controlled by a 7-inch touchscreen display and allows for engraving. It's an updated version of the original model.

More info: tritonkeymachine.com

SILCA POKER PRO

The Poker Pro can duplicate edge (automotive and residential/commercial) and cruciform keys. It has decoding capability and two-button operation.

The Futura Auto can originate or duplicate automotive edge, laser, dimple,



Silca Poker Pro

Tibbe and tubular keys, including those for heavy trucks and motorcycles. It has decoding capability and a 10-inch tablet for operating the machine.

More info: www.ilco.us

XHORSE DOLPHIN II XP-005

The DOLPHIN II XP-005L can originate or duplicate edge (automotive and residential/commercial), laser, dimple, Tibbe and cruciform keys. It's battery-powered and includes a handle for remote key cutting. It can operate via an app or a 5-inch touchscreen display.



XHorse DOLPHIN II XP-005

The CONDOR XC-MINI PLUS II can originate or duplicate edge (automotive and residential/commercial), laser, dimple, Tibbe and cruciform keys. It also can engrave. It has decoding capability and can operate via an app or a 7-inch touchscreen display.

More info: www.americankeysupply.com, www.uhs-hardware.com

NO LONGER IN PRODUCTION

Meanwhile, the following models no longer are in production. Models still might be available for purchase via distribution:

- American Key Supply Black Widow Auto, Black Widow Complete
- JMA X-Code, Ecco
- Keyline 994 Laser, Ninja, Ninja Laser, Easy Quattro
- Kukai SEC-M10
- Lock Labs Triton
- Silca Unocode Pro
- Xhorse CONDOR XC-009



Transponder

Island



**#1 AUTOMOTIVE
LOCKSMITH SUPPLIER**

WWW.TRANSPONDERISLAND.COM



KEYS



PROGRAMMERS



SUPPORT

 1-866-757-7778



www.transponderisland.com

@ sales@transponderisland.com

Request Information: www.locksmithledger.com/1138396

NEW



LOYALTY PROGRAM



Purchase our
Look-Alike®
Remotes...

... And Get UTP Credits
Towards Your Smart Pro!

HOW IT WORKS



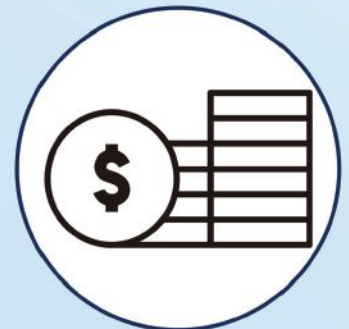
JOIN

Download MYKEYS Pro
and register.
It's Free & Easy!



SCAN & EARN

Scan the QR code on your
Ilco Look-Alike Remotes
bags using the Loyalty
Program section inside
MYKEYS Pro.



REDEEM

Redeem your credits
towards the purchase of
an Advanced Diagnostics
Unlimited Token Plan.

Request Information: www.locksmithledger.com/10172820

Contact Your Local Distributor for Details